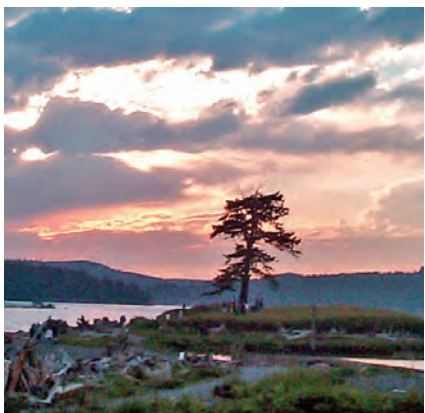




Swinomish Climate Change Initiative Impact Assessment Technical Report



**Swinomish
Indian
Tribal
Community**

Office of Planning
and Community
Development

La Conner, WA 98257

October 2009

Swinomish Climate Change Initiative Impact Assessment Technical Report

CONTENTS

| | |
|---|-----------|
| ACKNOWLEDGEMENTS | IV |
| LIST OF FIGURES | V |
| LIST OF TABLES | V |
| 1 EXECUTIVE SUMMARY | 1 |
| Key Findings | 1 |
| Report Disposition..... | 4 |
| 2 KEY TERMS..... | 5 |
| 3 BACKGROUND | 8 |
| 3.1 General Characteristics and History..... | 8 |
| 3.2 Genesis of the Project | 11 |
| 3.3 Broader context of Indigenous peoples and climate change..... | 11 |
| 3.4 Project Participants..... | 12 |
| 4 ASSESSMENT PROCESS..... | 14 |
| 4.1 Data, Metadata, and Tools | 14 |
| 4.2 Assessment Methodology | 15 |
| 4.2.1 Initial Impact Identification..... | 15 |
| 4.2.2 Vulnerability Assessment..... | 16 |
| 4.2.3 Risk Analysis..... | 16 |
| 5 IMPACT ASSESSMENT | 17 |
| 5.1 Summary of General Climate Change Impacts..... | 17 |
| 5.1.1 General climate change effects..... | 17 |
| 5.1.2 General Impacts | 17 |

| | | |
|------------|--|-----------|
| 5.1.3 | Impact Assessment Matrix..... | 18 |
| 5.1.4 | Impact Assessment Tables | 20 |
| 5.1.5 | Impacts on Specific Reservation Subareas..... | 27 |
| a. | Padilla Bay and North End of the Reservation. | 28 |
| b. | Swinomish Village and Swinomish Channel..... | 28 |
| c. | Shelter Bay | 29 |
| d. | McGlenn Island | 29 |
| e. | Snee-Oosh to Kiket..... | 30 |
| f. | Turner’s Bay | 31 |
| 5.2 | Natural Systems | 31 |
| 5.2.1 | Shorelines and Beaches | 31 |
| 5.2.2 | Tidelands and Marine Habitat..... | 32 |
| a. | Habitat Viability and Migration..... | 32 |
| b. | Estuarine Beaches | 33 |
| 5.2.3 | Fish and Wildlife..... | 33 |
| a. | Salmon | 33 |
| b. | Forage Fish | 34 |
| c. | Shellfish | 34 |
| d. | Shorebirds | 34 |
| e. | Waterfowl | 35 |
| f. | Upland Wildlife | 36 |
| 5.2.4 | Water Resources | 36 |
| a. | Freshwater | 36 |
| b. | Groundwater..... | 37 |
| c. | Wetlands | 37 |
| 5.2.5 | Forest Resources | 38 |
| a. | Urban/Forest Interface | 38 |
| b. | Forest Species | 39 |
| c. | Forest Insects and Diseases | 39 |
| 5.2.6 | Air Quality | 40 |
| 5.3 | Human Systems | 41 |
| 5.3.1 | Land Uses | 41 |
| a. | Housing/Residential Development | 41 |
| b. | Commercial/Non-Residential Development..... | 42 |
| c. | Stormwater Management..... | 43 |
| d. | Hazardous Sites | 43 |
| e. | Agriculture | 44 |
| f. | Recreation | 44 |
| 5.3.2 | Cultural Resources and Traditions | 45 |
| 5.3.3 | Public/Private Utilities | 46 |
| a. | Water | 46 |
| b. | Wastewater..... | 47 |
| c. | Communications | 47 |
| d. | Energy and Power | 47 |
| e. | Waste Management | 48 |
| 5.3.4 | Emergency Services | 48 |
| a. | Police..... | 48 |
| b. | Fire | 49 |
| c. | Other Emergency Response..... | 49 |
| 5.3.5 | Human Health | 49 |
| a. | Respiratory diseases | 50 |

| | | |
|------------|---|-----------|
| b. | Heat-related illnesses..... | 50 |
| c. | Drowning..... | 50 |
| d. | Vector-borne diseases | 51 |
| e. | Enteric diseases..... | 51 |
| f. | Other emerging infectious diseases..... | 52 |
| g. | Diseases associated with shellfish and fin fish..... | 52 |
| h. | Other food-related issues | 53 |
| i. | Increased ultraviolet (UV) radiation..... | 53 |
| j. | Children’s health | 53 |
| 5.3.6 | Transportation | 53 |
| a. | Road System Integrity | 55 |
| b. | Access and Circulation | 55 |
| c. | Bridges | 56 |
| d. | Public Transit..... | 57 |
| e. | Marine/Port Facilities..... | 57 |
| 6. | VULNERABILITY ASSESSMENT | 58 |
| 6.1 | Inundation Risk Zones | 66 |
| 6.2 | Economic Development and Agricultural Lands | 70 |
| 6.3 | Infrastructure Vulnerabilities and Critical Off-Reservation Issues | 70 |
| 6.4 | Wildfire Risk Zone | 71 |
| 6.5 | On-Reservation Fishing and Shellfish Harvest | 74 |
| 6.6 | Potential Erosion Areas | 74 |
| 7. | RISK ANALYSIS..... | 76 |
| 8. | CONCLUSIONS..... | 83 |
| 9. | REFERENCES | 84 |

APPENDICES

| | |
|------------|--|
| Appendix 1 | Swinomish Climate Change Proclamation |
| Appendix 2 | Climate Change Impacts in the Pacific Northwest: Implications for the Swinomish Indian Reservation |
| Appendix 3 | Tidal Datums, Benchmarks, and Metadata |
| Appendix 4 | Water Quality Sampling Data, Tribal Canoe Journey |
| Appendix 5 | Critical Facilities, Swinomish Indian Reservation |
| Appendix 6 | Inundation Risk Zones, Swinomish Reservation Subareas |

Acknowledgements

Support for the Swinomish Climate Change Initiative was provided through a grant from the U.S. Department of Health & Human Services, Administration for Native Americans (ANA), which provided 80% of project funding.

Many people participated in technical assessment activities for this project and/or contributed to the preparation of this report. In performance of technical work for the project and preparation of this report, the Swinomish Indian Tribal Community would like to acknowledge contributions of the following individuals:

University of Washington, Center for Science in the Earth System, Climate Impacts Group:

Dr. Nathan Mantua, Co-Director and Associate Professor (overseeing science consultant)
Lara Whitely Binder, Outreach Specialist (advising science consultant)
Ingrid Tohver, Research Scientist (advising science consultant)

Swinomish Indian Tribal Community:

Ed Knight, AICP, Senior Planner (Project Coordinator)
Tara Tisdale, Associate Planner
Scott Andrews, Environmental Management Coordinator
Jeroldine Hallberg, Technical Writer
Eric Haskins, GIS Specialist

Special thanks also to the following individuals for their additional contributions and/or review:

Swinomish Indian Tribal Community:

Charles O'Hara, Planning Director
Elissa Fjellman, GIS Coordinator
Larry Campbell, Tribal Historic Preservation Officer
Shelly Vendiola, Communications/Outreach Facilitator
Todd Mitchell, Water Resources Coordinator
Jamie Donatuto, Environmental Specialist
Tiffany Hoyopatubbi, Water Resources Specialist
Sarah Akin, Water Resources Specialist
Debra Lekanof, Grants Coordinator
Office of Tribal Attorney

Skagit River System Cooperative:

Greg Hood, Scientist

Swinomish Utility Authority:

John Petrich, Director

This report is also available on the Swinomish Climate Change web site:

http://www.swinomish.org/departments/planning/climate_change/climate_main.html

List of Figures

3-1 Swinomish Indian Reservation location/vicinity..... 9

3-2 Swinomish Indian Reservation Land Status..... 10

3-3 Low-Lying Areas Within Swinomish Indian Reservation..... 13

5-1 Reservation Study Subareas..... 27

5-2 General Marine Habitat Types..... 33

5-3 Sensitive Resources and Habitat Within Swinomish Indian Reservation..... 36

5-4 Roads and Bridges in Swinomish Reservation Vicinity..... 55

6-1 Inundation Risk Zones, Swinomish Reservation Vicinity..... 68

6-2 Residential Structures/Properties Within Inundation Risk Zones..... 69

6-3 Non-Residential Structures/Properties Within Inundation Risk Zones..... 70

6-4 Residential Structures/Properties Within Primary Wildfire Risk Zone..... 73

6-5 Non-Residential Structures/Properties Within Primary Wildfire Risk Zone..... 74

6-6 Potential Shoreline Erosion Areas..... 76

List of Tables

5-1 Impact Assessment Matrix..... 19

5-2 Impact Assessment Table, Human/Built Systems..... 21

5-3 Impact Assessment Table, Natural Systems..... 25

6-1 Vulnerability Assessment by Sector..... 60

6-2 Structures and Lots Within Inundation Risk Zones..... 69

6-3 Non-Residential Facilities Within Inundation Risk Zones..... 70

6-4 Properties Within Primary Wildfire Risk Zones..... 73

6-5 Non-Residential Facilities Within Primary Wildfire Risk Zones..... 74

7-1 Risk Analysis by Sector..... 78

8-1 Sample Vulnerability/Risk Matrix..... 84

1 EXECUTIVE SUMMARY

In recognition of a growing body of scientific evidence, and in response to certain specific local events, the Swinomish Indian Senate issued a proclamation in 2007 directing action to study the possible effects of climate change on the Swinomish Indian Reservation community, lands, and resources and determine appropriate responses.¹ Following this proclamation, the Tribe initiated a two-year project in late 2008 to assess how climate change may affect the Swinomish Indian Reservation and to develop strategies to address potential impacts.

The outcome of this project is the production of three key reports: this *Impact Assessment Technical Report*, a preliminary Adaptation Strategy Report, and a Community Action Plan with recommendations for future adaptation options and strategies. This technical report comprises the first milestone of the project. It represents the work of a multidisciplinary team led by staff of the Swinomish Office of Planning & Community Development, in partnership with the University of Washington Climate Impacts Group (CIG), and with further scientific assistance from Skagit River System Cooperative (SRSC). The report describes the scientific data and potential climate change scenarios, assesses possible local impacts, and identifies specific areas of potential risk and vulnerability to climate change effects.

Key Findings

The fourth assessment of climate change released in 2007 by the Intergovernmental Panel on Climate Change (IPCC) represents a consensus among scientists worldwide that rising greenhouse gas concentrations are unequivocally attributable to human activities. In an effort to understand the response of climate to increased greenhouse gas emissions in the future, the IPCC coordinated global climate change modeling experiments carried out by the international research community under various emissions scenarios. The models under all scenarios point to a warmer future climate, with the rate of warming correlated to the rate of greenhouse gas emissions.² The key to preparing for the potential impacts of climate change is to understand the extent of possible effects on our regional biological, physical and human systems under future scenarios of varying ranges. To assess the range of impacts and the potential risks posed to human and natural systems, this report considers several regional climate change scenarios, from low to high impacts, to accommodate the inherent uncertainty in the climate change models and future greenhouse gas emissions scenarios. This approach is consistent with similar analyses and efforts by other governmental entities, such as King County, Washington, and the California Coastal Commission.

Based on assessment of current documented models and scenarios, the principal areas and resources within the Swinomish Indian Reservation vulnerable to climate change impacts are shorelines, beaches, low-lying terrain, and forests, along with the assets within those areas. Impacts to some of these vulnerable areas are potentially high within 20-50 years, increasing

¹ See Appendix 1 for text of Proclamation.

² See Appendix 2 for more complete discussion of projected impacts.

through the end of the century and beyond.³ Other areas and resources may have moderate impacts during this timeframe. Significant among these potential impacts are the following:

- Over 1,100 acres of Swinomish Reservation lands, or approximately 15% of Reservation uplands, are potentially at risk of inundation from increasing sea level rise, including the only agricultural lands within the Reservation, the Tribe's primary economic development lands, and sensitive shoreline areas.
- Approximately 160 residential structures are potentially at risk of inundation from sea level rise and/or tidal surge, with a total estimated value of over \$83 million.
- Approximately 18 non-residential or commercial structures are potentially at risk of inundation from sea level rise and/or tidal surge, with a total estimated value of almost \$19 million.
- Approximately 2,218 acres of uplands and over 1,500 properties are in a high risk zone for potential wildfire based on projected increase in temperatures; total value of structures and properties within this zone is estimated to be more than \$518 million. Most other areas within the Reservation are at least at moderate risk of wildfire.
- Vital transportation links and access routes to the Reservation are at risk of inundation, with the potential to isolate the Reservation from the mainland during increasingly high tidal events.
- Beach seining sites and shellfish beds along the west shore of the Reservation, areas of traditional tribal harvest, are at significant risk of permanent inundation and potential loss. Important "keystone" species such as shellfish and salmon are at risk of higher levels of contamination from algal blooms and other diseases that may be exacerbated by increased temperature and other changes.
- The Reservation population as a whole, particularly those who are ill or elderly, are potentially at risk of a variety of heat-related illnesses during isolated or extended high heat episodes as average temperatures increase, and tribal members in particular may be at risk of increased incidence of respiratory ailments such as asthma from potential increase in synergistic impacts of pollutants.
- Sensitive cultural sites within low-lying areas may face permanent inundation, and traditional native species may be lost as they are forced to migrate or adapt to hotter, drier climatic conditions.

The risk of inundation of shorelines and low-lying areas is expected to increase over the long term with gradual sea level rise and projections of more frequent and intense storm/tidal surges. Global projections of sea level rise indicate a range from lower estimates of 18-59 cm (~1-1/2 to 2 feet) by the end of the century (IPCC, 2007) to higher estimates of up to 55-125 cm (~2 to 4+ feet) within the same timeframe (Rahmstorf, 2007; Pacific Institute, 2009). Regional estimates of sea level rise depend on the local effects of wind patterns, atmospheric pressure, and vertical land

³ As discussed in following sections, models and scenarios examined for this report, as well as assessments of impacts, generally rely upon projections through 2100; most analyses agree, however, that climate change and associated impacts are expected to continue for some period of centuries or longer. See report discussion and technical appendices for information on models and scenarios.

movement caused by tectonic activity. Considering these local conditions, Mote et al. (2008) estimates regional sea level rise for the Puget Sound to span from very low estimates of 16 cm (6") to very high estimates of 128 cm (50") by the end of the 21st century.

Structures, roads, utilities, and other assets within nearshore or low-lying areas will be increasingly impacted by sea level rise and tidal surge events to the extent that adaptation measures will not be available or able to forestall, protect against, or prevent such impacts.

Based on projections of potential sea level rise and tidal surge, risk zones were mapped for the Reservation, and an inventory of properties and improvements within these risk zones identified almost 200 properties potentially at risk, including residential structures and non-residential facilities.⁴ Any revenues generated from leasing or other commercial activity on these properties would also be at risk of loss. Low-lying agricultural and shellfish areas could ultimately be lost entirely, and primary economic development land could be significantly impacted. Certain impacts also carry potentially significant secondary consequences as well, such as inundated access routes causing isolation of the Reservation from the mainland, or inundation of low-lying development zones affecting or preventing implementation of critical economic development projects. Such secondary consequences have the potential to extend impacts to the entire Reservation population and stress the ability of Tribal and other governmental entities to respond.

Forested areas and resources are projected to experience different but equally significant impacts. Annual mean temperature is projected to increase in the northwest by up to 3-4°F by 2040 and perhaps as much as 7-8°F by the end of the century (DOE, 2006; CIG, 2009). Gradually increasing average and summer temperatures will decrease moisture content in soils and vegetation and increase the potential for devastating wildfire throughout forested areas of the Reservation, but with potentially greatest impact in the urban/forest interface.⁵ Other impacts on forest resources include increasing drought stress with rising temperatures, and an associated proliferation of drought-tolerant species such as fir and decline in drought-susceptible species such as western red cedar. Changes in the species composition of large trees could also be accompanied by a shift in understory species and ground vegetation, potentially resulting in the loss or migration of certain native plants. Additionally, higher temperatures are projected to create a more suitable environment for the spread of forest pests and diseases, such as bark beetles and various fungi that would previously have been suppressed by colder winters.

Other significant or notable impacts include effects on public health, marine resources, and cultural resources. Increasing temperatures are projected to impact human health in numerous ways; heat stress will have a variety of impacts on the general population, as already seen in some parts of the globe, and rising temperatures will create a more suitable environment for pathogens and their vectors that is not normally prevalent in a colder regime. Likewise, rising ocean acidity and shifts in tidal zones will put additional stress on near-shore marine resources such as shellfish and viable habitats. Cultural resources may be impacted both positively and negatively by tidal inundation. Gradual sea level rise will increasingly submerge nearshore or low-lying buried artifacts and sites, both protecting them and making investigation more difficult, while strong storm surges may uncover some sites or artifacts, rendering them vulnerable to weathering and tampering. Cultural use areas may be impacted by either inundation in near-shore or low-lying areas or by wildfire in forested areas, rendering them unusable in either case for some extended period of time.

⁴ See Section 6 for delineation of inundation zones.

⁵ See Section 6 for delineation of urban/forest interface zone.

Report Disposition

This report is intended to lay a solid foundation for assessment of appropriate response strategies, and the ultimate intent of this and following reports is to provide a well-documented path to actions taken based on such strategy recommendations. Concurrent with this report, an advisory group has been working toward a broad planning and policy framework for preparedness response strategies and an assessment of critical issues and impacted disciplines.

The ultimate goal is to develop an action plan for the future by combining the results of this technical report with the advisory group's recommendations. The action plan will include a range of strategy recommendations for adaptation to potential climate change impacts. It will also describe areas of recommended or necessary coordination with local jurisdictions where common interests exist between the Tribe and other jurisdictions, and it will examine capacity and funding requirements for implementation. The final report will be shared as a model to assist other tribal governments and jurisdictions in planning for adaptation. It is expected that this project will be but the first in a continuing and long term series of steps to determine how best to cope with and adapt to some of the most significant issues to face the Tribe in their long history. Final publication of the action plan is scheduled for September 2010.

2 Key Terms

Adaptation (climate change): Actions to respond to and/or counter the effects of climate change; relocation and armoring are examples of adaptation actions.

Adaptive Capacity: The ability of a system to accommodate or respond to changes in climate with minimum disruption or cost.

Armoring: Shoreline erosion control practices using hardened structures intended to stabilize the shore; examples include bulkheads, revetments, concrete walls, and rip-rap. Armoring inhibits natural processes, leading to conflict between protection of built structures and protection of the environment.

Climate Change: Changes in the Earth's physical systems that occur over long time periods (decades, centuries, or even millions of years) rather than over shorter periods such as for annual or seasonal changes; climate change may include changes in natural cycles of variability such as seasonal, annual, multi-year, and/or multi-decade patterns of variability. As used in the Tribal project, climate change refers to those changes resulting from increase in greenhouse gas concentrations and changes in aerosol emissions that are deemed to be caused by human activities. Examples of global effects of climate change include increase in average atmospheric and sea temperatures, general melting and decrease in snow and ice, increased drought conditions, and rising sea levels.

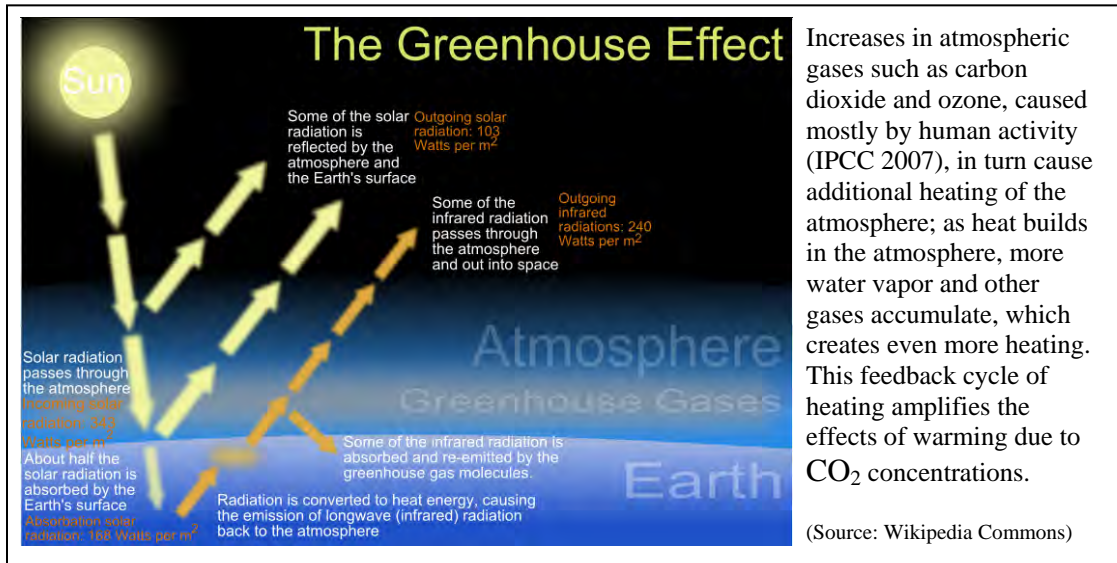
Datum: A mathematical model for describing and measuring elevation. Vertical datum describe upland elevation based on mathematical models of the earth's surface; tidal datum describe the range of tidal influence between low and high water based on analysis of historical data.

Estuary/estuarine: An estuary is a body of water formed where freshwater from rivers and streams flows into the ocean, mixing with the seawater. Estuaries and the lands surrounding them are places of transition from land to sea, and from freshwater to saltwater. Although influenced by the tides, estuaries are protected from the full force of ocean waves, winds, and storms by the reefs, barrier islands, or fingers of land, mud, or sand that surround them. *The entire Puget Sound is an estuary*, made up of a series of underwater valleys and ridges fed by more than 10,000 streams and rivers. The average depth is 450 feet. Puget Sound is surrounded by an array of beaches, bluffs, deltas, mudflats and wetlands teeming with plants, fish, birds and wildlife. (EPA National Estuary Program)

Fetch: The distance which the effect of seas (such as wind) can travel unobstructed by land before reaching the observer.

GIS: Geographic Information System, a means of location, mapping, and analysis of spatial data, such as for natural, environmental, and built features.

Greenhouse gas (GHG): Gases that trap heat within the Earth's atmosphere by absorbing and emitting infrared radiation; such gases include carbon dioxide, methane, nitrous oxide, ozone, and water vapor.



Heat exhaustion: a condition that occurs when the body is producing or absorbing heat faster than heat can be dissipated, usually caused by prolonged exposure to high temperatures. Symptoms of heat exhaustion include headache, dizziness, dehydration, fainting, nausea, and lower blood pressure. Heat exhaustion can be a precursor to more severe hyperthermia (heat stroke), cardiac arrest, and other conditions.

Heat stroke: a severe condition, usually caused by prolonged exposure to heat, requiring immediate medical attention. Symptoms are typically more acute forms of those for heat exhaustion, with additional possibility of unconsciousness, cardiac arrest, convulsions, vomiting, and blindness.

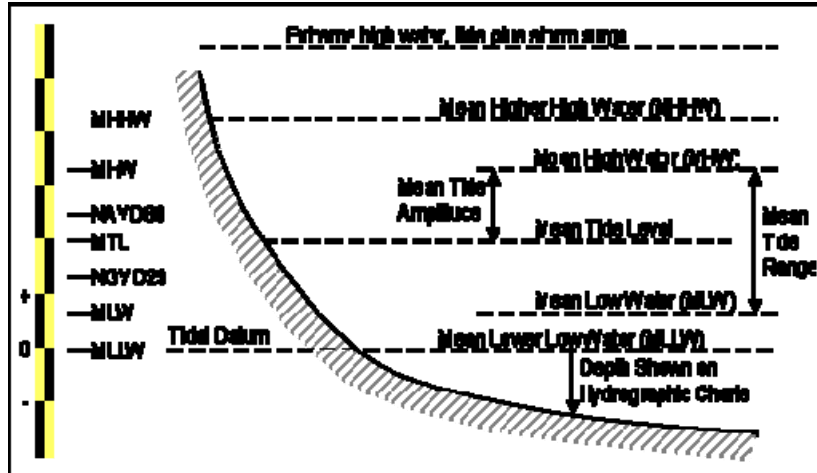
IPCC: International Panel on Climate Change, the assembly of scientists from around the world commissioned through the United Nations to study and report on the causes and impacts of global warming and climate change.

LiDAR (Light Detection and Ranging): a remote sensing tool that projects a laser pulse (usually attached to an airplane or helicopter) to measure distance and gather topographic data.

Mean Higher High Water (MHHW): The average of the higher high water height of each tidal day during a tidal epoch (19 years).⁶

Mean Lower Low Water (MLLW): The average of the lower low water height of each tidal day during a tidal epoch (19 years).⁶

⁶Some locations have diurnal tides, or one high tide and one low tide per day. Most locations are characterized by semidiurnal tides, in which the tide cycles through a high and low twice each day, with one of the two high tides being higher than the other and one of the two low tides being lower than the other. These more extreme tides are used to measure MHHW and MLLW. (NOAA)



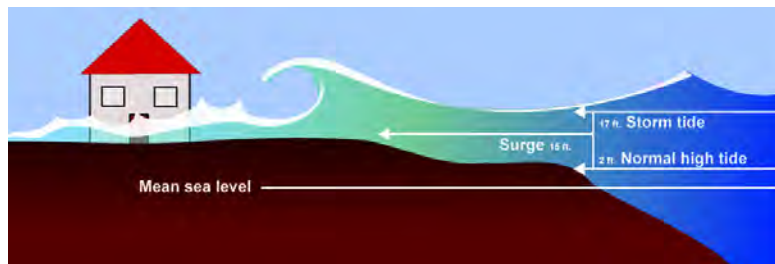
Generic Relation of Tidal Datums and Water Level Measurement
 (Source: http://www.fhwa.dot.gov/engineering/hydraulics/images/h25_61.gif)

Mitigation (climate change): Actions to reduce the causes of climate change; emission reduction and energy efficiency programs are examples of mitigation actions.

Sector: Any policy area, planning discipline, management focus, resource, human system, or natural system that may be a subject of study.

Sensitivity (climate change): The degree to which a system is affected by changes in climate conditions.

Surge: An offshore rise of water associated with a low pressure weather system, caused by high winds pushing the surface of the water



Sustainability: The ability of a system to meet its needs on a continuing basis without harm to the environment and without compromising the ability of systems to do so in the future. In tribal traditions, the concept of “seven generation sustainability” is the idea that decisions should be considered for their impact on the seventh generation to come.

Vulnerability (climate change): Measurement of the level of impact on a system from the effects of climate change; vulnerability is an assessment of the consequences of climate changes, as a function of the sensitivity of a system to climate changes and the adaptive capacity of the system to respond to such changes.

3 Background

3.1 General Characteristics and History

The Swinomish Indian Reservation is located on the southeastern peninsula of Fidalgo Island, west of the Swinomish Channel and adjacent to low-lying mainland areas to the east (Figure 3-1). The Reservation regulatory boundary encompasses approximately 7,450 upland acres and approximately 2,900 acres of tidelands for a total of 10,350 acres. Roughly 4,700 acres is forested uplands with surrounding and interspersed urban and rural development. Approximately 7,675 acres are held by the Tribe or Tribal members, with the remaining 2,675 acres held in private non-tribal ownership (Figure 3-2). Tribal headquarters are located in the historic Swinomish Village in the southeast portion of the peninsula, across the channel from the Town of La Conner. Tribal enterprises, including a casino, gas station, and RV park, are located on the north end of the Reservation, adjacent to SR20, a state highway crossing the Reservation. There are upwards of 1,300 homes on the Reservation, and total Reservation population is estimated at approximately 3,000 (over 2,600 as of 2000 census).

Established in 1855 by the Treaty of Point Elliott, the Swinomish Reservation brought together several Coast Salish groups who shared a common language, a culture centered on fishing, and a ceremonial calendar revolving around cedar longhouses. Before the influence of European settlers, Coast Salish cultures derived their wealth from abundant natural resources and extensive inter-clan and lineage trade relationships that stretched well beyond the Puget Sound region. While salmon was a primary staple, Coast Salish people also harvested a wide variety of flora and fauna from the land, sea, and rivers, including a rich selection of shellfish species. Permanent villages consisted of longhouses that sheltered large extended families. The village provided a social support network during times of crisis and was used in celebrations and ceremonies that were an integral part of culture, health, governance, and the maintenance of kinship allegiances and exchange relationships important to the intensive harvesting required to accumulate the necessary foods and goods exchanged (Gunther and Haeberlin 1930, Roberts 1975, Suttles and Lane 1990).

With the formation of the Reservation and accompanying colonial restrictions on traditional cultural practices, tribal members faced decades of declining health, education, and community assets, along with increasing poverty, illness, drug abuse, and racism (Roberts 1975). Although the past 20 years have brought positive changes in economic and social conditions for the Tribe, many problems remain, including low graduation rates, high unemployment, lower income levels, and high rates of violence and drug abuse. Of the employed Swinomish workforce, more than 26 percent still live below the poverty line, which the Indian Health Service estimates is twice the poverty rate of the general U.S. population.⁷ The average health of Native Americans is measurably worse than the US population as a whole (Indian Health Service 2000, US Commission on Civil Rights 2003), with morbidity and mortality rates often many times higher than the U.S. average.⁸

⁷ Nationally the poverty rate for US population is 12.3 percent (DeNavas-Walt et al. 2007), while the Native American poverty rate is 26.6 percent (Webster, Jr. et al. 2007).

⁸ According to the Indian Health Service's *Facts on Indian Health Disparities* (2007), "American Indians and Alaska Natives die at higher rates than other Americans from tuberculosis (500 percent higher),

Improving social conditions can be attributed in part to recognition of fishing rights in 1975, reasserting the rights of the tribal members to harvest the local waters and tidelands that provide culturally important food staples, one of which is shellfish (e.g., clams, crabs, oysters, shrimp, mussels). Traditional foods such as salmon and shellfish are “cultural keystone” species to the Tribe; much more than a food source, these foods are a vital contribution to cultural, spiritual, and social life (Garibaldi and Turner 2004). Shellfish can be harvested year-round, providing a stable, high protein food source. Individual beaches are treasured for their shellfish populations and are maintained to avoid over-harvest. Loss of a traditional food is directly related to loss of morale, and cultural health and well-being (Arquette et al. 2002; Kuhnlein and Receveur 1996).

In recent years, the Swinomish Tribe, like many other tribes, began to develop commercial enterprises and established a casino in the mid-1990’s. The success of this and other enterprises has made it possible for the Tribe to begin reversing decades of social and economic decline, although unemployment rates often still exceed 30% and seldom drop below 20%. While these economic improvements have made it possible for the Tribe to provide amenities such as social and medical facilities, as well as new housing for its members, the Tribe still strongly embraces its resource-based traditions.



Figure 3-1. Location of Swinomish Indian Reservation.

alcoholism (550 percent higher), diabetes (200 percent higher), unintentional injuries (150 percent higher), homicide (100 percent higher) and suicide (60 percent higher).”

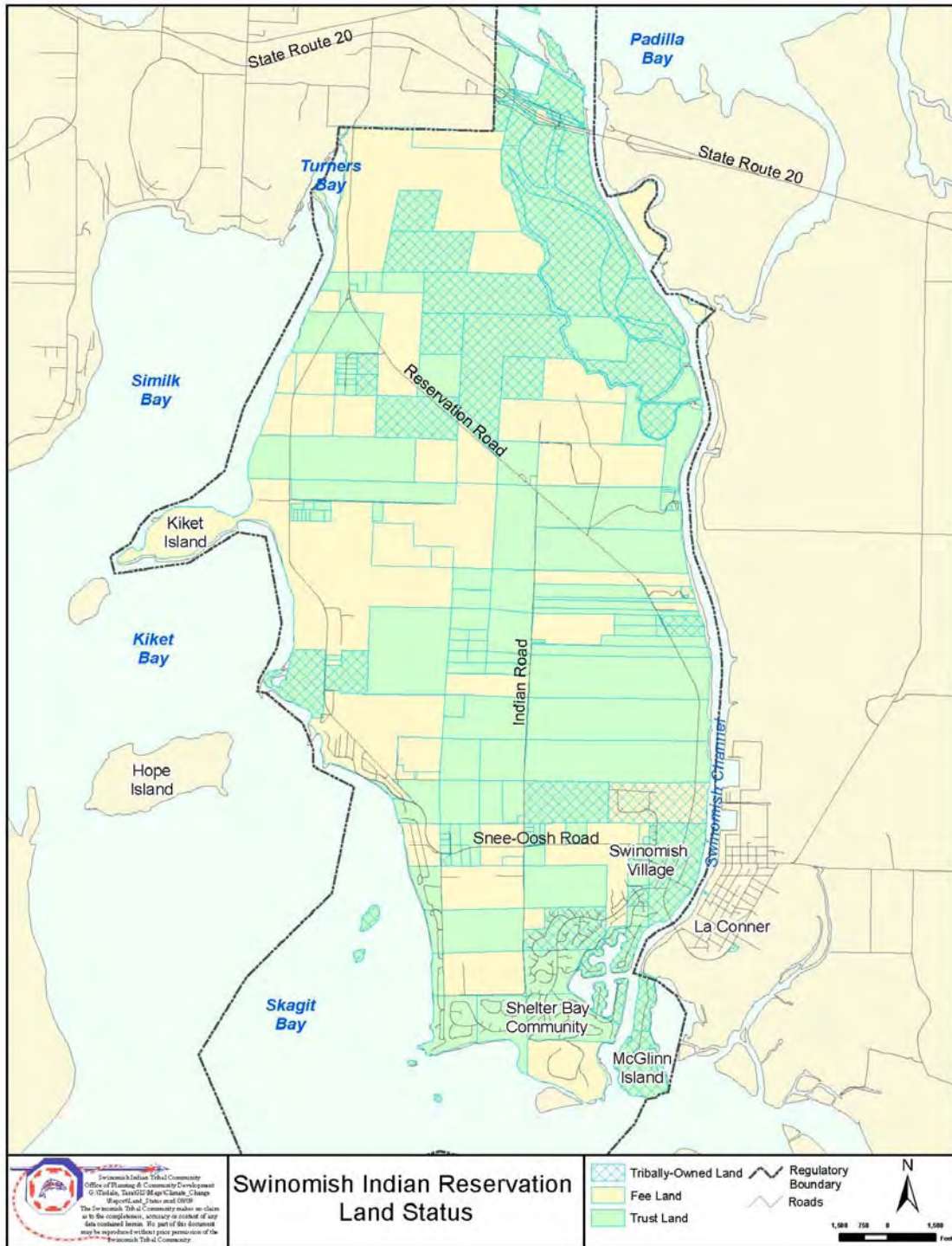


Figure 3-2. Land Status of Swinomish Indian Reservation.

3.2 Genesis of the Project

The geographic characteristics and coastal location of the Swinomish Indian Reservation place community assets, vital infrastructure, natural resources, sensitive cultural areas, low-lying economic development areas, and community health at risk from projected wide-ranging and long-term impacts of climate change. A climate change report issued by the State of Washington in 2006 identified the lower Skagit River area as a high risk for sea level rise; Figure 3-3 illustrates low-lying areas in the vicinity of the Swinomish Indian Reservation. The destructive potential of sea level rise was demonstrated in February 2006 when a strong storm surge pushed water levels several feet above normal, resulting in some flooding and damage to property on the Reservation and in La Conner. This was followed in November 2006, by a strong winter storm that downed trees and power lines across the Reservation, isolating the Reservation community for three days and prompting plans for evacuation of residents to the local Tribal gymnasium. These events heightened awareness of climate impacts in general and the lack of preparedness within the community, and they helped provide a catalyst for action to determine appropriate responses to climate impacts.

In recognition of this, the Swinomish Indian Senate issued a Proclamation in October of 2007 directing action to assess potential climate change challenges and develop appropriate responses. Following this Proclamation, the Tribe won funding through the U.S. Department of Health & Human Services, Administration for Native Americans (ANA), to support a major new \$400,000 Climate Change Initiative. While the Tribe acknowledges the need for action toward mitigating the causes of climate change, the approach of this project has been consciously directed toward adaptation actions to counter the anticipated effects of climate change on the Reservation community. This is based in large part on the recognition that while society at large must play a part in mitigation, it primarily falls to each community and local government to determine needed action toward adaptation. As discussed below, this need is ever greater for tribal communities.

3.3 Broader context of Indigenous peoples and climate change

The impacts of global climate change fall disproportionately on Indigenous peoples, as acknowledged by the IPCC (IPCC 2007). The National Congress of American Indians (NCAI) finds that “Tribal cultures and life ways are intimately bound up with their homelands, natural resources and ecosystems which are directly threatened by the effects of climate change” (NCAI 2009). Notable examples already exist, as in Alaskan native villages on the North Slope that are being forced to relocate as pack ice thaws and exposes villages to damage from surging water and wind. On Washington’s Olympic Peninsula, the Hoh and Quileute have struggled to acquire additional land for relocation as increasing erosion wears away the edges of their villages (Hansen 2008 and 2009).

Conversely, resources available to Indigenous peoples and communities to address adaptation to climate impacts are disproportionately scarce. Lacking a tax base or other such revenue sources commonly available to non-tribal governments, tribal communities rely upon enterprises, natural resource development, and federal trust obligations for support of critical governmental functions and community programs. Given the long timeline of anticipated impacts, the long lead time required to address the impacts in many respects, and the substantial and continuing commitment of resources required to support adaptation efforts, even the wealthiest tribal communities may find themselves hard pressed to meet the challenges of climate change.

The NCAI further urges tribes, in keeping with the affirmative exercise of sovereign powers as stewards of natural resources, to use their traditional knowledge in promoting efforts to assess and address climate change through mitigation and adaptation. Free, prior, and informed consent are the principles sought by Indigenous peoples in responding to climate change. This is a human rights based approach to climate change that is considered fully compatible with an ecosystem approach (de Chavez and Tauli-Corpuz 2008).

The Swinomish Indian Tribal Community supports the global and national efforts of Indigenous peoples for a seat at the table to plan, implement, and allocate resources for climate change measures, acting as sovereign entities with the various U.S. government bodies. At the local level, this Technical Impact Assessment Report sets the stage for future climate adaptation measures in keeping with the spirit of NCAI principles and the rights and responsibilities of Indigenous peoples. In the broader socio-political context, any number of communities may benefit from application of the principles of Indigenous peoples and methodologies such as embodied within this project. Indeed, it is the hope and intent of the Swinomish to serve as a pioneer in addressing climate change as a tribal effort, and a key objective of this project is to provide a model and template for others to follow and adapt, tribal or non-tribal.

3.4 Project Participants

The project is managed by the Swinomish Office of Planning and Community Development under the coordination of a key staff team led by Senior Planner, Ed Knight, as the project lead. Since climate change impacts will cross jurisdictional boundaries and require coordinated action on some issues, local government and community representatives were invited to participate in the project and provide input on key issues and development of strategies and action plans. These participants include representatives of Skagit County, the Town of La Conner, Shelter Bay Community, and Skagit River System Cooperative, who work with Tribal departments and staff on a project strategy advisory group. In addition, a community engagement advisory group, with members representing various sectors of the tribal community, was established to assist in communicating issues to the tribal community and in evaluating and soliciting feedback from the tribal community on issues of interest or concern.

A key partner in the project is the University of Washington Climate Impacts Group (CIG), serving as expert scientific advisor. CIG is part of the Center for Science in the Earth System at the University of Washington's Joint Institute for the Study of the Atmosphere and Ocean, and is one of nine Regional Integrated Sciences and Assessment teams studying impacts of climate change in the United States. CIG staff played a crucial role in reviewing scientific data, reports, and project documents, advising on the use of scientific data and information in the project, and in identifying probable local impacts and climate change scenarios.

Scientific expertise was also provided by Skagit River System Cooperative, which partnered with Western Washington University and Battelle Northwest to model hydrologic impacts at the local level. An additional staff team provided critical GIS mapping and analysis support to the project, as well as administrative support to project tasks.

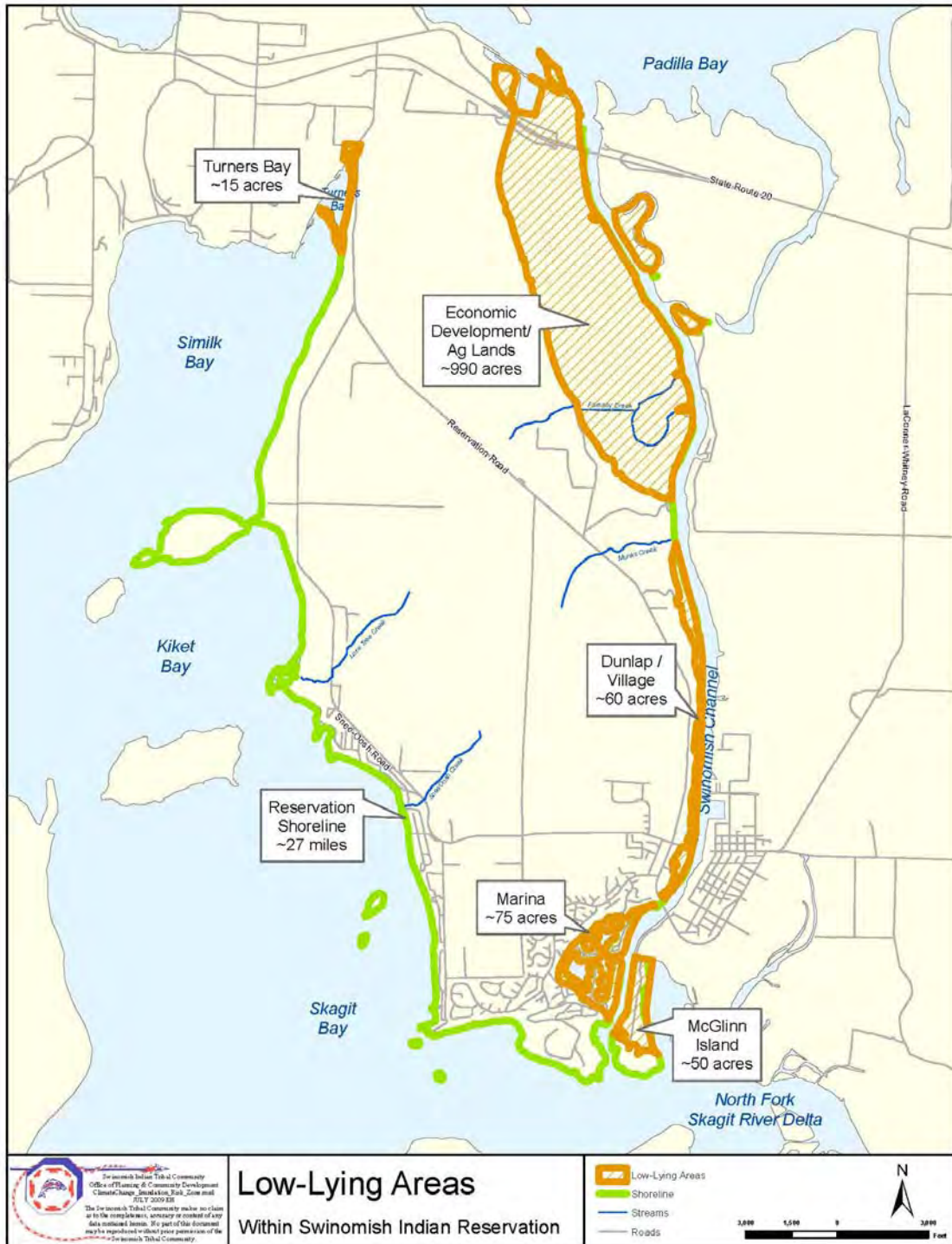


Figure 3-3. Low-Lying Areas Within the Swinomish Indian Reservation.

4 Assessment Process

The work plan for the project prescribed a specific step process for assessment of potential climate change impacts, vulnerability assessment, and risk analysis. To a large extent, the Tribe's approach and methodologies parallel those in the CIG/King County guidebook, **Preparing for Climate Change: A Guidebook for Local, Regional, and State Governments**, although the Tribe modified process elements of the methodology to suit particular Tribal needs and objectives.

4.1 Data, Metadata, and Tools

There is an escalating volume of scientific data, reports, and models to survey when reviewing climate change data. For this assessment, the Tribe elected to rely upon a combination of peer-reviewed reports on global change and those reports that focused specifically on impacts to the Pacific Northwest. The climate change reports, sources, and associated models/scenarios evaluated for this project, including this impact assessment, are cited in the References.

This assessment employs output from climate model simulations organized and reported on by the IPCC (2007), including a wide range of potential greenhouse gas (GHG) emission scenarios that model varying degrees and types of technological development, industrial development, population growth, and response to issues. These emissions scenarios span the spectrum of response, from "minimum action" worst-case scenarios (i.e., "business as usual" or "do nothing" scenarios), where projected impacts are the greatest, to "maximum action" best-case scenarios, where projected impacts are reduced. The IPCC's 2007 report, which represents a consensus among climate change scientists worldwide, provides a benchmark for many other analyses and reports. The climate models reported on by the IPCC (2007) successfully capture the seasonality and temperature trends for the Pacific Northwest over the last century, an indication that they will reliably provide projections for future conditions. While the models agree on the projections of increased annual temperatures in the 21st century, forecasts for precipitation are more variable across the models, though the average of all models projects a seasonal signal of wetter winters and drier summers for this region.

Despite the general consensus represented in the IPCC data and analyses, some scientists dispute the IPCC estimates of sea level rise and point to the exclusion of direct observations of melting of ice caps and underestimated levels of thermal expansion as factors accelerating sea level rise. For example, one such changing condition relates to earlier reports that projected the disappearance of summer Arctic sea ice by the year 2100; due to rapid melting observed in recent years, some scientists now project that summer Arctic sea ice may disappear within the next 5 to 10 years.⁹ Rahmstorf (2007) notes that observed sea level has followed the trajectory estimated by the uppermost uncertainty limit for global sea level rise of the IPCC's Third Assessment Report, and that the sea level rise values reported in the IPCC's Fourth Assessment Report now appear implausible in light of observed data. Rahmstorf (2007) advises that faster rates of sea level rise

⁹ Zabarenko D. (2007) "Arctic ice cap melting 30 years ahead of forecast" Reuters New Service, 1 May 2007 [http://news.yahoo.com/s/nm/20070501/sc_nm/globalwar..._ice_dc&printer=1;_ylt=Am_IMJ5hK0AxqrQPSg.gHMSiA NEA \(2 of 2\)/5/1/2007 3:56:08 PM](http://news.yahoo.com/s/nm/20070501/sc_nm/globalwar..._ice_dc&printer=1;_ylt=Am_IMJ5hK0AxqrQPSg.gHMSiA NEA (2 of 2)/5/1/2007 3:56:08 PM)

Presse F. (2009) "Scientist find bigger than expected polar ice melt" CommonDreams.org 25 Feb 2009 <http://www.commondreams.org/headline/2009/02/25-3>

JuneauEmpire.com (2007) "Experts say rapidly increasing melt rate could leave Arctic Ocean ice-free by 2012" http://juneauempire.com/stories/121207/sta_20071212025.shtml 12/13/2007 1:08:54 AM

should be considered when planning for adaptation. For the purposes of risk analysis, this assessment employs a range of impacts from sea level rise, from mid-range scenarios modeled by the IPCC (2007) to higher levels estimated by Rahmstorf (2007) within a given timeframe.

It is acknowledged that all climate change models and scenarios are associated with ranges of uncertainty resulting from varying degrees of model sensitivity to climate change, and that there are notable differences among the models, although for temperature all models indicate an upward trend in the future. Likewise, there are natural cycles of climate variability that occur over seasonal, annual, or even decadal periods within the longer trends of extended climate change, and such natural variability and relatively shorter-term cycles do not provide sufficient indication of long-term changes or trends. One such observed variability cycle important for the Northwest region is the “Pacific Decadal Oscillation,” an alternating inter-decadal climate pattern characterized by shifts in sea surface temperature, sea pressure and wind patterns (Mantua and Hare, 2002).

Data used to derive inundation zones was 2002 LiDAR elevation data for the Swinomish Reservation vicinity and Tidal Datums and Tidal Benchmark information from NOAA and the U.S. Army Corps of Engineers. Tidal and elevation data were processed, analyzed, and mapped using Swinomish GIS, and NOAA Vertical Datum Transformation Tool 2.2.4 for the tidal epoch 1983-2001 was used to convert NGVD29 vertical datum to LiDAR data. A more detailed description of data and GIS processing methodologies is contained in the Appendix 4.

4.2 Assessment Methodology

4.2.1 Initial Impact Identification

Initial identification of impacts was based on up-to-date, wide-ranging assessment of global climate change impacts, models, and data and in reports where data was downscaled to determine the regional effects of global climate change.¹⁰ These reports were evaluated with the assistance of CIG science advisors and were aggregated to obtain a representative set of scenarios ranging from low to high impact, with varying degrees of probability and uncertainty. Data and reports were further evaluated against current reported direct observations of climate and environmental changes as a gauge of rate of change. Some selected discipline-specific sources may also be cited where discussion addresses specific aspects of climate change effects (e.g., behavior of pavement or bridge joints in various extreme conditions, or behavior of disease vectors under specified climate conditions).

The range of aggregated scenarios and associated general potential impacts was then evaluated across a range of policy sectors, beginning with a basic analysis matrix as presented and discussed in Section 5.1. This matrix served as a first-step visual guide to overall likely areas of impact, with a preliminary rough assessment of probability within general timeframes of 20-50 years and 50-100 years, drawn from consideration of scenarios. For analysis purposes, sectors were drawn from comparable planning areas as identified in other Tribal documents such as the Swinomish Comprehensive Plan, to facilitate the incorporation of report recommendations into a broad range of planning documents. A more detailed sector-by-sector analysis of impacts was then performed, identifying impacts of medium to high probability, which are summarized in a set of assessment tables presented in Section 5 of this report and further discussed in accompanying narrative.

¹⁰ See Appendix 2 for discussion of data and scenarios analyzed by CIG for this assessment.

4.2.2 Vulnerability Assessment

Vulnerability assessment was undertaken in a 3-step process: 1) identification and mapping of potential impact areas (risk zones); 2) inventory of assets and resources within identified risk zones; and 3) evaluation of impact threshold and exposure (sensitivity and adaptive capacity). The intent of this analysis is to produce quantitative information on impacted assets and resources, along with specific local qualitative projections of impacts, resulting in computed level of impact, or consequence, for given sectors. Combining the derived consequences with probability projections provides a basis for further risk analysis. Mapping of impact areas resulted in three primary risk zones: a sea level rise inundation risk zone, a tidal surge inundation risk zone, and a wildfire risk zone. Additional specific risk areas were mapped where possible (e.g., potential erosion areas).

Current inundation zones were based on mapping of tidal range from Mean Lower Low Water (MLLW) to Mean Higher High Water (MHHW), developed from LIDAR data, Tidal Datums, and Tidal Benchmarks. For the purpose of risk analysis, projected inundation zones were derived by adding an increase of up to 5 feet for sea level rise (NWF 2007 upper range of surveyed scenarios) and an additional 3 feet beyond that for local tidal surge estimates (Zervas, 2005). The current MLLW and MHHW elevations were shifted accordingly to represent new projected levels of permanent inundation (MLLW) and maximum tidal influence (MHHW). It should be emphasized that the projected zones indicate areas of increased risk for this report, not necessarily projections of actual impact. Existing diking was represented as it exists in elevation mapping without consideration of potential adaptation measures. Initial risk zone mapping was developed to show potential impact with no presumed dike protection, to illustrate potential inundation in event of dike failure, intentional breach, or topping of dike by either higher projected tides or tidal surge. It should also be noted that not all areas subject to potential inundation are currently protected by dikes.

Urban/forest interface was evaluated using analysis of GIS and aerial photo data, correlating developed areas of varying densities to forested areas of given density. Forested areas cover the majority of Reservation uplands, while developed areas primarily lie within southeast, south, and west shore areas, although some scattered pockets of homes and homesites exist in interior uplands. Where denser developed and forested areas intersect, a wildfire risk zone was identified, as augmented by a 200-foot buffer around identified developed areas. While the entire Reservation is deemed to potentially be at risk of wildfire due to the extent of forestation, the identified urban/forest interface zones were considered to be at greatest risk, and for the purpose of risk evaluation and response strategy implementation, were designated as primary wildfire risk zones. The outcome of the vulnerability assessment is summarized and discussed in Section 6.

4.2.3 Risk Analysis

The ultimate outcome of this project is to identify and prioritize appropriate strategies to respond to climate change challenges. Choosing such strategies and assigning proper priorities necessarily relies upon the risk and probability of given events. Once vulnerability assessment is complete, risk analysis is a relatively straight-forward, computational exercise. The vulnerability assessment produces the level of impact, or “consequence,” for impacts on given sectors, and this consequence is combined with previously estimated probability to derive the estimated risk. In mathematical terms, $\text{Consequence} \times \text{Probability} = \text{Estimated Risk}$. This is demonstrated and summarized in Section 7.

5 Impact Assessment

5.1 Summary of General Climate Change Impacts

Based on review and evaluation of cited climate change reports and data, the following climate change effects and impacts were noted as may be generally applicable globally and regionally. Effects refer to observed and predicted changes in general environmental and climate conditions; impacts refer to those projections of impacts anticipated to result from the reported effects. These general effects and impacts have been further assessed for applicability to more localized conditions, as summarized and described in sections 5.2 and 5.3.

5.1.1 General climate change effects

Sea level (projected change through 2100):

- Conservative rise of 18-59 cm / 7-23 in. (IPCC, CIG)
- Accelerated rise of 55-125 cm / 22-49 in. (Rahmstorf, Pacific Institute)
- Increase in intensity and frequency of winter storm events/surges
- Increased/accelerated erosion, beach loss with sea level rise, storm events
- Increased salt water intrusion into coastal groundwater

Temperature:

- 1.5°- 4°C / 3°- 8°F increase by 2100 (IPCC, CIG)
- Heat stress on populations, species, facilities
- Increased pest/disease vectors
- Increased fire risk

Precipitation/Freshwater:

General regional effect

(balance of climate models, with large uncertainty)

- Slight increase in winter precipitation
- Decrease in summer precipitation

Rivers and streams

- Higher winter flows
- Lower summer flows

Mountains

- Decrease in snow-water equivalent (SWE), snowpack/glacial mass
- Upper elevation transition from snow-dominant to rain-dominant

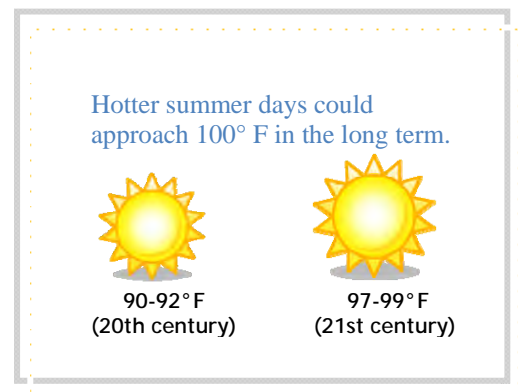
Marine waters:

- Increased acidification (lower pH due to higher CO₂ absorption)
- Increasing changes in water chemistry and parameters (lower pH, higher temperature, etc.)

5.1.2 General Impacts

Natural systems/habitat/resources:

- Conversion of estuaries to tidelflat/salt marsh
- Inundated marine habitat (shellfish, grasses)
- Stressed fishery habitat (lower flows, higher temps)
- Intrinsic nutrient changes
- Changes in species ranges/viability/distribution, migration of species
- Incursion of invasive species, pests/disease vectors
- Lower soil moisture, greater evapotranspiration, higher accumulation of fuel loads



Human systems/facilities:

- Reduced surface freshwater volume and availability in summer and early fall
- Inundation of low-lying/coastal facilities and structures
- Longer but drier growing season, increased drought conditions
- Increased heat stress on transportation systems, utilities
- Increased summer energy demand to counter heat effects, reduced winter demand
- Increased need for improvements to home cooling to counter effects of warmer summers

Human health:

- Increased incidence of heat-related illness (exhaustion, heat stroke, etc.)
- Increased agitation/decreased functioning from prolonged heat exposure
- Increased incidence of respiratory ailments
- Opportunistic disease vectors

Cultural resources:

- Shrinking land base (sea level rise)
- Inundation of coastal sites/artifacts
- Exposure of burial sites and human remains from strong storm events
- Loss of cultural use plants
- Impacts within traditional use areas

5.1.3 Impact Assessment Matrix

As a precursor to assessment of impacts on the Reservation community, impacts as listed above were evaluated across a broad range of resources and sectors, as indicated in Table 5-1. Color shadings indicate the estimated probability of impact in the general timeframe of either 20-50 years or 50-100 years, as derived from projections in the evaluated models and data. Rather than simply listing each planning sector and itemizing selected anticipated impacts, the intent of the matrix is to provide for comprehensive sector-by-sector evaluation of all potential impacts, maximizing the opportunity to consider unanticipated risks.

| POTENTIAL CLIMATE CHANGE IMPACTS BY POLICY SECTORS | | SWINOMISH INDIAN RESERVATION VICINITY | | IMPACT TYPE: | | 20 - 50 YR PROBABILITY: | | 50-100 YR PROBABILITY: | | HIGH PROBABILITY: | | UNSHADED: NOT LIKELY/NOT APPLICABLE | | UNSHADED: NOT LIKELY/NOT APPLICABLE | |
|--|--------------|---------------------------------------|-------------|--------------|---------|-------------------------|--------|------------------------|----------|-------------------|-----------|-------------------------------------|--------------|-------------------------------------|--|
| SECTOR/ELEMENT: | IMPACT TYPE: | Inundation | Tidal Surge | Severe Storm | Erosion | Salinization | Temp Δ | Heat Stress | Precip Δ | Nutrient Δ | Habitat Δ | Species Δ | Pest/Disease | Fire | |
| NATURAL SYSTEMS | | | | | | | | | | | | | | | |
| Shoreline/Beaches | | | | | | | | | | | | | | | |
| Tidelands/Marine Habitat | | | | | | | | | | | | | | | |
| Fish & Wildlife: | | | | | | | | | | | | | | | |
| Shellfish | | | | | | | | | | | | | | | |
| Salmon | | | | | | | | | | | | | | | |
| Forage fish | | | | | | | | | | | | | | | |
| Waterfowl/shorebirds | | | | | | | | | | | | | | | |
| Upland wildlife & habitat | | | | | | | | | | | | | | | |
| Water resources: | | | | | | | | | | | | | | | |
| Freshwater | | | | | | | | | | | | | | | |
| Groundwater | | | | | | | | | | | | | | | |
| Wetlands | | | | | | | | | | | | | | | |
| Forest resources | | | | | | | | | | | | | | | |
| Air Quality | | | | | | | | | | | | | | | |
| HUMAN/BUILT SYSTEMS | | | | | | | | | | | | | | | |
| Land uses: | | | | | | | | | | | | | | | |
| Near-shore development | | | | | | | | | | | | | | | |
| Housing/Residential | | | | | | | | | | | | | | | |
| Commercial/Industrial | | | | | | | | | | | | | | | |
| Stormwater management | | | | | | | | | | | | | | | |
| Hazardous Sites/Materials | | | | | | | | | | | | | | | |
| Agriculture | | | | | | | | | | | | | | | |
| Recreation | | | | | | | | | | | | | | | |
| Public/Private Utilities: | | | | | | | | | | | | | | | |
| Water | | | | | | | | | | | | | | | |
| Wastewater | | | | | | | | | | | | | | | |
| Communications | | | | | | | | | | | | | | | |
| Energy/Power | | | | | | | | | | | | | | | |
| Waste management/disposal | | | | | | | | | | | | | | | |
| Emergency Services: | | | | | | | | | | | | | | | |
| Police | | | | | | | | | | | | | | | |
| Fire | | | | | | | | | | | | | | | |
| Other emergency response | | | | | | | | | | | | | | | |
| Human Health | | | | | | | | | | | | | | | |
| Transportation: | | | | | | | | | | | | | | | |
| Access/circulation | | | | | | | | | | | | | | | |
| Road system integrity | | | | | | | | | | | | | | | |
| Bridges | | | | | | | | | | | | | | | |
| Public transit | | | | | | | | | | | | | | | |
| Marine/port facilities | | | | | | | | | | | | | | | |
| Cultural Resources | | | | | | | | | | | | | | | |

5.1.4 Impact Assessment Tables

Based on the assessment evaluation matrix, a more detailed sector-by-sector analysis of impacts was performed to identify specific impact types, extent, approximate timeframes, and probability. This detailed assessment is summarized in Tables 5-2 and 5-3. More in-depth discussion of impacts summarized in the tables is contained in the following sections.

TABLE 5-2. SUMMARY OF POTENTIAL CLIMATE CHANGE IMPACTS, SWINOMISH RESERVATION VICINITY HUMAN/BUILT SYSTEMS

| Sector | Element | Potential Impacts (Types) | Impact Extent | Estimated Timeframe | Probability/Confidence |
|----------|------------------------|--|---|------------------------------------|------------------------|
| Land Use | Near-shore Development | Increasing tidal inundation from gradual sea level rise | Shoreline within 5 vertical feet of MHHW | Increasing to long-term | High/High |
| | | Increasing frequency and severity of storm/ tidal surges | Shoreline within 8 vertical feet of MHHW | Near-term potential | High/High |
| | | Beach erosion with increasing rise/surges | Shoreline within 8 vertical feet of MHHW | Increasing to long-term | High/High |
| | Stormwater control | Inundation/backup of drainage lines and discharge points from higher tides, storm surges | Facilities within 8 vertical feet of MHHW | Near-term, increasing to long-term | Medium/High |
| | | Damage to discharge outfalls from bank erosion | Outfalls within 8 vertical feet of MHHW | Increasing to long-term | Medium/High |
| | Hazardous Sites | Spread of contaminants through inundation/flooding from higher tides, storm surges | Sites within 8 vertical feet of MHHW | Near-term, increasing to long-term | Medium/High |
| | Agriculture | Eventual inundation as increased high tides top dikes | Low-lying agricultural land (north end) | Increasing to long-term | High/High |
| | | Storm/tidal surges top out dikes | Low-lying agricultural land (north end) | Increasing to long-term | High/High |
| | | Increasing salinization from salt intrusion with rising sea levels | Low-lying agricultural land (north end) | Increasing to long-term | Medium/Medium |
| | Housing/Residential | Increasing tidal inundation from gradual sea level rise and higher tides (where tides top dikes) | Units/buildable lots within 5 vertical feet of MHHW | Increasing to long-term | High/High |
| | | Storm/tidal surge flooding, gently sloping shoreline areas, or where surge tops bank/seawall/dikes | Units/lots within 8 vertical feet of MHHW | Near-term potential | Medium/High |
| | | Bank erosion, threatening near-bank structures | Lots with shoreline banks steeper than 3:1 | Increasing to long-term | Medium/High |
| | | Increased risk of wildfire from increasingly drier conditions | Units within or near urban/forest interface | Near-term potential | High/High |

| Sector | Element | Potential Impacts (Types) | Impact Extent | Estimated Timeframe | Probability/Confidence |
|--|-----------------------|--|--|------------------------------------|------------------------|
| (Land Use, cont'd.) | Commercial/Industrial | Increasing tidal inundation from gradual sea level rise and higher tides (where tides top dikes) | Structures/lots within 5 vertical feet of MHHW | Increasing to long-term | High/High |
| | | Storm/tidal surge flooding, gently sloping shoreline areas, or where surge tops bank/seawall/dikes | Units/lots within 8 vertical feet of MHHW | Near-term potential | Medium/High |
| | | Bank erosion, threatening near-bank structures | Lots with shoreline banks steeper than 3:1 | Increasing to long-term | Medium/High |
| | | Increased risk of wildfire from increasingly drier conditions | Structures within/near urban/forest interface | Near-term potential | High/High |
| | Recreation | Increasing tidal inundation of public beaches/parks from gradual sea level rise and higher tides | Beaches/parks within 5 vertical feet of MHHW | Increasing to long-term | High/High |
| | | Storm/tidal surge flooding, gently sloping shoreline areas, or where surge tops bank/seawall/dikes | Beaches/parks within 8 vertical feet of MHHW | Near-term potential | Medium/High |
| Spread of contaminants through inundation/flooding from higher tides, storm surges | | Sites within 8 vertical feet of MHHW | Near-term, increasing to long-term | Medium/High | |
| Public/Private Utilities | Water | Reduced summer supply from decreased source (river/ snowpack) | System-wide users | Increasing to long-term | Medium/High |
| | | Contamination of local supplies from inundation/flooding | Event-dependent | Increasing to long-term | Medium/High |
| | Wastewater | Inundation of treatment facilities from higher tides, storm surges | Facilities within 8 vertical feet of OHWM | Increasing to long-term | Medium/High |
| | Communications | Service disruption from severe storm events; duration of outage proportional to severity | Event-dependent, potentially area-wide | Near-term, increasing to long-term | Medium/High |
| | Energy/Power | Service disruption from severe storm events; duration of outage proportional to severity | Event-dependent, potentially area-wide | Near-term, increasing to long-term | Medium/High |
| | | Increased summer demand to counter higher temperatures | System-wide users | Increasing to long-term | Medium/High |
| | Waste Disposal | Spread of waste from local/loose containers during flooding from higher tides, storm surges | Sites within 8 vertical feet of MHHW | Near-term, increasing to long-term | Medium/High |

| Sector | Element | Potential Impacts (Types) | Impact Extent | Estimated Timeframe | Probability/Confidence |
|--------------------|---|---|---|------------------------------------|------------------------|
| Emergency Services | Police | Increased demand for assistance/emergency response during severe storm events, outages, flooding | Event-dependent, potentially area-wide | Near-term, increasing to long-term | Medium/High |
| | Fire | Increased demand for assistance/emergency response during severe storm events, outages, flooding | Event-dependent, potentially area-wide | Near-term, increasing to long-term | Medium/High |
| | Other Emergency (disaster response, repair crews, etc.) | Increased demand for assistance/emergency response during severe storm events, outages, flooding | Event-dependent, potentially area-wide | Near-term, increasing to long-term | Medium/High |
| Human Health | Heat-related illness | Increased demand for and stress on services to treat heat-related health issues (heat exhaustion/stroke, etc.) | Area/event-dependent, potentially community-wide | Increasing to long-term | High/High |
| | Disease vectors | New/increased disease vectors, and related outbreaks | Case/event-dependent, potentially community-wide | Increasing to long-term | Medium/Medium |
| | Pollution-related illness | Increased pollution-related illness exacerbated by weather and climate conditions | Case/event-dependent, potentially community-wide | Increasing to long-term | Medium/Medium |
| | Solar radiation issues | Increase in skin cancers from higher UV radiation levels ¹¹ | Case-dependent | Decreasing to long-term | Medium/Medium |
| | Respiratory disease | Increasing incidence of asthma, and allergen-related problems | Case/event-dependent | Increasing to long-term | Medium/Medium |
| | Food-related illness from contaminated seafood | Increased incidence of poisoning from consuming toxin-laden seafood (PSP in shellfish, mercury in salmon) ¹² | Case/event-dependent | Increasing to long-term | Medium/Medium |
| Transportation | Access/Circulation | Inundation of access routes, travel disruption and isolation from mainland, as higher tides top dikes | Roads of 5 feet elevation or less | Increasing to long-term | High/High |
| | | Travel disruption/road closures due to stronger/more frequent storm/tidal surge events | Road sections of 8 feet elevation or less within shoreline vicinity | Near-term, increasing to long term | Medium/High |
| | | Incidental road closure/travel disruption from wildfire | Roads in heavily vegetated areas | Increasing to long-term | Medium/High |

¹¹ Not directly related to increased GHG but to reduction in atmospheric ozone; risk is stabilizing, expected to decline.

¹² Not exclusively related to climate change, but potentially exacerbated by it.

| Sector | Element | Potential Impacts (Types) | Impact Extent | Estimated Timeframe | Probability/ Confidence |
|---------------------------------|---------------------------------|---|--|------------------------------------|--------------------------------|
| (Transportation, cont'd.) | Road System Integrity | Flooding damage from storm/tidal surge, buckling/cracking from higher temperatures | Roads within shoreline vicinity (surge), all roadways (heat) | Near-term, increasing to long term | Medium/ High |
| | Bridges | Erosion of bridge footings from higher tides/storm surges | Rainbow Bridge, SR20 Bridges | Increasing to long-term | Medium/ High |
| | | Increased fatigue/deterioration of bridge joints from increased/ prolonged heat | Rainbow Bridge, SR20 Bridges | Increasing to long-term | Medium/ High |
| | Public Transit | Service disruption, impact-related closures | Routes serving the Reservation | Increasing to long-term | Medium/ High |
| | Marine transport facilities | Increasing inundation of marine facilities and ports from gradual sea level rise and higher tides | Shore-dependent facilities and structures | Increasing to long-term | High/ High |
| Cultural Resources & Traditions | Coastal sites/artifacts | Increasing inundation of sites from gradual sea level rise | Sites within 5 vertical feet of MHHW | Increasing to long-term | High/ High |
| | Burial sites/human remains | Disturbance/exposure from severe storm events | Sites within 8 vertical feet of MHHW | Near-term, increasing to long-term | Medium/ Medium |
| | Cultural use plants and animals | Loss/migration of traditional cultural use species | Site/species dependent | Increasing to long-term | Medium/ Medium |
| | Traditional use areas | Loss of treaty resources (e.g., fishing, hunting, gathering) | Site/resource dependent | Increasing to long-term | Medium/ High |
| | Shellfish harvesting | Potential loss of harvest sites and opportunities due to impacts to shellfish populations and habitat | All shellfish beds and habitat | Increasing to long-term | High/ High |
| | Beach seining | Potential loss of beach seining sites and opportunities | All current beach seine sites | Increasing to long-term | High/ High |
| | Marine facilities | Increasing impacts to dock facilities from rising sea level, impairing fishing activities | All dock facilities | Increasing to long-term | High/ High |

TABLE 5-3. SUMMARY OF POTENTIAL CLIMATE CHANGE IMPACTS, SWINOMISH RESERVATION VICINITY NATURAL SYSTEMS

| Sector | Element | Potential Impacts (Types) | Impact Extent | Estimated Timeframe | Probability/ Confidence |
|---|-------------------------|---|--|-------------------------|-------------------------|
| Shoreline/Beaches | (general) | Increasing tidal inundation from gradual sea level rise | Unprotected shoreline from MLLW to 5 feet above MHHW | Increasing to long-term | High/ High |
| | (general) | Increasing frequency and severity of storm/ tidal surges | Unprotected shoreline from MLLW to 8 feet above MHHW | Near-term potential | High/ High |
| | (general) | Beach erosion with increasing rise/surges | Shoreline within 8 vertical feet of MHHW | Increasing to long-term | High/ High |
| Tidelands/Marine Habitat | Habitat viability | Increasing inundation from sea level rise forcing gradual migration to maintain viability | Tideland habitat from MLLW to MHHW | Increasing to long-term | High/ High |
| | Estuarine beaches | Increasing inundation and loss from rising sea level | Estuarine beaches from MLLW to MHHW | Increasing to long-term | High/ High |
| Fish & Wildlife | Shellfish | Increasing inundation of shallows, estuaries | All populations | Increasing to long-term | High/ High |
| | | Weakened viability due to habitat changes | All populations | Increasing to long-term | Medium/ Medium |
| | Fin Fish | Increasing inundation of shallows, estuaries | All populations | Increasing to long-term | High/ High |
| | | Weakened viability due to habitat changes (temperature, acidification, etc.) | All populations | Increasing to long-term | Medium/ Medium |
| | Waterfowl/Shorebirds | Loss of forage opportunities and areas due to impacts on food sources | Marsh, wetland, and estuarine dependent species | Increasing to long-term | Medium/ Medium |
| | Upland wildlife/habitat | Degradation/conversion due to higher temperature and increased wildfire incidence | All populations | Increasing to long-term | Medium/ Medium |
| Stressed viability from habitat and temperature changes, forced migration | | All populations | Increasing to long-term | Medium/ Medium | |

| Sector | Element | Potential Impacts (Types) | Impact Extent | Estimated Timeframe | Probability/Confidence |
|------------------|-------------|--|---|------------------------------------|------------------------|
| Water Resources | Freshwater | Declining volume, consistency of instream flow | All streams/tributaries | Increasing to long-term | Medium/High |
| | Groundwater | Increasing salinization from salt water intrusion | Where in proximity to salt water influence | Increasing to long-term | Medium/High |
| | Wetlands | Increasing inundation from higher tides, storm surges | Wetlands within 8 vertical feet of MHHW | Increasing to long-term | High/High |
| Forest Resources | (general) | Lower moisture content, increased fire risk | Stands with higher fuel loads, fuel ladders | Near-term, increasing to long-term | High/High |
| | | Heat stress, increase in drought-tolerant species (e.g., fir), decrease in drought-sensitive species (e.g., cedar) | Forest-wide | Increasing to long-term | Medium/High |
| | | Increasing pest infestations, disease vectors (bark beetles, fungus, etc.) | Forest-wide | Near-term, increasing to long-term | High/High |
| Air Quality | (general) | Increasing stagnation, noxious elements/parameters due to higher average temperatures | Reservation-wide | Increasing to long-term | Medium/Medium |

5.1.5 Impacts on Specific Reservation Subareas

Projected impacts summarized in this section for Reservation subareas are primarily qualitative, and much depends on the rate of sea level rise and other factors effecting habitat conversion or transition to new conditions. Figure 5-1 illustrates subareas discussed below.

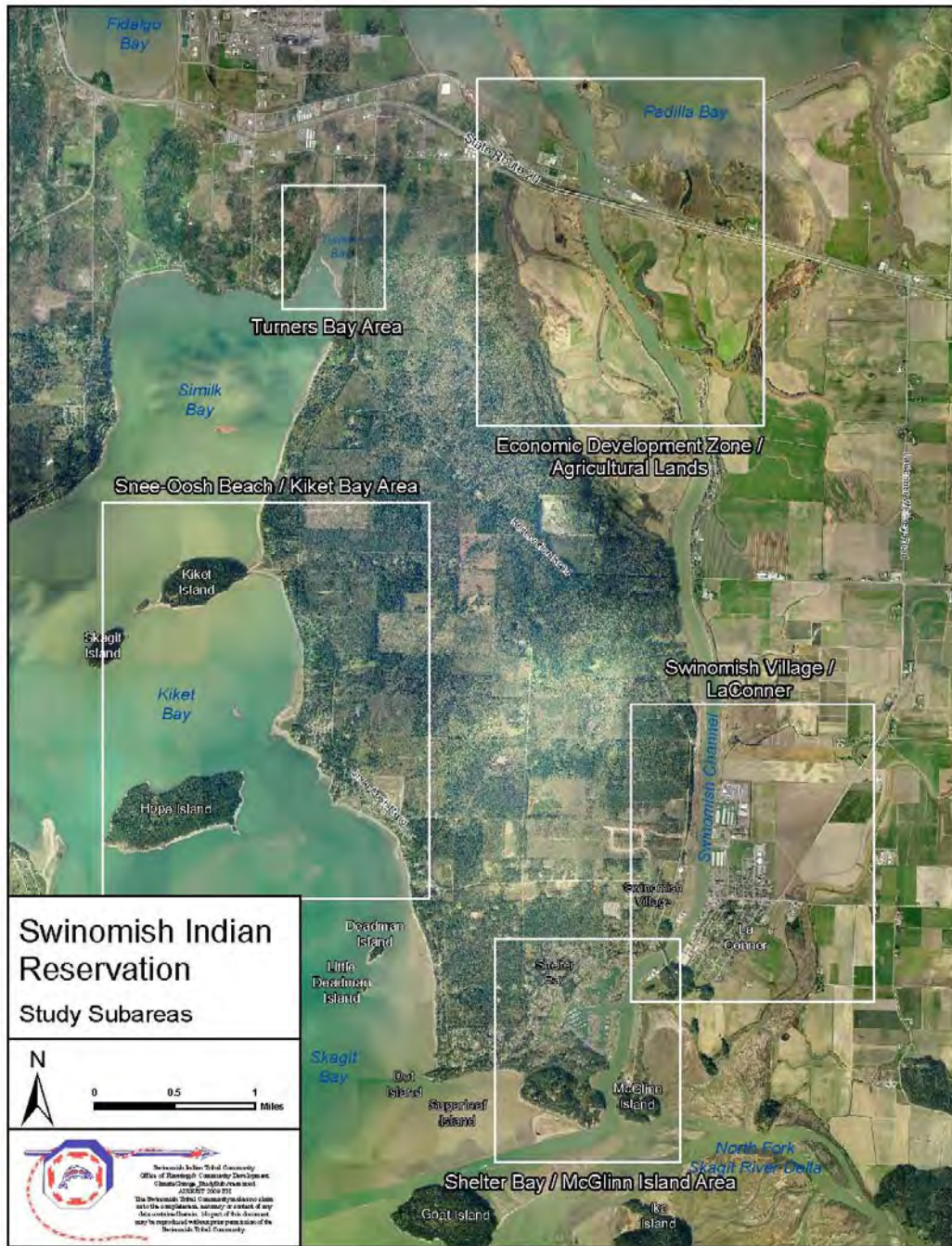


Figure 5-1. Study Sub-Areas, Swinomish Indian Reservation

a. *Padilla Bay and North End of the Reservation.*

The existing sand islands at the north end of the Reservation, in Padilla Bay, are important nesting habitat for shorebirds as well as an area for waterfowl hunting. Under all sea level rise scenarios, these islands will be inundated. As sea level rises, upland habitats will transition to tidal washed sand spits or possibly salt marsh. Some shorebird habitat may still be available moving from the beaches around the islands to the top of the islands, but the total nesting habitat will be greatly reduced.

The lagoon west of the Casino is currently estuarine marsh and tideflats. It may transition to salt marsh and possibly some tideflats with a commensurate loss of habitat productivity. This lagoon has current habitat value and is considered a priority for habitat restoration, assuming cleanup or protection from further contamination (see Hazardous Waste 5.3.1e) and increasing tidal exchange by opening up another breach in the railroad dike. However, study will be required to determine how sea level rise will impact this site long-term and what potential it has for restoration under such a scenario.

The Tribal economic development area north and south of the SR 20 is subject to tidal surge and potentially to inundation as higher tides begin to top existing dikes. Potential impacts to structures and other economic uses of this area are reviewed in more depth in sections 5.3.1, 6.1, and 6.2 of this report. Ultimate decisions on future land uses in this area will in turn determine other impacts. For example, to maintain the area as a Tribal Economic Zone, buildings would need to be raised and strengthened to survive storm events, and dikes would need to be raised or areas raised with fill, particularly south of SR 20. This would essentially “harden” the area for any future habitat use, and such protections would likely have only temporary usefulness. As discussed in section 6.2, however, the option to raise development areas south of SR20 with fill may not be available, due to complications with impacts of fill on existing major buried pipelines. If a determination is made to abandon the area in the future as the Tribe’s key economic development zone and relocate such uses elsewhere, the area will have potential for restoration for various habitats depending on elevation and other factors. Intermediate planning may be done to determine the estimated safe lifetime of investments for economic development without substantial investment in protection, to allow some productive use of lands for some limited amount of time.

b. *Swinomish Village and Swinomish Channel*

On the Swinomish Village waterfront there are several Tribal buildings in the tidal surge zone, including the Planning Office, fishery management offices, and the fish processing plant. It may become necessary to raise and/or otherwise protect the fish processing plant and access to the Tribal fishing fleet docks, if they are to stay in this location adjacent to the water. Alternately, Tribal buildings could be relocated elsewhere within the Village away from the risk zone, although the high cost of doing so would require significant advance planning and investment.

On either side of the abandoned bridge abutment at the east end of Snee-Oosh Road, a pocket estuary restoration is planned. This will take up much of the waterfront area of the village itself and presages sea level rise in this area. Planning for this project should take long-term sea level rise into account and allow for inland migration of the habitat within the site.

A substantial length of shoreline along the Swinomish Channel is leased for log towing and storage operations. A strip along this shoreline will potentially be at increasing risk of inundation

from sea level rise or subject to tidal surges. A somewhat wider section, nearly cutting the site in half, is subject to sea level rise and tidal surge. Along these areas, at the base of the bank, beaches and some wetlands will potentially be lost in narrow band running up the Channel. The wider inundation area may provide an opportunity for restored wetland habitat.

It should be noted that substantially more area is potentially subject to sea level rise and tidal surges off the Reservation across the Channel in La Conner and surrounding low-lying farmland areas. Potential inundation in the La Conner area could, if it were to top existing berms, impact all of lower La Conner, including an apartment building complex currently owned by the Tribe, as well as a key access point to the Reservation. Indeed, a strong storm/tidal surge in February, 2006, came within inches of topping the low berm in lower La Conner. Should such tidal surge flooding of lower La Conner occur in the future, the impacts would be significant not only for La Conner but also for the Tribe, as access to the Reservation could be cut off, and businesses, schools, and services in La Conner used by local residents could be impacted.

c. Shelter Bay

The marina portion of Shelter Bay and surrounding homes, along with community buildings, are potentially subject to storm and tidal surges. This area contains the greatest number of homes at risk on the Reservation, as well as storm drains affecting upland drainage. More specific information on impacted homes is presented in section 6.

Given the significant modification of the shoreline in the marina basin, sea level rise will have little real impact on habitat compared to other areas. On the other hand, the response to vulnerability of the homes around the marina could have more impacts. If a decision were made to retreat from areas at risk, some amount of area could be available for habitat restoration. With the substantial modifications and hardening of the area, this could be very expensive for any significant restoration. If, in order to protect homes, the area is raised or further hardened, there could be additional impacts on the environment and habitat. Much would depend on what options are pursued for this marina basin and surrounding homes.

Martha's Beach could eventually disappear, with most of the beach and backshore inundated. While estuarine beach habitat would be lost, it may be possible to reestablish it further upland along the base of the slope as the water rises, and an existing freshwater wetland could transition to a more brackish wetland. The existing wetland in Boathouse Cove would likely be inundated and possibly transition from an estuarine wetland to a salt marsh or similar habitat.

d. McGlenn Island

While the main headland of the island will remain above the rising sea level, much of the causeway connecting it to the mainland will be potentially inundated and the rest subject to tidal surges. Along the causeway itself this would not lead to much critical habitat loss, although it will create increasing problems with access to existing boat repair facilities on the south end of McGlenn Island. Dry sand dredge spoil uplands would be converted to tidal sand flats or estuarine habitat. This actually could happen on a portion of the causeway much sooner than projected, as a project is proposed to remove a portion of the causeway and create a pocket estuary restoration. The second phase of the proposed project, somewhat more speculative, would completely breach the causeway, allowing out-migrating salmon smolts to travel from the North Fork of the Skagit into the Swinomish Channel and up to Padilla Bay, increasing juvenile survival rate.

Breaching the causeway will, sooner or later, lead to transition of the freshwater tidal marsh of Dunlap Bay to be converted to a more saline system of transitional marsh or possibly estuarine tidal marsh. The riparian forest along the east side of the causeway would also be lost in a more saline environment.

Beaches around the main portion of McGlinn Island would likely be lost with sea level rise squeezing them out at the bottom of rocky cliffs. The jetty connecting McGlinn Island to Goat Island, and separating the Skagit River from the Swinomish Channel, would eventually be inundated allowing a more direct fish passage and freshwater inputs to the Channel. The outcome of this related to fish survival is unknown as the studies done to date have been on a static system, and did not include the effects of sea level rise and changes in water quality, salinity and acidity.

e. Snee-Oosh to Kiket

The Snee-Oosh Beach area is identified as a sensitive area for both sand lance and surf smelt spawning. Behind these beaches on the southern part is a flat graveled parking area for beach users on allotment land. The middle section abuts a rip-rap barrier protecting a section of county road with homes beyond that, and the rip-rap continues north, protecting a freshwater wetland as well as community lawn and tennis courts. Due to aspect and fetch, Snee-Oosh beach is also a prime example of an area highly susceptible to potential future storm surge impacts. A storm event at high tide in February of 2006 drove waves and debris such as large logs over the county roadway and into the yards of a number of homes. Absent protective measures, a similar event starting from a higher future sea level could damage or destroy numerous homes, damage the road, and overtop the rip-rap dike, adding surges of saline water to the freshwater wetland (and eventual inundation and conversion to transitional or brackish wetland) and resulting in loss of a critical forage fish spawning beach.

The Thousand Trails Campground encompasses several areas of potential impact. The southern portion is low and subject to inundation from sea level rise and tidal surge. This area includes several rental cabins and other facilities as well as a partially filled freshwater wetland. Lone Tree creek, lagoon and spit would be impacted by sea level rise with much of the spit eventually inundated. The lagoon would become more saline, and inundation and surges would work part-way up the recently restored creek. These changes would affect juvenile salmon use of the lagoon and lower creek. The spit is also the site of a traditional tribal beach seine fishery. Whether this culturally and economically important activity could continue in the future may depend on the level and rapidity of sea level rise relative to accretion of the spit as well as the extent the activity can be adapted to higher water levels on the spit. Major tribal shellfish harvest areas could also be affected, unless the beds are able to migrate up onto the spit as sea level rise occurs. Existing beds will be accessible only at lower tides and some may not be accessible for harvest at all.

Kiket Bay is heavily armored along the bank, and with sea level rise it is likely to lose most of its beach habitat. Kiket Island is largely undeveloped and is surrounded by prime shellfish beds as well as other beach habitat. The tombolo¹³ connecting the island with the main part of the Reservation is subject to storm surge and eventual inundation. This could result in migration of beach habitat up onto the tombolo preserving some of that habitat for the area. Kiket lagoon and estuarine marsh would likely become more saline, but a current grassy lawn area to the north has potential for conversion to higher marsh. Kiket Island uplands are being considered for a State Park.

¹³ Tombolo: a narrow piece of land such as a spit or bar that attaches an island to the mainland

f. Turner's Bay

Turner's Bay is a natural pocket estuary with a sand spit nearly closing it off and a small freshwater stream entering the head of the bay from outside the Reservation regulatory boundaries. Turner's Bay spit will eventually be inundated by sea level rise. The current beach on the outside of the spit, a surf smelt spawning area as well as major shellfish harvest bed, might have room to migrate up onto the spit if sea level rise is not too rapid. The bay behind the spit, a critical pocket estuary, will generally become more saline with conversion of estuarine marsh to transitional marsh or salt marsh depending on elevation and depth of sea level rise. Estuarine marsh or swamp may remain in a narrow ring around the bay. At the head of the bay, higher ground may become estuarine marsh, thus replacing some lost estuarine march. This could occur with the proposed removal of Similk Bay Road, a county road and tide gate blocking the head of the bay from a mainly freshwater marsh just beyond the Reservation regulatory boundaries.

Increasing inundation and potential tidal surges also threaten another key point of access to the Reservation, where a low point on Reservation Road is adjacent to the north end of Turner's Bay. As almost occurred during the February 2006 event, flooding of this roadway would cut off access to the Reservation from the north; combined with concurrent flooding of access in La Conner, the Reservation could be entirely isolated from the mainland.

5.2 Natural Systems

5.2.1 Shorelines and Beaches

The primary impacts to shoreline resources will be from sea level rise and associated impacts of inundation, storm and tidal surge and shoreline erosion. This is true for impacts to natural systems and habitats as well as the human and built environment in the shoreline zone.

The potential inundation zones differ slightly from the regulatory shoreline zone as defined in the Swinomish Shorelines and Sensitive Areas (SSA) ordinance. The regulatory shoreline zone extends from extreme low water to 200 feet inland of the Ordinary High Water Mark (OHWM). This includes area between the Mean Lower Low Water Mark (MLLW, below which areas are generally inundated) and the Mean Higher High Water Mark (MHHW, above which areas are rarely inundated).

Potential sea level rise inundation zones and tidal surge zones were mapped for the Swinomish Indian Reservation, based on analysis of existing tidal data and projected range and probability of sea level rise, as shown in Figure 6-1 and Appendix 7. These maps indicate the potential shift in MLLW and MHHW through approximately 2100, and by inference the areas in which assets and resources may potentially be at risk from sea level rise and/or tidal surge.

As sea level rises, impacts occur in several ways:

- Areas between the current MLLW and MHHW shift from shallow habitat to deeper habitat conditions, and from occasional inundation to more frequent inundation;
- New areas become permanently inundated below the rising MLLW mark;
- Areas further inland not previously subject to inundation become periodically inundated from higher tides or from storm surges above the rising MHHW mark. With sea level rise those impacts begin from a higher base and create a risk to resources and structures higher above the current MHHW.

5.2.2 Tidelands and Marine Habitat

a. *Habitat Viability and Migration*

To continue to be viable, habitats within specific levels and frequencies of inundation will need to be reestablished higher up or migrate shoreward as the sea level rises. Those that can migrate or reestablish at a rate quickly enough to keep pace with sea level rise will survive, but they will require a place to migrate to without being blocked by steep banks, bulkheads, or other barriers. Bulkheads, rip-rap, and other types of shoreline armoring will make successful habitat migration difficult if not impossible. According to other Puget Sound studies, there will be losses of certain types of habitat and gains in others. In the general region of Padilla Bay, Skagit Bay, and Port Susan Bay, some of the key losses estimated by 2100 for projected sea level rise of 59 inches (NWF 2007, highest estimate) include the following:

- 87% loss of tidal freshwater marsh;
- 99% loss of estuarine beach; and
- 97% loss of brackish marsh.

General marine habitat types and associated tidal influence are illustrated in Figure 5-2.

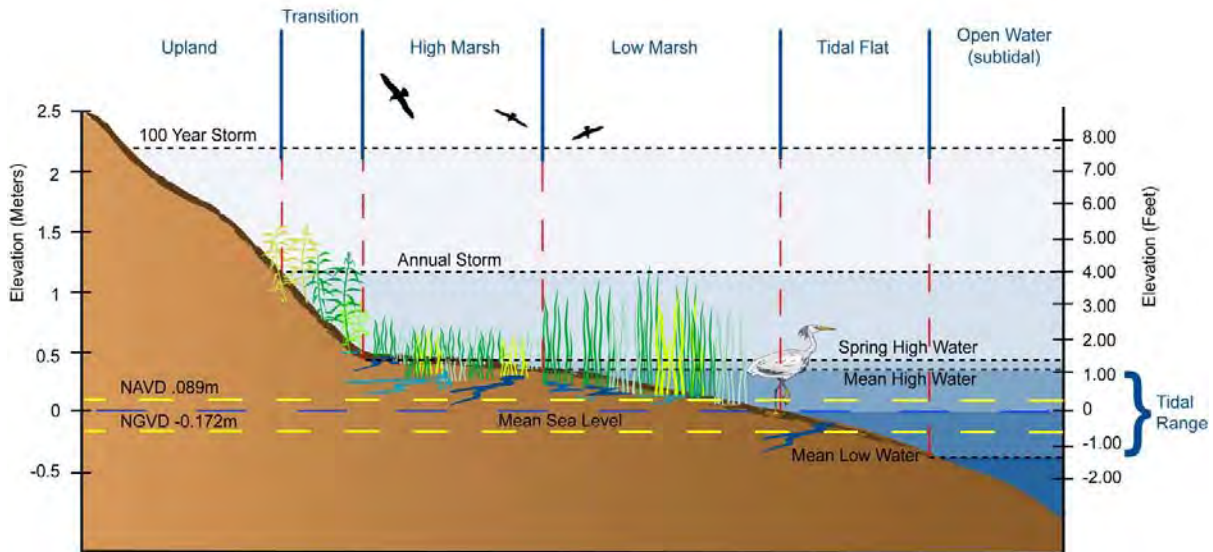


Figure 5-2. General marine habitat types and associated tidal influence.

(Source: http://maps.risingsea.net/wetland_loss/tides_wetlands_elevation.jpg)

Habitat losses in the Skagit River Delta will include loss of shrub-scrub marsh, riverine tidal scrub marsh and riverine tidal forest. Gains will include estuarine emergent marsh. (Hood, 2008). Comparing these studies with conditions on the Reservation yields similar projections where the habitats in question are similar. The Reservation will lose the outer edges of existing tidal flats as waters grow deeper, but some tidal mudflats and similar habitat will likely form shoreward of the existing areas where not blocked from doing so. Steeper banks along Similk Bay, Skagit Bay, Martha's Bay, and the Swinomish Channel, combined with shoreline armoring where it exists near upland development, will at some point limit migration of habitat. An accurate estimate of habitat gains and losses requires a more detailed analysis of the Reservation nearshore habitats. However, some rough estimates are possible in this analysis.

Eelgrass beds are of critical importance to herring spawning, juvenile salmon use and other marine species. Modeling simulations indicate a possible net increase in eelgrass beds in Padilla Bay as the habitat moves from the center of the bay shoreward with sea level rise (Kairas and Rybczk 2009). There may be similar losses of eelgrass on the outer edges of Reservation waters from sea level rise, but there appears to be room to shift shoreward in some areas. Greater impacts to this habitat may occur from other factors such as increases in water temperature, changes in water quality, or impacts from shoreline armoring and other development. If increases in armoring to protect shoreline properties from sea level rise are allowed, the impact on nearshore habitats such as eelgrass, especially as they migrate shoreward, could be significant.

b. Estuarine Beaches

One type of habitat most at risk is estuarine beaches, which may experience up to a 99% loss in the area under projected sea level rise of 59 inches (NWF, 2007). These areas, sandy and gravel beaches in the middle to upper tidal ranges, provide not only recreational and aesthetic uses but also critical areas for forage fish spawning habitat. Surf smelt and sand lance spawn on such beaches and provide much of the food for salmon and other species, including shorebirds. These beaches are considered a key component to maintaining a productive food web in the Puget Sound ecosystem. In general, estuarine beaches are in a relatively narrow band along the Reservation shoreline and are often at the base of steep slopes or are bordered by upland development, including bank protection structures such as rip-rap and bulkheads which would prevent their inland migration.

Where steep bluffs or easily eroded feeder bluffs exist above such beaches and are not protected by bulkheads or similar structures, it is possible that the erosion from the bluffs and contribution of sediments will allow a narrow strip of beach to be maintained. That depends, however, on a number of physical factors and processes and their relative speed of occurrence with climate change and sea level rise. Where beaches are backed by dikes, bulkheads, and other structures they will likely be lost, with lower tidal habitats extending up to the base of many such bulkheads.

5.2.3 Fish and Wildlife

a. Salmon

There are a number of potential impacts to salmon, including changes in conditions at sea, increased water temperature, loss of spawning and rearing habitat from decreased summer stream flows, and increased sedimentation and/or scouring during high winter and storm flows. Declining, warmer dry season streamflows will place additional stress on viability of stream habitat. Heavy runoff from more frequent intense storm events may cause greater sedimentation of stream and drainage channels or scour beds, adversely impacting fish passage, production, and survival. Fish may also become stranded during flooding or inundation events, further affecting their survival. Detailed assessment of these impacts is beyond the scope of this report and will require separate analysis, but intertidal and estuarine habitat loss from sea level rise will certainly be a factor. Loss of estuarine wetlands and other wetland types such as tidal swamp and brackish marsh will affect juvenile salmon survival. Juvenile Chinook may be especially affected due to extensive use of these habitats for rearing and migration. Reduction in forage fish populations will reduce food abundance and availability for salmon.

b. Forage Fish

Sand lance and surf smelt spawn in the upper half of the inundation zone on sand and gravel beaches with the right grain sizes. With the loss of estuarine beaches these species will be especially impacted. These forage fish provide a critical component of the food chain for adult salmon, shorebirds, and other species. Figure 5-3 illustrates general habitat areas for these species.

c. Shellfish

For shellfish, the projections of future climate change impacts on their life cycles and habitat are troubling. Factors such as water temperature and water quality, including potential acidification of marine waters, will be critical to future shellfish health. Shellfish may be vulnerable to diseases which become more prevalent as water temperatures rise. Impacts of this are believed to be involved in recent major mortality of young bivalves, known as spat (Cheney and Dewey 2009).

Increasing acidification of the ocean is already cited by some scientists as a possible factor in the decline of shellfish populations along the Pacific coast since 2002, some of which have declined by up to 80%.¹⁴ Increased CO₂ concentrations in marine waters create conditions that contribute to lower pH levels, resulting in increased acidification. Populations most at risk are those with calcium carbonate shells, such as oysters and clams, since increasing acidification disrupts shell formation (Guinotte and Fabry, 2008). Should the pH level of local marine waters decline, local shellfish populations could likewise be at risk. Water quality sampling of marine waters by the Tribe during the 2008 tribal canoe journey (Appendix 5) indicated varying pH levels at different locations, but there is not yet sufficient data or analysis from which to draw conclusions.

Shellfish may also be impacted depending on whether or not habitat areas and water depth can be maintained by migrating landward as the sea rises. As indicated above, steeper bluffs adjacent to some areas containing shellfish beds will limit the ability to migrate, such as along Similk Bay. Tribal members have a long history of harvesting shellfish in beds on and adjacent to the Reservation. Access to these and other shellfish beds harvested by the Tribe may become more restricted as existing beds become situated in deeper water and eventually less accessible even at low tide. Crab populations may additionally be impacted by the loss of estuarine wetland habitat that serves as critical nurseries. Ultimately, the combination of the above impacts may be such that viability of shellfish populations, as well as the long tradition of shellfish harvesting by Tribal members, could be in jeopardy. Figure 5-3 illustrates general location of shellfish beds in the vicinity of the Reservation.

d. Shorebirds

Shorebirds will be impacted to some degree by loss of beaches and some tidal flats where they commonly forage. An important component of their food is the eggs of forage fish which will be heavily impacted from the loss of estuarine beaches.

¹⁴ Welch C. (2009) "Oysters in deep trouble: Is Pacific Ocean's chemistry killing sea life?" Seattle Times, June 15, 2009.

e. Waterfowl

Impacts from loss of marshes and other wetland habitat types may be especially significant on the large wintering populations of waterfowl in the region. Impact on individual species may vary, as some are more dependent on fresh and estuarine habitats, others on tidelands. Diving ducks may be especially at risk, including canvasbacks, scaups, goldeneyes, and bufflehead. Figure 5-3 illustrates general waterfowl areas in the vicinity of the Reservation.

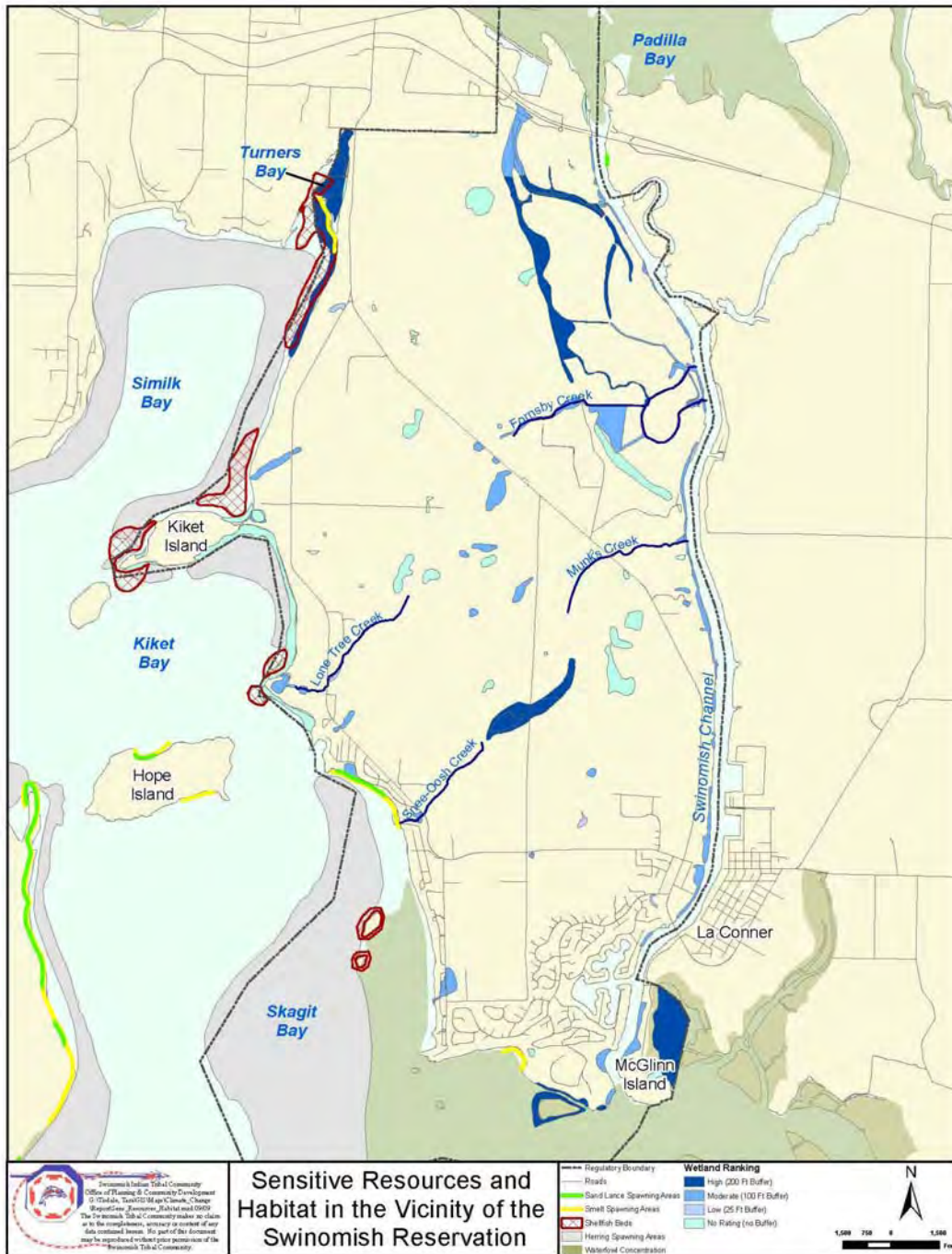


Figure 5-3. Sensitive Resources and Habitat within the Swinomish Indian Reservation.

f. Upland Wildlife

Impacts to upland species from climate change are expected to be related to changes in precipitation patterns, frequency of wildfires, changes in food sources and habitat, and other factors affecting viability. Although the Tribe has begun assessment of upland habitat in recent years, updated information on habitat characteristics and species is not yet available and determination of impacts rests largely on survey of archival records.

Representative upland bird species include hawks, falcons, and eagles. Bald Eagles and Peregrine Falcons roost and nest on the northern upland area and on Deadman and Ika Islands, among other Reservation areas. Other upland birds include owls, woodpeckers, swifts, perching birds, and pigeons. The shorelines and nearshore areas of the reservation provide habitat for a variety of marine birds, herons, waterfowl, and shorebirds as discussed elsewhere in this report. The Reservation lies close to the path of the Pacific Flyway, which hosts migrations of approximately 100,000 waterfowl annually. This includes dozens of species, including the Black brant, which gather by the tens of thousands in April to prepare for their northward migration. Among the species that nest on or near the Reservation is the Great Blue Heron, with rookeries of various sizes at given locations in the Reservation vicinity. Terrestrial mammals observed on the Reservation include black-tailed deer, bobcat, cougar, coyote, red fox, rabbit, raccoon, porcupine, bats, shrews, and numerous other small mammals.

5.2.4 Water Resources

a. Freshwater

Projections of climate change impacts on precipitation patterns and trends are complex and varied and contain a large degree of uncertainty, left unresolved by seasonal variations, natural variability in weather cycles, and other factors. On average, climate models project an overall long-term trend toward higher winter flows and lower summer flows, as well as a potential increase in intensity of isolated peak winter storm events, although it is difficult to predict precisely the net difference from current conditions.

Based on the general consensus of projections, though, it can be anticipated that increases in winter temperatures and the intensity of precipitation events may produce more runoff during winter months, and potentially more flooding. The general trend toward higher winter temperatures may reduce average snowpack accumulation, especially in drainages transitioning from snow dominant to rain dominant characteristics (WA DOE 2006, CIG 2009). During summer, the anticipated trend is toward decreasing and precipitation, with potentially heightened and/or prolonged periods of drought or reduced precipitation. The projected general decrease in precipitation during summer can be expected to reduce associated summertime runoff, causing reductions in in-stream flows and increases in summertime stream temperatures. Regional data indicates a trend toward declining northwest river flows during summer over the last several decades (WA DOE, 2006); relation of this decline to either climate change or natural variability is uncertain, however. For the four streams located on the Reservation (Figure 5-3), this may mean a long-term trend toward lower and potentially more intermittent flows in the summertime.

Implications of possible reduced summer flows for rivers that currently provide freshwater sources for public water supply are discussed under section 5.3.3. On-Reservation public water supplies are acquired from the City of Anacortes, which appropriates water from the Skagit River; if flows for the Skagit River follow the overall trend toward declining summer flows,

availability and allocation of such reduced flows will no doubt become increasingly critical, when demand for surface water and ecosystems needs are at their seasonal peak.

b. Groundwater

Groundwater resources within the Swinomish Reservation are generally characterized by underlying aquifers which are presumed to have some degree of connectivity to or influence from adjacent marine waters around the perimeter. Studies of Reservation groundwater characteristics are ongoing, but some evidence exists of salt water intrusion in wells near shoreline areas. Such intrusion may be expected to increase as marine water levels rise, increasing the potential for increased influence on upland water supply wells.

While the Tribe, through the Swinomish Utility Authority, currently purchases much of its public water supply from the City of Anacortes, which appropriates water from the Skagit River, Tribally-owned Reservation wells are an important component of the Tribe's Water Supply Plan. To the extent that salt water intrusion increasingly impacts wells within the Reservation and/or availability of off-Reservation water supply is reduced due to declining river flow, reliance and pressure on Reservation groundwater supplies may be expected to increase. This may ultimately result in increased demand on a diminished resource, creating additional potential impacts on groundwater through added drawdown.

Conversely, increased salt water intrusion could potentially increase demand for connection to the Tribal public water system supplied primarily by the City of Anacortes, if such connections are feasible and able to be supplied through existing capacity. To the extent that increased connection to the public water supply reduces demand on groundwater supply, impacts from additional or excessive drawdown would be reduced accordingly.

An additional complicating factor in the above scenarios would be reduced recharge to aquifers within the Reservation. Should overall precipitation and/or hydrologically connected surface flows decline, aquifers would be deprived of needed recharge, further constraining this limited resource.

c. Wetlands

Wetlands of various types will be impacted and need to transition or migrate. In general, freshwater tidal marshes and brackish marshes will be subject to greater inundation, and occasional storm surges may introduce greater salinity into the systems. These estuarine marshes are especially productive, with great importance as nursery areas for a sea life, from juvenile salmon to crabs and a host of other species. Salt marshes and transitional marshes may increase in area at the expense of estuarine marshes, especially where shoreward migration is blocked by armoring.

Upland wetlands with connectivity to freshwater or groundwater sources will likely experience impacts similar to those sources; if quantity or supply declines, associated wetlands can be expected to decline, and if quality is changed or impacted, whether through salinity or other factors, wetlands may undergo transition commensurate to the changes in quality. Such impacts would have associated ramifications for any wetlands-dependent species of flora or fauna. Figure 5-3 illustrates wetlands identified within the Reservation.

5.2.5 Forest Resources

There are approximately 4,700 acres of forested land within the Swinomish Reservation, including areas designated as Forestry and forested areas within the Rural Residential zone. A review of the impact assessment matrix reveals that forested areas are projected to incur a number of probable and potentially significant impacts, some sooner than others. Impacts identified in section 5.1 that would affect forests include the following:

a. Urban/Forest Interface

Forested areas cover the majority of Reservation uplands, while developed areas primarily lie within southeastern, southern, and west shore areas, although some scattered pockets of homes and homesites exist in interior uplands. While the coastal climate of the Reservation may not generally be as conducive to wildfire as drier climate zones, with few wildfires in the Reservation in past years, wildfire poses a potential future risk to those who live or work adjacent to the forest. As for the forest habitat, fires are a natural part of the ecosystem turnover process. However, fires in the Swinomish forests are expected to increase as drier, warmer summers lead to lower soil moisture and greater evapotranspiration. When these summer conditions are combined with wetter, warmer winters, which could promote greater tree growth and fuel load accumulation, forests may become primed for larger and potentially more intense wildfires (Littell and McKenzie 2009). While the entire Reservation could be considered at risk of wildfire due to the extent of forestation, the urban/forest interface zones are considered to be at greatest risk due to the number and proximity of structures and greater potential for human-caused ignition. For the purpose of risk evaluation and response strategy implementation, therefore, these areas were designated primary wildfire risk zones. Figure 6-4 in Section 6 identifies the wildfire risk zone throughout the Reservation. The zone includes areas with a variety of residential densities, including urban and rural densities where the mix with forest stands was deemed significant.

Large, destructive wildfires in the early part of the 20th century prompted changes in forest management and fire suppression practices that in recent decades significantly reduced the number and size of wildfires. In spite of this, however, the National Interagency Fire Center (NIFC) reports that since about 1999 the size and frequency of wildfires increased dramatically; from 1960 through 1998 an average of 3 million acres burned annually nationwide, whereas since 1999 that average has increased to almost 7 million acres annually, with the last three years each averaging approximately 9 million acres.¹⁵ While these same fire suppression activities have been cited as one possible reason for this, the documented increase in average temperatures during this time and associated decrease in forest moisture content, combined with past management practices, create ideal conditions and potential for highly destructive wildfire. Coupled with the spread of development into forested areas, the result in numerous cases has been destruction of hundreds of homes and structures and hundreds of thousands of acres burned.¹⁶ The trend back toward large, destructive wildfires signals a growing threat for communities in or near forested areas, and the impact of such fires has been disastrous not only to property owners but also to the

¹⁵ NIFC fire statistics, 2008, http://www.nifc.org/fire_main/fire_statistics.html.

¹⁶ NIFC, 2008. Significant fires by year and state during the past ten years include (K=1,000's of acres): 1998, FL, 200K; 1999, NV, 288K; 2002, CO, 136K & 600 structures lost; 2002, AZ, 467K & 462 structures lost; 2002, OR, 500K; 2003, CA, 275K & 2400 structures lost; 2004, AK, 6.4 million acres (1.3 million in one complex); 2005, AZ, 248K; 2006, TX, 907K & 80 structures lost; 2007, GA, 388K; 2007, ID, 652K; 2008, CA, 1000 structures lost.

ability of forests to recover. Even fire-resistant species such as ponderosa pine have suffered total destruction, and in many cases the forest floor is virtually stripped of all nutrient material required for regeneration.

The advent of proactive efforts such as the Firewise Program has helped to reduce the threat of wildfire to participating owners and communities. Although even the best proactive efforts can be overwhelmed in a large fire event, such programs have proven to be useful and effective. The largest residential area within the Reservation, Shelter Bay Community, a development of approximately 900 homes, became a Firewise Community in 2006 after developing a plan with action items such as clearing excess fuel from its greenbelts and educating residents. The Firewise Communities approach emphasizes community responsibility for planning in the design of a safe community as well as effective emergency response, and individual responsibility for safer home construction and design, landscaping, and maintenance. The national Firewise Communities program is intended to serve as a resource for agencies, tribes, organizations, fire departments, and communities across the U.S. who are working toward a common goal: reduce loss of lives, property, and resources to wildland fire by building and maintaining communities in a way that is compatible with natural surroundings.

b. Forest Species

As average temperatures become warmer and precipitation patterns change, drought-susceptible species such as western red cedar may become less viable, and drought-tolerant species such as Douglas fir may become more dominant. Western red cedar is a culturally important species, having been used in many ways by tribes for centuries. In addition, understory and ground vegetation species may experience similar changes in response to higher temperatures and lower overall moisture content, and losses of these forest plants will likely include other culturally important species. The mix of such species is varied throughout forested areas, and given varying soil and moisture conditions, along with varying microclimate conditions, the type and rate of transition will not likely be the same throughout the Reservation, although the overall trend will be toward transition to drought-tolerant species. Transition away from cedar and other culturally important native plants would represent a significant loss for traditional uses carried on by tribal members.

c. Forest Insects and Diseases

Over the past decade, warmer temperatures persisting for longer periods annually have elevated the susceptibility of conifers to mountain pine beetle outbreaks (Littell et al 2009). Projections of future higher average annual temperatures will increasingly create conditions for enhancing the viability of forest insects and disease vectors, such as the mountain pine beetle, spruce budworm, and various forms of fungi. Generally warmer, drier summers increase water stress in trees, lowering their resistance to infestation. While most infestations are usually found in drier climate forests, such as east of the Cascade crest, the potential for outbreaks in west slope conifer and hardwood forests cannot be discounted. Likewise, certain fungi and arboreal diseases that would not normally thrive in slightly colder climatic conditions are now beginning to emerge with greater vigor. Combined with impacts from wildfire, the cumulative synergistic effects on forest species could potentially be much greater and may cause wide devastation, as seen in some areas of the northwest and the continent. Cumulative impacts from insects, disease, and fire may lead to “disease decline syndrome” in which large forested areas may suffer, even where individual trees may be initially healthy.

5.2.6 Air Quality

a. Effects of increasing temperature on the physical properties of air quality

Results of studies and modeling indicate that climate change will negatively impact air quality on the Swinomish Reservation based on several factors. The Reservation is down wind from the March's and Cherry Points Industrial areas. It also appears that the new Sierra Pacific Lumber mill wood boiler may be in part responsible for the high nitrogen dioxide (NO₂) that have been measured on the Swinomish Reservation. If NO₂ concentrations remain at their current levels or increase, this region will be in non-attainment with the EPA proposed new NO₂ standard (80 to 100 ppb 8-hour average). Ozone, a regional air pollutant, has also been trending upwards, periodically exceeding national standards. The trends indicate that the area could be in non-attainment for ozone as well as NO_x. The reservation will likely be exposed to higher levels of air toxics as well from the four refineries to the north of the Reservation

b. Ozone

Ozone also will likely increase in the future due to temperature increases. The highest ozone episodes generally occur during late spring and summer months on the warmest sunny days. One of the reasons is increased biogenic¹⁷ emissions on hot days. Natural sources of volatile organic compounds (VOC), such as coniferous forests, produce more on hot days. The rate of ozone synthesis from its precursors increases with increasing temperature (Zeng et al 2008). So, with hotter temperatures both more VOCs are produced and the rate of ozone synthesis from them is increased.

c. Effects of increasing temperature on the chemical properties of air quality

Air pollutants are deposited on the earth's surface in two forms: dry and wet. In the future, it is expected that dry deposition will increase due to the lack of precipitation. Gaseous pollutants will not get washed out close to the source and may have more impacts farther away from sources such as the March's Point industrial area. Wet deposition will decrease with increasing temperature. The number of precipitation events in the future is likely to decline. However, when precipitation events do occur, they will probably have relatively higher ionic (acidic) concentration due to less frequent opportunities to be diluted by heavy rains. Increased winter temperatures may result in an increased frequency of temperature inversions that cause ground level fog (Iacobellis, S.F and others 2009). Fog is up to forty times more acidic than water. Extremely high ammonium and sulfate concentrations were found in a 2003 fog water deposition study on the Reservation. The effects of acidic deposition can influence human health through several methods. Toxic metals can be released to the environment through acidification of soils, and end up in drinking water, crops, fish and eventual ingested by humans. Increased concentrations of sulfur dioxide and oxides of nitrogen have been correlated to increased hospital admissions for respiratory illness.

d. Respiratory disease

The relatively high NO₂ and ozone have shown to adversely impact sensitive asthmatics, and may in part be responsible for the high prevalence of asthma on the Reservation. These impacts may be exacerbated with higher temperatures and climate change.

¹⁷ A **biogenic substance** is a substance produced by life processes. It may be either constituents or secretions of plants or animals.

5.3 Human Systems

5.3.1 Land Uses

a. *Housing/Residential Development*

Much of the residential housing and buildable platted lots within the Reservation are in upland and shoreline areas in the southeast, south, and west shore perimeter. A significant number of properties are subject to one or more potential impacts, as identified below.

(1) Increasing tidal inundation from gradual sea level rise and higher tides: Increasing sea levels could potentially inundate a number of housing units and undeveloped residential lots. The risk of inundation for existing housing units would require either relocation to other property or protection for existing property to avoid financial loss from property damage. The impact extent of increasing tidal inundation for the risk analyses used in this assessment are units and buildable lots that are within five vertical feet of the current Mean Higher High Water mark (MHHW). The estimated time frame for these impacts is long-term and increases in proportion to rising sea level.

(2) Storm/tidal surge flooding: A local storm/ tidal surge in 2006 flooded low-lying areas around the southern and western portion of the Reservation and La Conner and demonstrated vulnerability of this area to extreme weather events. Future sea level rise when combined with tidal storm surges will increase the impacts of flooding and its associated effects. Severe storm surges can push debris and water into residential homes and possibly damage housing units. This event could force residents to evacuate their homes and cause major destruction to housing units, resulting in loss of home and/or financial loss from property damage. Areas most likely to be affected are gently sloping shoreline areas, or where surge tops bank, seawall, and dikes. The impact extent of storm and tidal surge flooding are units and buildable lots that are within eight vertical feet of the MHHW for the analysis used in this study. The estimated timeframe for these impacts is near term potential.

(3) Bank erosion: Erosion of banks in the vicinity of structures may increase in certain areas from frequent, intense storm events and sea level rise as they occur. Increased soil saturation and undermined slope stability will destabilize banks, potentially decreasing their structural stability and increasing structure maintenance and cost. Areas that are most likely to be impacted are lots with shoreline banks steeper than a 3:1 ratio (slope height to slope length). The estimated timeframe for these impacts is long-term, but the rate of impact accelerates as flooding increases over time.

(4) Increased wildfire risk: Gradual increase in temperature, as a result of climate change, will create drier vegetation conditions from exposure to higher temperatures over a longer period of time. Drier conditions will increase the risk of wildfire, particularly in the urban/forest interface zone. Increased residential development within densely forested areas creates a significant fire risk, as forests are replaced with smaller vegetation allowing more sunlight to dry soils and accumulated fuel loads. The increased risk of wildfires to housing structures can result in resident evacuations and loss of property values. The impact extent of increased wildfire risk to residential areas is structures that are within or bordering the urban/forest interface zone. The timeframe for this occurrence is near-term and the likelihood of wildfires will increase over the long-term.

b. Commercial/Non-Residential Development

Commercial, industrial, and other non-residential development within the Swinomish Reservation is very limited, and as with other development, tends to occupy outlying areas of the Reservation. The primary center of commercial development is on the north end of the Reservation in the main Tribal Economic District, in which the Tribe's casino, gas station, RV park, and wastewater treatment plant are located. These facilities are built upon previously placed higher fill somewhat greater than 10 feet above current mean sea level, well above existing tidal influence. Low-lying areas on the north end in general, including agricultural areas to the south of the Economic District, are also ringed by a dike system generally sufficient to protect against tidal influence up to approximately 11 feet. A few other commercial operations are scattered at various locations along shorelines within the Reservation. These currently include Dunlap Towing along the west side of the Swinomish Channel, Thousand Trails campground facility at Lone Tree Point on the west shore, Hope Island Inn north of Snee-Oosh beach on the west shore, and Latitude Marine on McGlenn Island. Remaining non-residential development consists primarily of Tribal governmental offices and facilities, located in and around Swinomish Village.

Assessment of potential impacts on these facilities indicates possibility of impacts similar to those on residential structures, as detailed below:

(1) Increasing tidal inundation from gradual sea level rise and higher tides: Increasing sea levels have the potential to inundate certain facilities and suitable development areas in low-lying areas. Threatened inundation of existing facilities and lands would force action to either relocate economic development facilities and opportunities to other property or protect existing property. The impact extent of increasing tidal inundation for risk purposes are facilities and development property within five vertical feet of the current Mean Higher High Water mark (MHHW). The estimated time frame for these impacts is increasing to long-term in proportion to increased sea level rise.

(2) Storm/tidal surge flooding: Future sea level rise when combined with tidal storm surges will increase the impacts of flooding and its associated effects. Severe storm surges can push debris and water into facilities, resulting in financial loss from property damage. Areas most likely to be affected are gently sloping shoreline areas, or where surge tops bank, seawall, and dikes. The impact extents of storm and tidal surge flooding are facilities and development property within eight vertical feet of the MHHW. The estimated time frames for these impacts have a near term potential.

(3) Bank erosion: Erosion of banks in the vicinity of facilities may increase in certain areas from frequent, intense storm events as they occur. Increased soil saturation and undermined slope stability will destabilize banks, potentially decreasing structural stability and increasing structure maintenance and cost. Areas that are most likely to be impacted are lots with shoreline banks steeper than a 3:1 ratio. The estimated time frame for these impacts is increasing to long-term as flooding becomes more prevalent.

(4) Increased wildfire risk: Gradual increase in temperature, as a result of climate change, will create drier vegetation conditions from exposure to higher temperatures over a longer period of time. Drier conditions will increase the risk of wildfire, particularly in the urban/forest interface zone. Increased facility development within densely forested areas creates a significant fire risk. The impact extent of increased wildfire risk to residential areas is structures that are within or border the urban/forest interface zone. The timeframe for this occurrence is near-term and will increase over the long-term.

c. Stormwater Management

While climate models do not indicate a trend toward higher average annual precipitation, most models from IPCC's 4th Assessment agree that precipitation will increase during the winter seasons. This increase in precipitation is attributable to the northward shift and intensification of the Pacific storm track (Salathé 2006), pointing to a higher intensity and frequency of rain events in the Pacific Northwest (Tebaldi 2006). Increased intensity of the 24-hour design storm has been recorded over the last 50 years in some locations of western Washington (Rosenberg et al. 2009), however the links to climate change have not been verified. Regardless of the links to climate change, modeling and design for stormwater management may need to take this observed shift into account for future planning, likely leading to higher peak capacity stormwater systems. It is unclear whether higher capacity stormwater structures or designs are compatible with the environmental goals of Low Impact Development techniques for stormwater management. Low Impact Development techniques include methods to infiltrate stormwater near where it occurs.

With sea level rise some stormwater outfalls will be inundated and may need to be replaced at higher locations. This may also result in some systems being completely redesigned. For example, the outfall on Snee-Oosh beach collects runoff from a portion of Hope Island community and the county road in a freshwater wetland behind a rip rap dike before discharging it to the beach via a pipe through the dike. Residence and settling time in the freshwater wetland is intended to improve the water quality of the discharge. If the dike is breached and the wetland is inundated, this "finishing" function is eliminated and stormwater is essentially discharged directly to estuarine waters.

Additionally, heavy precipitation from more frequent intense storms could overwhelm drainage channels and create debris torrents that would block road culverts, resulting in overflow onto roadways and adjacent property and blocking critical fish passage through such culverts. Such blockages and overflow could cause significant damage to roadways and property from erosion potentially blowing out bridges.

d. Hazardous Sites

It is important to protect sites that are potential sources of toxic contamination from inundation or surges. As with other flood events, this can serve as a major pathway for resource contamination by toxic or hazardous materials. Any building or facilities within inundation risk zones should have hazardous materials removed and storage of such materials prohibited. New hazardous material (hazmat) collection and temporary storage sites should be located outside the inundation or surge risk zones. Currently, there are two sites with known or potentially hazardous materials located within these risk zones, one on McGlenn Island near an existing boat repair facility and one just north of SR20 near the west side of the Swinomish Channel at a former lime storage site. Several additional sites exist in the risk zones but are characterized by minimally hazardous materials and are scheduled for clean-up in the short-term future.

Adjacent to the Reservation's northwest corner is an abandoned County landfill site (the Whitmarsh dump site) where solid waste and material from the nearby refineries were dumped onto the tidelands over a number of years. The Tribe suspects that the site may be leaking toxic contamination into tidelands both on and off the Reservation. Studies have indicated elevated levels of PAHs (polycyclic aromatic hydrocarbons) and other contaminants in the vicinity of the site.

As noted in the discussion on Padilla Bay, this area will be subject to gradually rising sea levels as well as higher storm and tidal surges. The risk of leaking of toxic contaminants into Reservation tidelands would likely increase with a higher water table and overtopping of any protective barriers. While this site is being studied by the Washington Department of Ecology (DOE) for cleanup, proposed clean-up plans do not yet consider the increased risk to of sea level rise. If the site is capped or other actions taken to prevent further leaking of contaminants, proper planning to accommodate issues with sea level rise and tidal surges will need to occur.

e. Agriculture

Agricultural lands south of SR20 on the north end of the Reservation are protected by dikes and tide gates along the Swinomish Channel. With sea level rise, drainage will become increasingly difficult and costly as stormwater runoff will have to be pumped over the dikes rather than discharged through tide gates. Salinization and high water tables will also become an increasing problem for agricultural use of these areas.

Tidal surges may eventually overtop the dikes, unless they are raised substantially, and inundation of the area from sea level rise will follow. Agricultural lands and freshwater wetlands would then revert back to more saline or brackish habitats, as existed prior to conversion to agricultural use. Given the length of dikes currently required to protect these agricultural lands and the height to which dikes would have to be raised even for modest future protection, such diking work could prove to be prohibitively expensive for what might ultimately be a temporary fix. Lacking the means or political will to undertake such diking extension, agricultural lands and uses, being the only such within the Reservation, could entirely disappear, along with lease revenues currently generated by such uses.

Alternatively, a planned transition of the area may allow a more targeted transition to productive habitats. Additional study will need to be made to determine how to use breaches in the dike system to inundate areas of the agricultural lands along with other restoration work to gain optimal habitats in this area. Freshwater marsh will still be lost, but potential for restoration of brackish marshes and swamps may be facilitated by planned breaches and gradual transition rather than waiting for unplanned dike failures or waiting until sea level rise would make it difficult for habitat restoration.

f. Recreation

Officially designated recreational sites and facilities within the Swinomish Reservation are few, primarily being limited to a few isolated sites at specific locations on surrounding shorelines. Martha's Beach, on the south end of the Reservation, is maintained by the Shelter Bay Community, operating under lease from the Tribe, and is used primarily by Shelter Bay residents. The Thousand Trails campground facility, also operating under lease from the Tribe and located at Lone Tree Point on the west shore, contains upper beaches used by Thousand Trails members, and these upper beaches are also used for Tribal activities, and by tribal members accessing lower tidelands.

With very few exceptions, the tidelands surrounding the Reservation are owned by the Tribe, and Tribal members access tidelands and shoreline areas for shellfish harvest and related activities (see Section 5.2.3 for discussion of activities such as shellfish harvest). A boat launch exists at Sneer-Oosh Beach and other private docks or launches exist at certain other locations on Reservation shorelines (outside of the Tribe's fishing docks across from La Conner), but these few isolated docks and launches may not be available for public use.

Such shoreline areas, as described above, are expected to be subject to increasing inundation as sea levels rise, as well as potential storm/tidal surge events, with consequent effects on extent of usable beach and tideland areas.

5.3.2 Cultural Resources and Traditions

In the broadest sense, Swinomish cultural resources are inseparable from the natural and human resources described in this paper. This section focuses on the potential impacts to tribal artifacts and archeology, including traditional village and camp sites. These sites are not limited to those within Reservation boundaries, but include the Tribe's traditional fishing, hunting, and gathering areas in the wider region. They are a vital link between the Swinomish heritage and its present and future prosperity.

A number of traditional village sites and camps within Reservation boundaries could face inundation due to the combined effects of sea level rise, increased wave action, destructive storm surges and increased erosion. Sites such as Qaliqet, Tosi, SDEEos, Lone Tree, near Eagles Nest, and others will be jeopardized within a few decades. The existing village (Twiwok) should remain above expected inundation levels, but may experience damage from storm surges.

Increased exposure of cultural archeological and cultural/societal artifacts and ancestral burial sites/human remains could occur throughout the coastal area. Because the Swinomish tribal members are marine-oriented, the majority of archeological sites tend to occur in shoreline areas, such that unintended exposure could significantly increase the potential for desecration and/or disturbance. At the same time, there could be increased pressure to conduct archeological excavations before sites are inundated, an action the Tribe generally opposes.

These potential impacts point to the need for continued vigilance on protection of cultural resources and for improved communication with neighboring jurisdictions on the requirements under Tribal, state and federal laws to protect on-site ancestral burial sites, human remains, and archaeological artifacts during private and public construction activities. RCW 27.44, the Indian Graves Record Act, provides civil penalties for disturbing any Indian grave and associated artifacts. Additionally, RCW 27.53 protects against disturbing archaeological resources or sites, including resources associated with Indian tribes, without a state permit and provides for criminal penalties for violations. On federal and tribal lands, the applicable law is known as Native American Graves Protection and Repatriation Act (NAGPRA) adopted in 1990 and codified at 25 U.S.C. §§ 3001-3013.

Tribal spiritual and cultural practices and norms emphasize protecting sacred sites and ancestral burial sites from any unnatural disturbance, including construction activities and archeological excavations.

Rising sea level will eventually jeopardize traditional clamming and beach seining activity historically performed on the west shore of the Reservation, for example at Lone Tree Point. As such tideland areas become increasingly inundated, as well as inundated for longer periods of time, the ability to conduct clamming and beach seining in such areas will be reduced, and possibly eliminated, with the result that an important aspect of the Tribe's cultural and historical identity will be further eroded.

5.3.3 Public/Private Utilities

a. Water

Although the Swinomish Utility Authority, as the primary water purveyor on the Reservation, maintains groundwater wells within the Reservation, these wells are currently reserved for emergency or backup water supply source. The Authority currently purchases water from the City of Anacortes as the primary source for public distribution. The Skagit River provides the source of supply for this public water system. This source and system are subject to three types of potential impacts:

(1) Water supply reductions. Should Skagit River flows follow the overall trend toward decline in summer, as documented over the past few decades for the region, allocation of public water among the various users and jurisdictions would become increasingly critical. Reduction and/or sporadic disruptions in summertime supply could impact availability of public water to the Reservation (and other users), forcing rationing measures, increased reliance on groundwater supplies, and/or other solutions.

(2) Increased well salinity. Similarly, increased salinity of groundwater supplies could force increased demand and reliance on other public water supplies.

(3) Impacts to treatment facilities. A third impact could result from inundation or other disruption of the treatment facility, with associated impacts on supply and distribution, although the potential for such disruption has not been assessed.

The Shelter Bay Community, a residential development of more than 900 homes, obtains public water supply via connection through the Town of La Conner. The Authority maintains an intertie with the Shelter Bay Community system through which Tribal supply could presumably be obtained should the Tribe's own supply from the City of Anacortes be reduced or disrupted. Should the Shelter Bay supply be disrupted, however, the ability of the Authority to supply Shelter Bay would be very limited.

While the Authority's service area is the entire Reservation, service does not currently extend to all areas within the Reservation, and private wells along with smaller community systems continue to fill the void. There are currently five small community water systems, two Tribal and three non-Tribal, serving over 170 residential users in such areas, which primarily rely on private wells for their source. The majority of these users are served by the three non-Tribal systems. Certain of these wells have proven to be occasionally unreliable, and future changing conditions will likely only exacerbate existing problems, motivating these community users to seek alternative supplies or connections.

The overall impact to public water supplies from any or all of the above could be potentially significant, although the severity and timeline for such impacts cannot be projected with any certainty. Ongoing monitoring of sources, usage, and changes in conditions will be required to provide as much lead time as possible for determination of any necessary response.

b. Wastewater

Public wastewater treatment facilities for the Reservation vicinity appear to be somewhat less impacted than water systems, at least for the immediate future, although long term prospects are less clear. Treatment for Swinomish Utility Authority customers in the southern portion of the Reservation is contracted through the Town of La Conner, and the treatment facility is located on a slightly higher bench area east of La Conner, on the edge of potential inundation zones. Other facilities currently serving the Reservation include a new state-of-the-art membrane reactor facility on the north end of the Reservation, serving north end development; the Shelter Bay treatment facility near the west foot of the Rainbow Bridge, serving Shelter Bay residences; and a spray lagoon septic system serving Thousand Trails campground. The treatment facility on the north end is within the potential tidal surge risk zone, although potential for impacts may be somewhat lessened by virtue of location. While the Shelter Bay treatment facility is outside of inundation zones, three lift stations in the vicinity of the Shelter Bay marina are within these inundation zones. The Thousand Trails treatment system is well above inundation zones but is inside the wildfire risk zone.

c. Communications

Impacts to communications facilities and lines, i.e., telephone, cable, and cell/wireless services, are expected to be limited to outages caused by severe storm events. A few such events in recent years have caused outages due to downed lines affecting telephone and some cable service. To the extent that severe storm events may increase in frequency and intensity, such outages may also be expected to continue and/or increase. There are two cell towers currently located on the Reservation, and impacts to cell and associated wireless services are expected to be less severe, barring damage to the towers themselves. The Swinomish Police Department maintains emergency communications links to off-Reservation jurisdictions, and the Tribe operates a local access cable station. Each of these may potentially provide backup communications capability during an outage, to the extent they are not impacted.

d. Energy and Power

As with communications, impacts to energy/power resources and supply will largely be as related to severe storm events. Electrical power is supplied to the majority of the Reservation via a single main transmission line from the mainland to the east, as fed through a network of distribution lines, although a small part of the Swinomish Village area receives power through a separate line feed from the La Conner vicinity. Backup energy sources are extremely limited, being largely confined to a few generators serving larger facilities. Storm events in recent years have caused widespread outages on the Reservation to homes and facilities, including a severe storm in November 2006 which caused an outage lasting several days, with many downed lines in various locations on the Reservation. Downed lines and trees also blocked roads throughout the Reservation, making it more difficult for emergency and repair crews to gain access to damage sites, further delaying repair work. Due to prolonged power outages and blockage of access to the Reservation, which occurred during cold winter months, emergency measures were begun to evacuate residents from some areas to community facilities such as the Tribal gymnasium. Evacuations were not supported, however, by advance planning for or stockpiling of emergency supplies of food, clothing, bedding, and such. Since the primary power lines to the majority of the Reservation are above ground, future storm events may be expected to repeat such damage and outages.

As average temperatures continue to increase, it can be expected that demand on summertime energy supplies will increase due to greater use of air conditioning and other means of cooling. Increased summer demand on energy systems and supply may ultimately stress systems and supply to capacity, especially when such demand occurs region-wide as might be the case during prolonged heat events. The result could be rolling brown-outs and/or failure of subsystems, as has occasionally occurred in larger metropolitan areas during extended heat waves. Lack of backup or alternate energy sources would leave the Reservation subject to the impacts of such events.

Alternative energy sources on the Reservation are virtually non-existent, except where small private systems may exist. The Tribe has undertaken a pilot project for development of roof-top solar energy for a single facility, but larger application of solar or other alternate technologies has yet to be developed. Although federal stimulus and other grant funding is becoming more available, issues of cost-effectiveness, feasibility, and ongoing funding support remain major impediments to further development of alternative energy sources.

e. Waste Management

Solid waste disposal for the Reservation is provided through regional collection services, and while Tribal facilities do some limited recycling collection, general “curbside” recycling is currently not implemented within the Reservation. Most impacts of climate change on waste disposal and management are related to potential dispersal and scattering of garbage and waste during tidal surge or other such flooding events, where private or public containers exist in potential inundation zones.

5.3.4 Emergency Services

Increased climate change impacts are expected to place increased demands on public emergency services. These services include emergency response to civil, environmental, and natural emergencies.

a. Police

Increased demand for emergency response during severe storm events, outages, flooding:
The Swinomish Police Department is typically the first responder to general emergencies occurring on the Reservation. The Swinomish Police Department has cooperative agreements with local law enforcement agencies for mutual backup and assistance. Increase of weather related emergencies as a consequence of climate change may add further strain to local police duties and squads. Severe weather events such as windstorms or flooding or emergencies such as power outages or wildfire may place extra burdens on police to take necessary actions, such as shutting off access to dangerous or damaged areas and roads and coordinating evacuation of local homes and businesses. While the Police Department coordinates with a broader network of authorities and responders for response to emergency events as needed, emergency events requiring intensified broader regional response may tax the ability of local authorities to adequately address the needs of local residents. Impact extent will be event-dependent and has the potential to affect the entire Reservation vicinity. The estimated time-frame for these impacts is the near-term increasing to long-term.

b. Fire

Increased demand for emergency response during wildfire, severe storms, outages, flooding: Skagit County Fire District #13 is the local fire agency that serves the Swinomish Reservation. The Fire District's responsibilities include fire suppression, emergency rescue, and emergency response. More frequent and unpredictable emergency events resulting from increased flooding, storms, and wildfires related to climate change impacts may place extra burdens on response crews, which are to a degree dependent upon volunteer services.

The Fire District coordinates with the Washington Department of Natural Resources, Bureau of Indian Affairs, and other agencies/responders as necessary in responding to and controlling wildfire on the Reservation. Given the potentially explosive fire conditions that could occur during heightened and/or prolonged heat waves and the extent of forested areas within the Reservation, including vulnerable urban/forest interface areas, quick and adequate response to wildfire outbreak will be vital to preventing major fire disasters. Increased temperatures resulting in drier conditions will increase the potential for wildfire and associated demand on firefighting facilities and crews. Frequent or larger fire events on or off the Reservation that require intensified or prolonged response may tax budgeted and/or logistical support for firefighting efforts.

Increases in flooding or other types of emergencies may additionally increase the demand on Fire District and volunteer response crews. The impact extent of these various events, including wildfire, is potentially Reservation-wide and is event-dependent. The estimated timeframe for these impacts will be near-term and increasing over longer time periods.

c. Other Emergency Response

Increased demand for assistance/ emergency response during wildfire, severe storm events, outages, flooding: Increased wildfire, flooding, storm, and heat events may require a greater demand on emergency response for health related emergencies. General disaster response organizations include Skagit County Emergency Medical Services, American Red Cross, Federal Emergency Management Agency, and utility repair crews. The closest hospitals near the Reservation are located in Anacortes and Mount Vernon. While the Tribe operates a medical facility for tribal members, there are currently no general emergency medical care facilities located on the Reservation. The impact extent is event-dependent and potentially community-wide. The estimated time-frame for these impacts is increasing to long-term.

5.3.5 Human Health

Following is a synopsis of human-health related issues that may be of concern in relation to climate change. Of particular importance is that many people participate in economic and/or subsistence harvesting and therefore spend more time outdoors than the average American.

Many Native communities, Swinomish included, define health on the community level, not the individual level (c.f., Arquette et al 2002; Swinomish Comprehensive Plan). All aspects of health are important: cultural, social, spiritual, mental, and physiological. Health is defined and prioritized based on a population or community's moral and cultural system (Airhihenbuwa 1995, Garrett 1999, Harris and Harper 1999). Just as the World Health Organization (WHO) defines health as "a state of complete physical, mental, and social well-being and not merely the absence

of disease or infirmity” (WHO 1946), so too do many indigenous groups such as the Swinomish. Further refining the WHO definition, many indigenous communities view health in the following way:

... as the status of ‘being’; how we feel inside ourselves, and how we are seen from the outside, at a cosmic level and in comparison to others. ‘Being’ encompasses the totality of our relationships with ourselves and with all else. Therefore the health of human beings is contained in the nature and relationships to whatever surrounds them; the environment as totality—all there is (Honari 1999).

More information about community health is anticipated from community members during the final phase of this project.

a. *Respiratory diseases*

Fossil fuel combustion is a cause of both local air pollutants (especially particulates, ozone, methane, nitrogen oxides, and sulphur dioxide) and greenhouse gases (GHG’s). It is possible that increasing impacts of GHG’s may combine with local nonpoint source air pollution and local industrial pollution to significantly increase respiratory diseases in the Swinomish Community. Sources of local industrial pollution include two oil refineries near the north end of the Reservation and a large lumber processing mill a few miles to the east. Below are examples of some common respiratory-related problems that may be exacerbated by increased pollution effects.

- **Ozone:** Although more of an issue in concentrated city areas, increased ozone from fossil fuel combustion may also become an issue locally.
- **Asthma:** Some research suggests that there is a link to increasing asthma rates globally and climate change (e.g., Beggs and Bambrick 2005). Local asthma rates are higher than the national average and increasing air pollution may worsen the problem.
- **Aeroallergens:** Milder, longer growing seasons may increase the presence of aeroallergens such as pollen. These allergens may in turn exacerbate other respiratory illnesses such as asthma.

b. *Heat-related illnesses*

Increasing temperatures and intensity and duration of summer heat waves may increase the occurrence of heat-related illnesses such as heat exhaustion, heat stroke, and cardiac arrest. These issues are of particular concern for the many community members who are elderly, in poor health initially, or participate in economic and subsistence harvesting or other outdoor activities. Prolonged episodes of intense heat may result in widespread heat exhaustion among the local population where sufficient relief cannot be obtained, with associated effects of sleeplessness, fatigue, dizziness, loss of appetite, nausea, and dehydration. Prolonged heat exhaustion may lead to higher incidence of heat stroke, a serious and potentially deadly condition. Proper education about preventative measures is required.

c. *Drowning*

Research from the Climate Impact Group projects that increases in severe weather events that cause coastal storm surges and flooding are probable. Because many Swinomish fishermen spend time on the Skagit River, the regional bays and in the open ocean, drowning is of concern. Emergency preparedness and sufficient public education are required.

d. Vector-borne diseases

Most vector-borne diseases exhibit a distinct seasonal pattern, which clearly suggests that they are weather sensitive. Rainfall, temperature, and other weather variables affect in many ways both the vectors and the pathogens they transmit. For example, high temperatures can increase or reduce survival rate, depending on the vector, its behavior, ecology, and many other factors. Thus, the probability of transmission may or may not be increased by higher temperatures (Gubler et al 2001). The following are some examples of vector-borne diseases that are currently present in the PNW, or may become so with increasing temperatures and longer warmer seasons.

It is unlikely that these diseases will cause major epidemics in the United States if the public health infrastructure is maintained and improved (Gubler et al 2001).

Lyme disease: In the Pacific Northwest, the disease is spread by the western black-legged tick. The chances of being bitten by a tick are greatest during times of the year when ticks are most active. Deer ticks in the nymph stage are active from mid-May to mid-August. Adult ticks are most active in mid- to late fall and early spring (DHPE 2009). With less cold periods in the winter and longer warmer seasons, ticks may become more prevalent. A Lyme disease vaccine is under development but is not yet available. The only sure way to prevent the disease is to avoid exposure to infected ticks, which means to curtail time outdoors. Yet many tribal members spend time outdoors for economic and subsistence activities and cannot curtail these activities. Mosquito-borne diseases, such as dengue fever, show strong seasonal patterns; transmission is highest in the months of heavy rainfall and humidity (Patz 2002). Currently dengue occurs in most tropical areas of the world. Most U.S. cases occur in travelers returning from abroad, but the dengue risk is increasing for persons living along the Texas-Mexico border and in other parts of the southern United States (DHPE 2009). However, with increasing warming periods, these diseases may appear in the PNW.

The link between malaria and extreme climatic episodes has long been the subject of study in the Indian subcontinent. Historical analyses have shown that the risk of a malaria epidemic is increased approximately fivefold during the year after an El Niño in this region (Bouma and van der Kaay 1994). The potential also exists for malaria to become re-established in the United States. Currently, about 1,200 malaria cases are reported each year in the United States. Almost all occur in persons who were infected in other parts of the world (imported malaria). Small outbreaks of non-imported malaria, the result of transmission from imported cases, have also been reported. So far, the outbreaks have been quickly and easily contained. A continued increase in drug-resistant malaria throughout the world, however, could increase the number of cases of imported malaria and improve the chances for malaria to re-emerge in the United States (DHPE 2009).

West Nile virus, hantavirus and other vector-borne diseases may also increase in prevalence in the PNW with longer warmer seasons and less severe winters, increasing vector survival. It is unlikely that these diseases will cause major epidemics in the United States if the public health infrastructure is maintained and improved (Gubler et al 2001).

e. Enteric diseases

Bacterial and viral infections of the gastrointestinal tract account for a greatly underappreciated burden of morbidity and mortality. The enteric pathogens cause disease symptoms ranging from mild gastroenteritis to life-threatening systemic infections and severe dehydrating diarrhea. Many

of these categories of diseases have been demonstrated to correlate with particular seasonal and/or weather patterns (Patz 2002).

Rotavirus: (as an example of an enteric disease currently affecting the US population) In the United States, rotavirus causes about 2.7 million cases of severe gastroenteritis in children, almost 60,000 hospitalizations, and around 37 deaths each year (Fischer 2007). Rotavirus affects primarily children; reported cases peak in the winter (Colwell and Patz 1998). Public health campaigns to combat rotavirus focus on providing oral rehydration therapy for infected children and vaccination to prevent the disease (Diggle 2007). Well functioning health clinics and more information about vaccination will aid in deterring additional cases of rotavirus.

Cholera: There is a biological basis for a link between sea surface temperature (SST), marine ecology, and human cholera (Colwell 1996). Copepods (or zooplankton), which feed on algae, serve as reservoirs for *Vibrio cholerae* and other enteric pathogens. This observation may explain why cholera follows seasonal warming of SST that can enhance plankton blooms. *Vibrio* in general is influenced by temperature and salinity (Lipp and Rose 1997), which, along with SST, is consistent with the role played by sea surface height (Lobitz et al 2000). Although once present in North America, cholera is now no longer considered a pressing health threat in Europe and North America due to filtering and chlorination of water supplies. However, if severe precipitation events occur, water supplies can become contaminated, possibly with cholera.

f. Other emerging infectious diseases

There have been some few cases of other emerging infectious diseases reported in the PNW, but no cases reported at Swinomish to date. There is much uncertainty around emerging infectious diseases; funding and resources must be given to local health facilities to maintain the most up-to-date information and track the spread and prevalence of this category of diseases. With proper planning and mitigation, it is hoped that pandemics can be avoided.

Cryptococcus gattii, a fungal pathogen found in air, water, soil and in association with numerous tree species on the Pacific Northwest coast in Washington and British Columbia, is an example of an emerging infectious disease. There is solid evidence for human-mediated dispersal of the pathogen, so continued dispersal is inevitable. Related pathogens are prevalent in tropical and subtropical climates, and more dormant strains are believed to have existed in the Pacific Northwest in a less virulent form. It is not known if the emergence of this disease is caused by climatic changes or is an invasive species dispersed via humans or animals (Bartlett et al 2008).

g. Diseases associated with shellfish and fin fish

Shellfish poisoning is a result of toxic algal blooms, the growth of naturally occurring bacteria and diatoms. There are four types of shellfish poisoning: neurotoxic, paralytic, diarrhetic, and amnesic. With increasing effects of climate change and increased human density in the Puget Sound area, toxic algal blooms may increase in intensity and severity. Additionally, as eating shellfish is an important part of the Swinomish lifestyle, individuals may be inclined to ignore public health advisories against eating shellfish. A disease affecting fin fish that could increase with climate change is *ciguatera*, which is an illness typically associated with tropical fish. Ciguatera is not necessarily associated with toxic algal blooms.

h. Other food-related issues

Due to the importance of traditional foods at Swinomish, forced changes in diet from climate change may have significant negative impacts on health. Below are two possible issues.

Toxic contamination: According to recent research, increases in water temperature resulted in average increases in methyl mercury concentrations of 1.7% and 4.4% for projected ocean warming rates of 0.4°C and 1.0°C, respectively, per century (Booth and Zeller 2005). Since the Washington Department of Health (DOH) has already issued consumption limitations for salmon due to the presence of mercury, and many tribal members typically eat more than the DOH recommended amounts, increased mercury is of concern.

Malnutrition: reduced availability of traditional seafood, due to increased toxic algal blooms, increased seafood mortality, or other factors, may force a greater reliance on nutritionally poor commodity-type foods such as white flour and sugar-based foods.

i. Increased ultraviolet (UV) radiation

Increased UV radiation, resulting from depletion of stratospheric ozone layer, coupled with an increased frequency of extreme temperature events and high summer temperatures, will lead to increase in skin cancers, as more people spend more time outdoors (Diffey 2004). Many Swinomish already spend more time outdoors than the average American due to economic and subsistence fishing and hunting related activities. Although more people may spend more time outdoors with increasing warmer temperatures, temperature is not the primary factor determining whether people currently participate in these activities.

j. Children's health

The relationship between climate and child health has not been well investigated. This review discusses the role of climate change on child health and suggests 3 ways in which this relationship may manifest (Bunyavanich et al 2003).

- Environmental changes associated with anthropogenic greenhouse gases can lead to respiratory diseases, sunburn, melanoma, and immuno-suppression.
- Climate change may directly cause heat stroke, drowning, gastrointestinal diseases (e.g., rotavirus), and psychosocial mal-development (to be touched on with cultural issues)
- Ecologic alterations triggered by climate change can increase rates of malnutrition, allergies and exposure to mycotoxins, vector-borne diseases, and (other) emerging infectious diseases.

Potential issues range from low to high in probability of affecting the Swinomish community within these three categories. Malnutrition, respiratory infections, allergies and immuno-suppression are likely the most pressing issues for Swinomish children.

5.3.6 Transportation

Road integrity and regional accessibility is critical for the Swinomish Reservation since access is dependent on a few key vital road links, all of which are susceptible to potential impacts of climate change. The Reservation, part of Fidalgo Island, is primarily accessible from the east by bridges. These include two SR20 bridges across the north end of the Swinomish Channel and the "Rainbow Bridge" connecting La Conner and the Reservation. To the west is the larger portion of Fidalgo Island, which is accessible from the south via Deception Pass Bridge from Whidbey Island, which in turn is accessible from the mainland by the Mukilteo Ferry. In addition to State

Route 20, there are approximately 32 miles of public roads within the Reservation, 12 miles of which are Tribal or BIA roads and 20 miles of which are Skagit County roads (Figure 5-4). The Shelter Bay Community, a residential development of 900 homes, also contains numerous private roads serving that community. Predicted changes from climate change models include potentially increased and extreme precipitation events during winter periods, increasingly drier summers from higher temperatures, and prolonged periods of high temperatures (CIG 2009). Such changes are expected to have a number of different impacts on transportation mobility and facilities.

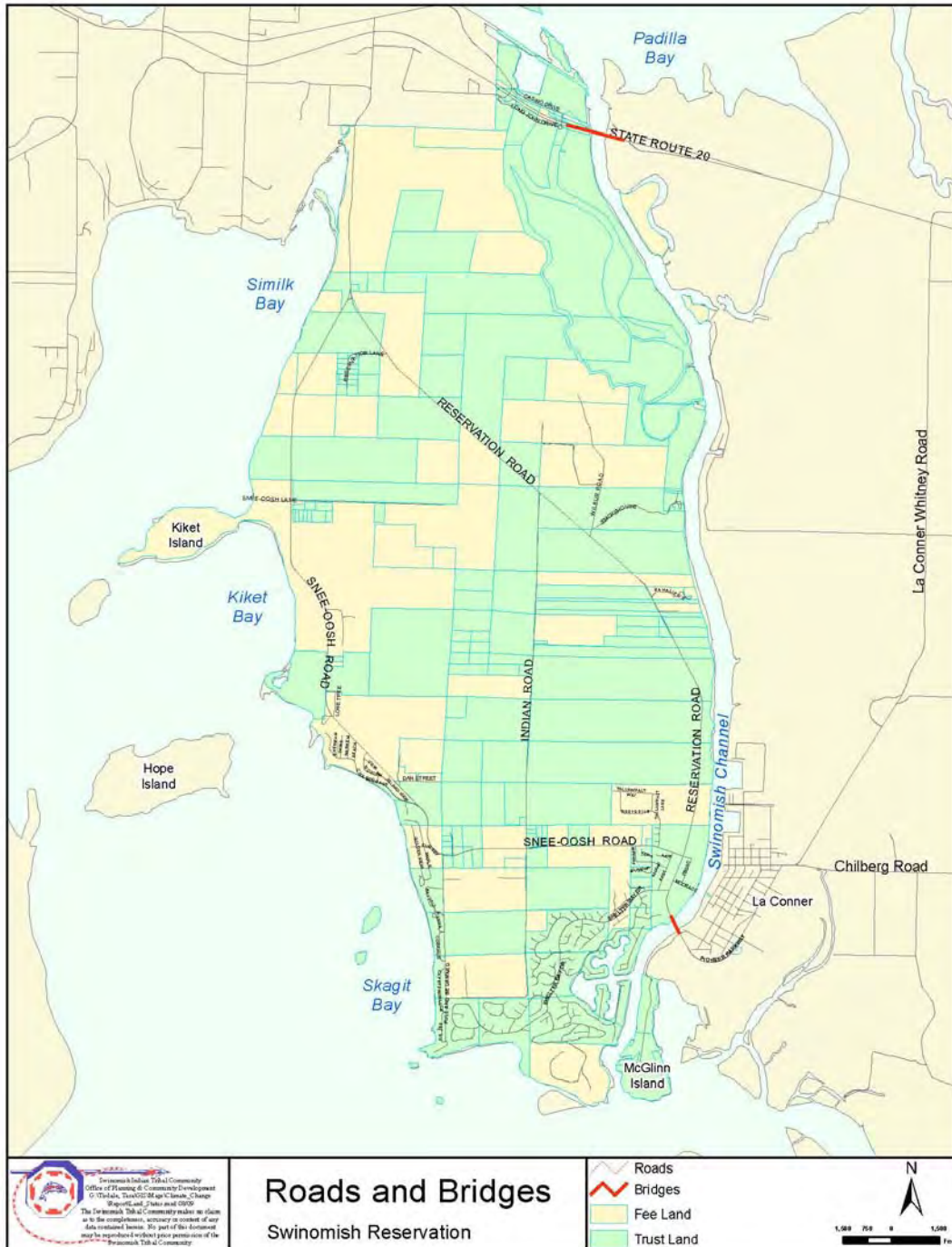


Figure 5-4. Roads and Bridges within the Swinomish Indian Reservation.

a. Road System Integrity

(1) Damage from combined precipitation and temperature increases: Increased precipitation and temperatures lead to premature deterioration of concrete road surfaces as a result of weathering (Wooler 2004). Changes in precipitation will speed up natural processes such as debris flow and rock fall. This increase is a potential road hazard and well as blocking the flow of traffic, creating delays for travelers. This has the immediate potential to affect existing roads where there is slope instability (Andre 2003). The impact extent will be paved and concrete roads. This is a near-term potential. Since many of the roads within the Swinomish Reservation already have pavement that has longitudinal and traverse cracking, as well as grade depression and asphalt bleeding during warmer periods, pavement weathering will increase with increased precipitation and temperature.

(2) Damage from flooding: Intensified flooding events will deteriorate pavement surfaces from loosening of aggregate due to water saturated road base, resulting in subsidence. Heavy precipitation from more frequent intense storms may overwhelm road drainage and create debris torrents blocking drainage channels and culverts, potentially resulting in overflow and significant damage from erosion of roadways. Future sea level rise will further exacerbate potential flooding events when combined with storm surges, reaching further inland (Titus 2008). The impact extent will affect roads that are in close proximity to coastal areas and have an elevation of five feet or less. The timeframe for this occurrence will be increasing to long-term potential.

(3) Damage from intensified heat events: High temperatures warp and deform asphalt that is not designed for intense heat temperatures. Exposure to increased temperatures will amplify buckling, rutting, and bleeding of roads (NRCAA 2008). Warmer summers will shorten road life from pavement softening, creating bucking and bumps, which may create future driving hazards. Extended periods of extreme heat events may result in rapid break-down of asphalt seal binders, damaging the structural integrity of roads and create road hazards by increasing the slipperiness of the road when wet (Hyman et al 2008). The potential impact extent is all paved roads. The estimated timeframe for these impacts is increasing to long-term in proportion to increased temperatures and heat waves.

(4) Erosion of roadways: Pavement/soil erosion and landslides in erosion-prone areas may increase from more frequent intense storm events and sea level rise. The impact extent of this event has the potential to affect earth, gravel, and paved roads on or near sloped areas, as well as roads on coastal areas.

(5) Extended construction season: Increased average annual temperature may result in a longer construction season, providing more opportunities for road repairs and possibly improving cost efficiencies (Andrey, 2003).

b. Access and Circulation

Impacts of climate change will also affect the operational capacity and accessibility for transportation routes and have the potential to directly affect the mobility of people and goods entering and leaving the Swinomish Reservation vicinity.

(1) Inundation of roads from sea level rise: Increasing sea levels have the potential to inundate roads on and leading to the Reservation where such roads are not adequately protected by dikes, or where rising sea levels eventually top dikes. If not protected from such inundation, resulting route closures would disrupt travel and transport of goods to and from the Reservation,

preventing access to services and potentially causing shortages of necessities. Prolonged inundation would result in isolation of the Reservation from the mainland. Potentially impacted areas are those within five feet above MHHW; this would include the two immediate access points to the Reservation, along Maple Avenue in La Conner and on Reservation Road adjacent to Turner's Bay, as well as large areas of farmland east of the Swinomish Channel through which run other access routes to the Reservation. Such disruption of access would also have potentially significant implications for evacuation routes in the event of an emergency or natural disaster.

(2) Inundation of roads from storm/tidal surge: Potentially higher and more frequent storm/tidal surges, such as seen in 2006, may cause temporary and somewhat localized inundation of roads on and leading to the Reservation where such roads are not adequately protected by dikes or where such surges top dikes. Resulting route closures would disrupt travel and transport of goods to and from the Reservation, preventing access to services and potentially causing shortages of necessities. While higher water levels would typically subside after some hours, surge inundation could still result in temporary isolation of the Reservation from the mainland. Potentially impacted areas are those within eight feet above MHHW, which would include all access routes to the Reservation. Such temporary disruption of access would again have potentially significant implications for evacuation routes in the event of an emergency or natural disaster.

(3) Route closures from extreme flooding events: Increasingly intense storm events have the potential to overload existing capacity of culverts and drainage systems, resulting in flooded roadways, directly affecting access and circulation of specific routes. Roads most affected would be those roads with existing drainages that currently experience clogging from garbage and organic material. Also affected would be those roads that currently have undersized culverts lacking capacity for large volume of water flow. Such flooding could result in subsidence and create long-term accessibility issues (NRCNA, 2008).

(4) Route closures from fire: Increase of wildfires due to higher temperatures may create accessibility and circulation issues such as temporary road closures and driving hazards. In potentially extreme circumstances, there may be need for residential evacuations. Roads in or near more heavily forested or vegetated areas have the potential to be the most affected (NRCNA 2008).

(5) Reduced winter maintenance: Reduced annual winter snowfall and warmer winter temperatures will alleviate winter maintenance, reducing snow and ice removal costs. Milder winters will also reduce environmental impacts from the use of salt and chemicals on roads and bridges and improve mobility and safety of passenger and freight travel through reduced winter hazards (NRCNA 2008; Andrey 2003).

c. Bridges

Due to the location of the Reservation, bridges are critical transportation links. The main routes to access the Reservation are over the "Rainbow Bridge" at La Conner and Washington State Route 20 bridges which cross the Swinomish Channel. There are also low-lying bridges to the west of the Reservation that also serve as critical routes.

(1) Erosion of bridge footings: Erosion of bridge footings and supports may occur from higher tides and storm surges. Increased flooding events can cause soil saturation and surface erosion of materials around bridge footings, potentially decreasing their structural stability and increasing maintenance and operational costs (NRCNA 2008). Erosion of bridge footings can also be caused by

scour from increased water flow from flooding and tidal surges, resulting in structural instability. Scour is created when sediment is washed away from the bottom of a river, leaving a hole. This generally happens at any time but is more prominent during floods and increased water flow. This is a concern because if the rock or sediment that a bridge rests on is scoured, particularly local scour¹⁸ can make bridges unsafe for travel because of degradation of structural base support (Warren 1993).

(2) Increased fatigue and deterioration of bridge joints: Increased temperatures create thermal expansion of bridge joints. Bridges are designed to accommodate movement from thermal expansion and contraction. However, significant temperature increases from climate change can exceed standards for the current design, causing it to reach its threshold for thermal expansion (Soo Hoo 2005). With increased and prolonged exposure to heat, parts of the bridge are heated and not allowed to further expand; creating stress to the structure that may either damage the bridge or elements that the bridge is constrained by. This will potentially increase maintenance costs and negatively affect operations.

d. Public Transit

Public transit currently available to the Reservation is a single fixed route bus. The existing route service is being expanded in the fall of 2009 to include additional daily runs and links between the north and south ends of the Reservation. Impacts affecting access, circulation, and road integrity as discussed above could create service disruption.

e. Marine/Port Facilities

Fishing and associated activities are vital to the Swinomish Community, as many tribal members depend on fishing for at least a portion of their livelihood. Access to functional docks and related facilities are important in helping preserve fishing activities. Rising tides from gradual sea level rise may result in dock facilities and access being impaired during extreme high tides; unless dock facilities are raised or otherwise adapted, continued rising tides may ultimately render dock facilities unusable for extended periods of time, hindering fishing and other activities dependent upon such facilities.

Marine transportation is also important to activities on leased tribal lands, such as log transport and recreational boating. Since these facilities are generally located along the shoreline, inundation from increasing sea level rise, as well as flooding from a combination of high tide and a storm surge event has a strong likelihood of occurring. This could result in temporary delays and interruptions of transporting services and destruction of property. Facilities may have to be rebuilt or relocated depending on circumstances. The impact of extent would be the Swinomish Channel and the Shelter Bay Marina.

¹⁸ “Local scour is the removal of sediment from around bridge piers or abutment. (Piers and the pillars supporting a bridge. Abutments are the supports at each end of a bridge.) Water flowing past a pier or abutment may scoop out holes in the sediment; these holes become known as scour holes” (Warren 1993)

6. Vulnerability Assessment

Vulnerability assessment was undertaken in a 3-step process: 1) identification and mapping of impact areas (risk zones); 2) inventory of assets and resources within identified risk zones; and 3) evaluation of impact threshold and exposure (sensitivity and adaptive capacity). The intent of this analysis is to produce quantitative information on impacted assets and resources, along with specific local qualitative projections of impacts, resulting in computed level of impact, or consequence, for given sectors that, when combined with probability projections, will make further risk analysis possible. Mapping of impact areas resulted in three primary risk zones: a sea level rise inundation zone, a tidal surge inundation zone, and a wildfire risk zone. Additional specific impacted areas were mapped as possible for the given sector (e.g., shellfish). Based on such mapping, assets and resources within identified impact risk zones were identified.

Once potentially impacted assets and resources were identified, assessment was made of the degree to which such assets and resources were deemed to be sensitive to identified impacts, based largely on exposure and potential susceptibility to given impacts; rating of high, medium, or low sensitivity was assigned based on the assessment. Similar but reciprocal rated assessment was also made of the extent to which assets and resources could be adapted to prevent or protect against the given impacts, known as adaptive capacity. Sensitivity and adaptive capacity were combined to determine overall vulnerability to impacts, also rated as high, medium, or low. The reciprocal nature of sensitivity and adaptive capacity ratings are such that for high overall vulnerability, high sensitivity corresponds to low adaptive capacity, and conversely for low vulnerability, low sensitivity corresponds to high adaptive capacity. Table 6-1 summarizes vulnerability rating of all sectors for the given impacts identified.

**TABLE 6-1. VULNERABILITY ASSESSMENT OF POTENTIAL IMPACTS BY SECTOR
HUMAN/BUILT SYSTEMS**

| Sector | Element | Potential Impacts | Impact Sensitivity (exposure/susceptibility) | Adaptive Capacity | Complicating/ Key Factors | Vulnerability (impact level) |
|----------|-----------------------|---|--|--------------------|---|------------------------------|
| Land Use | Shoreline Development | Increasing inundation from gradual sea level rise | High, for properties within inundation zones | Low | Armoring, seawall to be restricted (?) | High |
| | | Increasing frequency and severity of storm surges | High, for properties within inundation zones | Low | Armoring, seawall to be restricted (?) | High |
| | | Beach/bluff erosion with increasing rise/surges | High where bluffs are susceptible | Low | Armoring, seawall to be restricted (?) | High |
| | Stormwater control | Inundation/backup of drainage lines and discharge points from higher tides, storm surges | Medium – High, depending on location | Medium | Conventional v. LID systems use | Medium |
| | | Damage to discharge outfalls from bank erosion | High for sites subject to erosion | Low | Conventional v. LID systems use | High |
| | Hazardous Sites | Spread of contaminants through inundation/flooding from higher tides, storm surges | High at sites subject to storm surges or higher ground water | Low | Critical site is adjacent to Reservation | High |
| | Agriculture | Eventual inundation as rising high tide tops dikes | High, given relative uniformity of elevation | Medium (temporary) | Dike extension costly, temporary | Medium-High |
| | | Storm events push tidal surges over dikes | Medium, given prevailing direction of storms | Medium (temporary) | Dike extension costly, temporary | Medium |
| | | Increasing salinization from salt intrusion with rising sea levels | Medium, depending of reach of tidal influence | Low | Old sloughs create subsurface flow possibility? | Medium |
| | Housing/ Residential | Increasing inundation from gradual sea level rise and higher tides | High, for residential units within inundation zone | Low | Dike protection questionable, costly, temporary | High |
| | | Storm-tidal surge flooding, gently sloping shorelines, or where surge tops bank/seawall/dikes | High, for residential units within inundation zone | Low | Dike protection questionable, costly, temporary | High |

| Sector | Element | Potential Impacts | Impact Sensitivity (exposure/susceptibility) | Adaptive Capacity | Complicating/ Key Factors | Vulnerability (impact level) |
|---------------------|---------------------------------|---|--|---|--|---|
| (Land Use, cont'd.) | (Housing/ Residential, cont'd.) | Bank erosion, threatening near-bank structures | Medium, for residential units in erosion risk area | Low | Hard armoring of bank not likely; soft armoring? | Medium |
| | | Increased risk of wildfire from increasingly drier conditions | High, for residential units within Primary Risk Zone | Medium | Fuel management may reduce risk | Medium-High |
| | Commercial/ Industrial | Increasing inundation from gradual sea level rise and higher tides | High, for structures and property within inundation zone | Low | Dike protection questionable, costly, temporary | High |
| | | Storm-tidal surge flooding, gently sloping shorelines, or where surge tops bank/seawall/dikes | High, for structures and property within inundation zone | Low | Dike protection questionable, costly, temporary | High |
| | | Bank erosion, threatening near-bank structures | Medium, for structures in erosion risk area | Low | Hard armoring of bank not likely; soft armoring? | Medium |
| | | Increased risk of wildfire from increasingly drier conditions | High, for structures within Primary Risk Zone | Medium | Fuel management may reduce risk | Medium-High |
| | Recreation | Increasing inundation of public beaches, parks from gradual sea level rise | High, for areas within inundation zone | Low | Dike protection questionable, costly, temporary | High |
| | | Storm-tidal surge flooding, gently sloping shorelines, or where surge tops bank/seawall/dikes | High, for areas within inundation zone | Low | Dike protection questionable, costly, temporary | High |
| | | Spread of contaminants through inundation/ flooding from higher tides, storm surges | Medium, depending on sources of contaminants | High | Restricting on-site storage to control exposure | Low |
| | Public/Private Utilities | Water | Reduced supply due to decreased source (river/ snowpack), increased demand | Medium-High, dependent on regional conditions | Medium (well backup supply) | Alternate supply, options limited; off-Reservation dependence |

| Sector | Element | Potential Impacts | Impact Sensitivity (exposure/susceptibility) | Adaptive Capacity | Complicating/ Key Factors | Vulnerability (impact level) | |
|-------------------------------------|--|---|--|---|--|--|--------|
| (Public/Private Utilities, cont'd.) | | Contamination of local supplies from inundation, flooding | Medium, dependent on extent/severity | Low | Alternate supply, options limited | Medium | |
| | Wastewater | Inundation of treatment facilities from higher tides, storm surges | Low, given location of local facilities | Medium | Long-term risk? | Low | |
| | Communications | Service disruption from severe storm events; duration of outage proportional to severity | High, for land lines, based on past events, likely repeat | Low | Extent/severity affects response; cell/wireless likely less affected | High | |
| | Energy/Power | | Service disruption from severe storm events; duration of outage proportional to severity | High, based on past events, likely repeat | Low | Extent/severity affects response; preparedness lacking | High |
| | | | Increased energy demand to counter higher temperatures | Medium-High, event dependent | Medium | Energy efficiency improvements may offset | Medium |
| | Waste Disposal | Spread of waste from local/loose containers during flooding from higher tides, tidal surges, storm events | Medium-High, in vicinity of inundation zone | Medium | Tight control of storage to reduce potential | Medium | |
| Emergency Services | Police | Increased demand for assistance/ response during storm events, outages, flooding | Medium, as weather related emergencies increase | Medium | Increase available force; regional support, access issues? | Medium | |
| | Fire | Increased demand for assistance/ response to wildfire, storm events, outages, flooding | High, greater likelihood in wildfire risk zones | Medium | Stations located in risk zones; region wildfire support? | Medium- High | |
| | Other Emergency (disaster, repair crews, etc.) | Increased demand for assistance/ response during storm events, outages, flooding | Medium, as weather related emergencies increases | Medium | Regional response coordination? Preparedness lacking; access issues? | Medium | |

| Sector | Element | Potential Impacts | Impact Sensitivity (exposure/susceptibility) | Adaptive Capacity | Complicating/ Key Factors | Vulnerability (impact level) |
|----------------|--|---|--|-------------------|--|------------------------------|
| Human Health | Heat-related illness | Increased demand for and stress on services to treat heat-related health issues (heat exhaustion, heat stroke, etc.) | High, more so for elderly, infirm | Medium | Education, cooling benefits may be limited | Medium-High |
| | Disease vectors | New/increased disease vectors, and related outbreaks | Medium | Medium | | Medium |
| | Pollution-related illness | Increased pollution-related illness exacerbated by weather and climate conditions | Medium | Low | Traditional foods affected by pollution, heat stress | Medium- High |
| | Solar radiation issues | Increase in skin cancers from higher UV radiation levels | Medium | Medium | Education, access to health care, weather warning | Medium |
| | Respiratory disease | Increasing incidence of asthma, and allergen-related problems | Medium | Low | | Medium- High |
| | Food-related illness from contaminated seafood | Increased incidence of poisoning from consuming toxin-laden seafood (PSP in shellfish, mercury in salmon) ¹⁹ | High | Medium | Other food sources available? | Medium |
| Transportation | Access/ Circulation | Inundation of access, travel disruption, isolation from sea level rise topping dikes | High, for roads within inundation zones | Low | Moving routes, diking costly, temporary | High |
| | | Travel disruption/road closures, storm/tidal surge | Medium-High, for roads within inundation zones | Low | Lack of alternative routes? | Medium-High |
| | | Incidental road closure/ travel disruption from wildfire | Medium-High, for roads within primary wildfire risk zone | Low | Alternative plan for evacuation critical, lacking? | Medium-High |

¹⁹ Not exclusively related to climate change, but potentially exacerbated by it.

| Sector | Element | Potential Impacts | Impact Sensitivity (exposure/susceptibility) | Adaptive Capacity | Complicating/ Key Factors | Vulnerability (impact level) |
|--------------------|-----------------------------|---|--|--------------------------|---|-------------------------------------|
| (Transp., cont'd.) | Road System Integrity | Flooding damage from storm/tidal surge, buckling/cracking from higher temperatures | High, for roads within shoreline vicinity (surge), all roadways (heat) | Medium | Use of high-heat tolerant road materials | Medium |
| | Bridges | Erosion of bridge footings from high tides, surges | Medium, for bridge footings subject to scour | Medium | Possible armoring techniques? | Medium |
| | | Increased deterioration/fatigue of bridge joints | High, for extended heat spells | Medium | More frequent inspections, repair | Medium |
| | Public Transit | Service disruption, impact-related closures | High, for routes in affected zones | Low | Alternate routes to avoid issues? | High |
| | Marine transport facilities | Increasing inundation of marine facilities and ports from gradual sea level rise and higher tides | High, for facilities within inundation zones | Low | Cost/feasibility of rebuilding or relocating? | High |
| Cultural Resources | Coastal sites/artifacts | Increasing inundation of sites from sea level rise | High | Low | Most sites within inundation zones | High |
| | Burial sites/human remains | Disturbance/exposure from severe storm events | High, sites tend to occur along the shoreline | Low | Increased pressure for investigation | High |
| | Cultural use plants/animals | Loss/migration of traditional use species | High, loss/migration of species will increase as temperatures increase | Low | | High |
| | Traditional use areas | Loss of treaty protected resources (e.g., fishing, hunting, gathering) | Presume High (outside project scope, TBD) | (TBD) | | (TBD) |
| | Shellfish harvesting | Potential loss of harvest sites and opportunities | High | Low | Limited ability to migrate (?) | High |
| | Beach seining | Potential loss of seining sites and opportunities | High, given exposure | Low | | High |
| | Marine facilities | Increasing impacts to dock facilities from rising sea level | High | Low | Relocation possible? | High |

**VULNERABILITY ASSESSMENT OF POTENTIAL IMPACTS BY SECTOR
NATURAL SYSTEMS**

| Sector | Element | Potential Impacts | Impact Sensitivity (exposure/ susceptibility) | Adaptive Capacity | Complicating Factors | Vulnerability (impact level) |
|---------------------------------|-----------------------------|---|--|--------------------------|--|-------------------------------------|
| Shoreline/ Beaches | (general) | Increasing tidal inundation from gradual sea level rise | High | Low | Armoring/bulkhead restrictions? | High |
| | (general) | Increasing frequency and severity of storm/ tidal surges | High | Low | Armoring/bulkhead restrictions? | High |
| | (general) | Beach erosion with increasing rise/surges | High, depending on location | Low | Armoring/bulkhead restrictions? | High |
| Tidelands/ Marine Habitat | Habitat viability | Increasing inundation from sea level rise forcing gradual migration to maintain viability | High | Med | Armoring/bulkhead restrictions? | Medium-High |
| | Estuarine beaches | Increasing inundation and loss from rising sea level | High | Low | Armoring/bulkhead restrictions? | High |
| Fish & Wildlife | Shellfish | Increasing inundation of shallows, estuaries | Medium-High, depending on migration ability | Medium | Armoring/bulkhead restrictions? | Medium |
| | | Weakened viability due to habitat changes | high | Low | Armoring/bulkhead restrictions? | High |
| | Fin Fish | Increasing inundation of shallows, estuaries, spawning grounds | Medium-High, depending on species | Low-Medium | Armoring/bulkhead restrictions? | Medium-High |
| | | Weakened viability due to habitat changes | High | Low | | High |
| | Waterfowl/ Shorebirds | Loss of forage areas and opportunities due to impacts on food sources | Med- high depending on species | Low - med | | Medium-High |
| | Upland wildlife/ habitat | Degradation/conversion from higher temperature and increased wildfire incidence | High | Med | Urban forest interface and resources protecting structures | High |
| | | Stressed viability from habitat and temperature changes, forced migration | Medium-High | Low | Habitat fragmentation blocking migration | High |

| Sector | Element | Potential Impacts | Impact Sensitivity (exposure/ susceptibility) | Adaptive Capacity | Complicating Factors | Vulnerability (impact level) |
|------------------|-------------|--|---|-------------------|---|------------------------------|
| Water Resources | Freshwater | Declining consistency/ volume of in-stream flows, earlier peak runoff | Medium-High, greater as temperature rises | Low | More acute in snow-to-rain dominant transition areas | Medium-High |
| | Groundwater | Increasing salinization from salt water intrusion | Medium-High, wells near shoreline zones | Low | Greater drawdown exacerbates issues | Medium-High |
| | Wetlands | Increasing inundation from higher tides, storm surges (estuarine) | High, greater for estuarine, freshwater wetlands | Low | Conversion/loss proportional to inundation | High |
| | | Decline/degradation of upland wetlands from reduced flow input | High, greater with increasing temperature and declining precipitation | Low | Increased loss may contribute to higher wildfire potential | High |
| Forest Resources | (general) | Lower moisture content, increased potential for destructive wildfire | High, greater in primary wildfire risk zone | Low | Fuel loads, declining precipitation and freshwater heighten potential intensity | High |
| | | Heat stress, increase in drought-tolerant species, decrease in drought-sensitive species | High, greater with increasing temperature and declining precipitation | Medium | Some species may migrate; range of migration limited | Medium-High |
| | | Greater pest infestations, disease vectors (bark beetles, fungus, etc.) | High, greater with warmer winter, reduced freezing | Medium | Natural defense and recovery keyed to severity/extent of infestation | Medium-High |
| Air Quality | (general) | Increasing stagnation, noxious elements/ parameters due to higher average temperatures | Medium | Low | | Medium |

6.1 Inundation Risk Zones

To identify and map inundation risk zones, it was necessary to first establish the level of the current inundation zone relative to land elevation. Current inundation zones were based on mapping of tidal range from Mean Lower Low Water (MLLW) to Mean Higher High Water (MHHW), as developed from LIDAR data, Tidal Datums, and Tidal Benchmarks. For the purpose of risk analysis, projected inundation zones were derived by adding increase of up to 5 feet for sea level rise (upper range of surveyed scenarios) and an additional 3 feet beyond that for tidal surge (Zervas, 2005). The current MLLW and MHHW elevations were shifted accordingly to represent new projected levels of permanent inundation (MLLW) and maximum tidal influence (MHHW). It should be emphasized that the projected zones indicate areas of increased risk for this report, not necessarily projections of actual impact. Existing diking was represented as it exists in elevation mapping. Initial risk zone mapping was developed to show potential impact with no presumed dike protection, to highlight potential inundation in event of dike failure, intentional breach, or topping of dike by either higher projected tides or tidal surge. It should also be noted that not all areas subject to potential inundation are currently protected by dikes. Figure 6-1 and associated subarea maps in Appendix 7 illustrate mapping of sea level rise and tidal surge zones.

Approximately 29 homes are currently located in areas at risk of inundation from projected sea level rise; value of residential properties in this risk zone is estimated at approximately \$17,372,000. Eight commercial or non-residential facilities are also located within the sea level rise risk zone; value of these facilities is estimated at approximately \$3,185,000. Approximately 131 homes are currently located in areas at risk of tidal surge; value of residential properties in this risk zone is estimated at approximately \$66,012,000. Ten commercial/non-residential facilities are located in the potential tidal surge zone; value of these facilities is estimated at approximately \$15,524,000. In addition, 17 currently vacant but buildable lots valued at approximately \$5.1 million are located within either potential sea level rise or tidal surge zones. Table 6-2 provides a summary of properties identified within either sea level rise or tidal surge risk zones, with approximate values of identified properties, and Table 6-3 contains a listing of specific non-residential facilities identified.

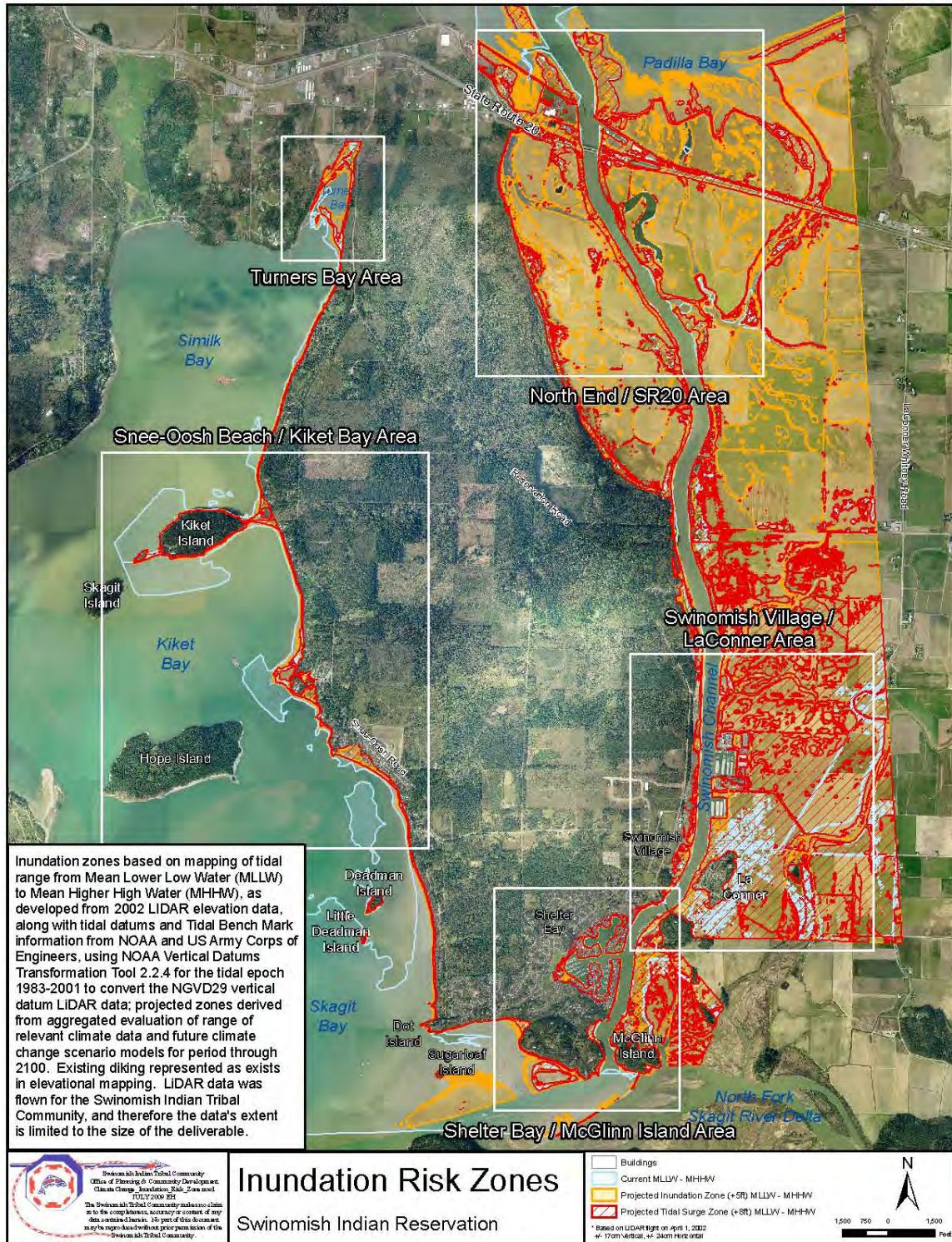


Figure 6-1. Inundation Risk Zones within the Swinomish Indian Reservation.



Figure 6-2. Residential Structures within Inundation Risk Zone

| Structures and Lots Within Inundation Risk Zones | | | | | | | | | | |
|--|-----------------------------|---------------------|------------------------------|---------------------|--------------------------|---------------------|---------------------------|--------------------|-----------------|----------------------|
| Subarea: | Swin. Village / Shelter Bay | | Economic Zone / Agricultural | | Snee-Oosh / Kiket Island | | Similk Bay / Turner's Bay | | Total All Areas | |
| Sea Level Rise | # | Approx. Value* | # | Approx. Value* | # | Approx. Value* | # | Approx. Value* | # | Approx. Value* |
| Residential | 16 | \$12,259,500 | 4 | \$1,088,100 | 9 | \$4,024,400 | 0 | \$0 | 29 | \$17,372,000 |
| Non-Residential | 4 | \$1,720,760 | 2 | \$670,000 | 2 | \$794,700 | 0 | \$0 | 8 | \$3,185,460 |
| Buildable Lots | 1 | \$308,800 | 0 | \$0 | 9 | \$3,050,000 | 3 | \$1,044,500 | 13 | \$4,403,300 |
| Subtotal | 21 | \$14,289,060 | 6 | \$1,758,100 | 20 | \$7,869,100 | 3 | \$1,044,500 | 50 | \$24,960,760 |
| Tidal Surge | | | | | | | | | | |
| Residential | 121 | \$63,282,900 | 1 | \$192,200 | 7 | \$2,228,300 | 2 | \$308,800 | 131 | \$66,012,200 |
| Non-Residential | 4 | \$1,124,000 | 5 | \$14,146,300 | 1 | \$253,200 | 0 | \$0 | 10 | \$15,523,500 |
| Buildable Lots | 3 | \$525,000 | 0 | \$0 | 1 | \$172,400 | 0 | \$0 | 4 | \$697,400 |
| Subtotal | 128 | \$64,931,900 | 6 | \$14,338,500 | 9 | \$2,653,900 | 2 | \$308,800 | 145 | \$82,233,100 |
| Total Risk Zones | | | | | | | | | | |
| Residential | 137 | \$75,542,400 | 5 | \$1,280,300 | 16 | \$6,252,700 | 2 | \$308,800 | 160 | \$83,384,200 |
| Non-Residential | 8 | \$2,844,760 | 7 | \$14,816,300 | 3 | \$1,047,900 | 0 | \$0 | 18 | \$18,708,960 |
| Buildable Lots | 4 | \$833,800 | 0 | \$0 | 10 | \$3,222,400 | 3 | \$1,044,500 | 17 | \$5,100,700 |
| TOTAL | 149 | \$79,220,960 | 12 | \$16,096,600 | 29 | \$10,523,000 | 5 | \$1,353,300 | 195 | \$107,193,860 |

*Values based on Assessor's records of market value for fee properties, and Swinomish Tribal data for certain trust properties.

Table 6-2. Structures and Lots Within Inundation Risk Zones.

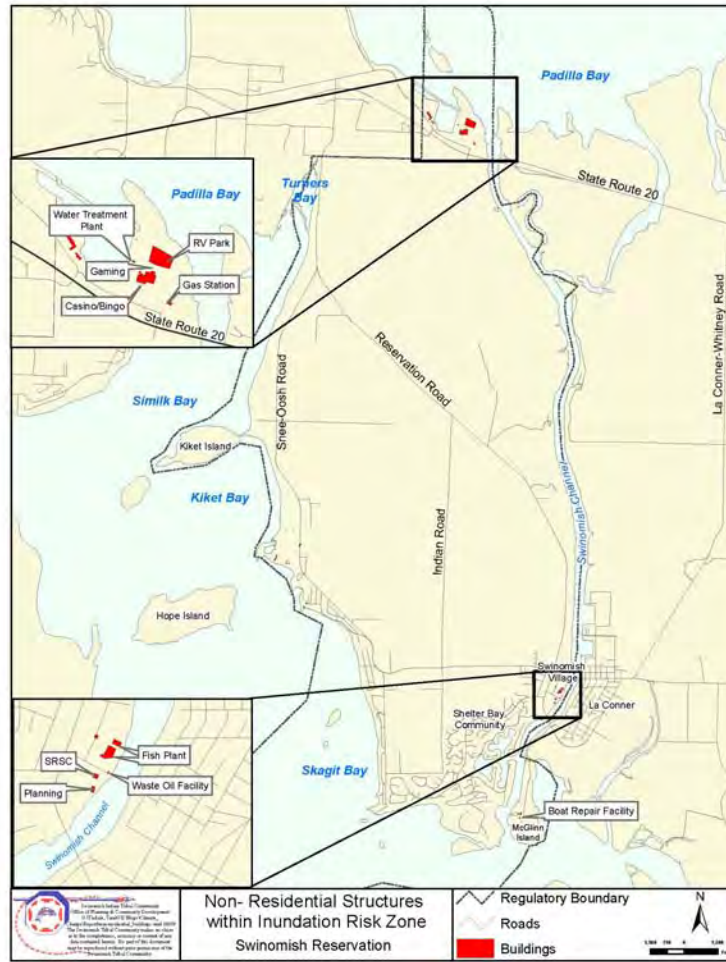


Figure 6-3. Non-Residential Structures within Inundation Risk Zone

| Non-Residential Facilities Within Inundation Zones | | |
|--|------------------------------|---------------------|
| Sea Level Rise: | Location | Approx. Value |
| Fish Plant | Swinomish Village | \$1,675,000 |
| SITC Boat repair facility | McGlenn Island | \$45,760 |
| Smoke shop | North end commercial zone | \$670,000 |
| Hope Island Inn | Snee-Oosh Beach (west shore) | \$783,800 |
| Community pump station | Snee-Oosh Beach (west shore) | \$10,900 |
| Total | | \$3,182,460 |
| Tidal Surge: | Location | Approx. Value |
| Skagit River System Coop. | Swinomish Village | \$284,000 |
| SITC Planning Department | Swinomish Village | \$575,000 |
| SITC Waste Oil Facility | Swinomish Village | \$15,000 |
| Latitude Marine | McGlenn Island | \$250,000 |
| SITC Casino/Bingo | North end economic zone | \$9,412,000 |
| SITC Gas Station | North end economic zone | \$2,000,000 |
| SITC RV Park | North end economic zone | \$584,300 |
| SITC Water Treatment Plant | North end economic zone | \$2,100,000 |
| SITC Gaming Office | North end economic zone | \$50,000 |
| Fire District 13 station | Snee-Oosh Beach (west shore) | \$253,200 |
| Total | | \$15,523,500 |

Table 6-3. Non-Residential Facilities Within Inundation Zones

Based on the identified exposure of properties within the sea level rise and/or tidal surge risk zone and the perceived susceptibility to eventual impacts, sensitivity of identified properties to projected impacts is deemed to be high in general, with limited and temporary reprieve where the few existing dikes may currently protect given areas (mostly on the north end). Given the perceived relative difficulty or potentially great expense of armoring or otherwise protecting properties from eventual impacts, adaptive capacity of most areas to inundation is deemed to be low. Seawalls, dikes, or other such protection may be constructed as a barrier to tidal inflow, but given the predicted continual rise, such measures will prove to be of relatively temporary benefit and will ultimately be a losing game over the long term; alternatives would be to raise or relocate structures away from shoreline areas, both of which entail considerable cost, or to abandon in favor of owner relocation. Given these alternatives, overall vulnerability to inundation is rated generally high where such impacts are anticipated.

6.2 Economic Development and Agricultural Lands

Projected impacts on economic development and agricultural lands within the Reservation merit special mention. The Tribe's economic development strategy has for some time targeted relatively low-lying areas on the north end of the Reservation in the vicinity of SR20 for existing and future development, and key Tribal enterprises including a casino and gas station are located there. Impacts to these areas will have potentially significant repercussions for the Tribe's infrastructure.

Existing enterprises are located just above projected impact zones, and presumably not directly subject to potential impacts, but business operations could yet be affected eventually by virtue of impacts to surrounding lower lying areas. While dikes currently protect other prime economic development land south of SR20, complicating factors with major oil and gas pipelines currently transecting that area are such that future business development will not likely have the advantage of fill height to put it above rising tidal influence, further raising the stakes and forcing increased reliance on diking or other means of protection. The overall ramifications of these circumstances are that, if such enterprises and future economic development remain in the present location, the Tribe is highly vulnerable to eventual impacts on, and potential disruption of, critical financial enterprises. This will require increasingly critical reconsideration of strategic options for economic development for the Tribe to preserve and sustain the viability of its financial engines.

While few improvements are located within Tribal agricultural lands and the Tribe does not directly engage in agricultural operations, the Tribe continues to garner revenue from leases for ongoing private agricultural operations. With these being the only agricultural lands within the Reservation, and being located exclusively in low-lying areas protected currently by dikes and tide gates, the Tribe is at risk of losing these lands entirely at some point in the future, should diking become insufficient for protection from encroaching inundation.

6.3 Infrastructure Vulnerabilities and Critical Off-Reservation Issues

If potential impacts loom at some point in the future from inundation to low-lying areas on the north end of the Reservation west of the Swinomish Channel, then the same may possibly be said of adjacent low-lying farmlands across the Swinomish Channel to the east, which lie at roughly the same elevation. This study did not examine potential off-Reservation impacts to any great extent, and the Tribe's available data for this area is confined to a limited amount of elevation

data for a narrow strip east of the channel; despite that, there are potentially very significant potential vulnerabilities resulting from possible off-Reservation impacts.

One such primary vulnerability is derived from the fact that key access routes to the Reservation are located in these low-lying areas, and potential inundation of these routes could effectively isolate the Reservation from the mainland, disrupting travel and necessary access to services and goods. SR20, the sole state highway accessing the Reservation, has approaches through low-lying farmlands to the east, and similar vulnerabilities exist at Reservation Road next to Turner's Bay and in La Conner just north of the Rainbow Bridge. Indeed, a February 2006 storm surge event came within inches of inundating the latter two locations and cutting off access to the Reservation entirely; had the storm surge event occurred a few days earlier at a higher tide, such inundation of access might have happened. Estimates are that the event was approximately the equivalent of a 4-foot tidal surge above normal, within the range of projections for both sea level rise and surge events.

Other such vulnerabilities stem from the Tribe's connections to water and sewer service off-Reservation. Although the Tribe is the primary water purveyor within the Reservation, the Tribe largely purchases its supply from the City of Anacortes for distribution through the Tribal system. Likewise, the Tribe contracts with the Town of La Conner for wastewater service, which is handled by the treatment plant located just east of La Conner off Chilberg Road. While no clear impacts to either of these may currently be identified, such cannot be discounted entirely. If changing conditions were to negatively affect the Skagit River, which feeds water service for many local communities including Anacortes, and flows were reduced such that available water supply decreased, the Tribe's current source of water supply would be threatened. And though the La Conner wastewater treatment plant appears to mostly be above projected inundation elevations, a repeat of the February 2006 event high enough to top existing protection in La Conner could potentially result in disruption of service, in addition to other impacts.

6.4 Wildfire Risk Zone

The urban/forest interface was evaluated using analysis of GIS and aerial photo data, correlating developed areas of varying densities to forested areas of given density. Forested areas cover the majority of Reservation uplands, while developed areas primarily lie within southeastern, southern, and west shore areas, although some scattered pockets of homes and homesites exist in interior uplands. Where denser developed and forested areas intersect, a wildfire risk zone was identified, as augmented by a 200-foot buffer around identified developed areas. Consideration was also given to the direction of prevailing winds during dry seasons which could potentially blow and feed wildfire into downwind areas. While the entire Reservation is deemed to potentially be at risk of wildfire due to extent of forestation, the identified urban/forest interface zones were deemed to be at greatest risk, and for the purpose of risk evaluation and response strategy implementation, were designated primary wildfire risk zones. Approximately 2,218 acres of land and over 1,500 structures are currently located in this high risk wildfire zone. More than 1,300 residential structures, including associated detached accessory structures such as garages and workshops, are located within this zone, as are 9 non-residential facilities, in addition to 183 currently vacant but buildable lots. Figure 6-4 shows mapping of the primary wildfire risk zone and residential structures located within that zone; Figure 6-5 shows non-residential structures within the zone. Table 6-4 lists properties within this zone and their approximate market value; Table 6-5 lists specific non-residential facilities found within this zone.

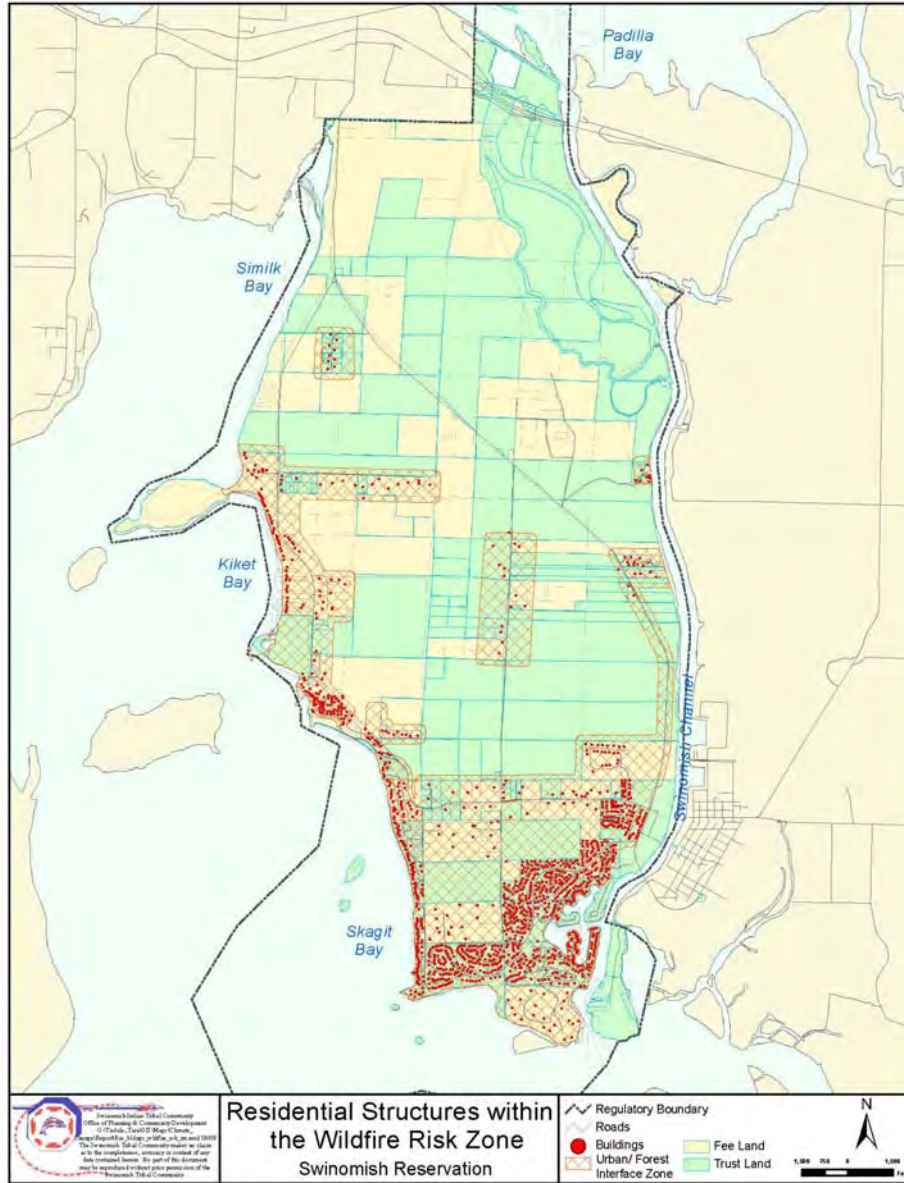


Figure 6-4. Residential Structures within Primary Wildfire Risk Zone.

| PROPERTY WITHIN PRIMARY WILDFIRE RISK ZONES (Urban/Forest Interface) | | | |
|---|--------------|--------------|-----------------------|
| Property Type | Number | Acres | Approx. Value |
| Residential | 1,368 | 1,995 | \$ 493,688,000 |
| Non-Residential | 9 | 143 | \$ 4,806,000 |
| Buildable Lots | 183 | 80 | \$ 19,918,000 |
| TOTAL | 1,560 | 2,218 | \$ 518,412,000 |

Table 6-4. Property Within Primary Wildfire Risk Zones.

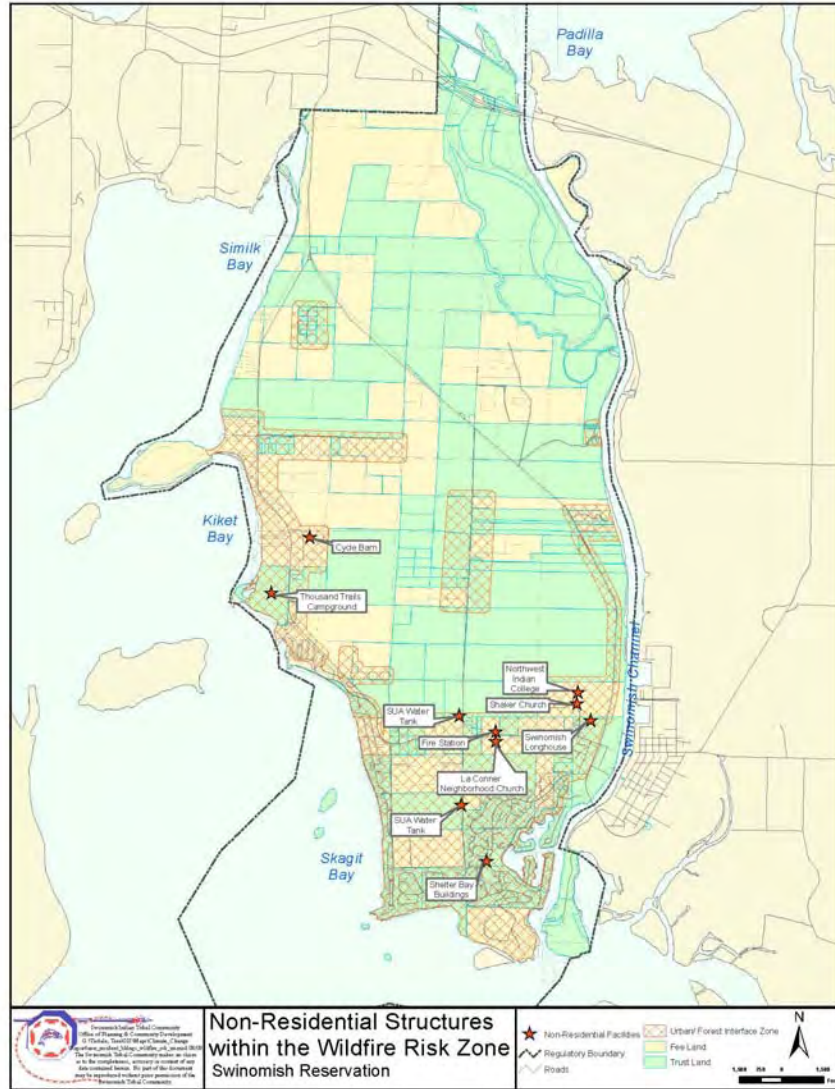


Figure 6-5. Non-Residential Structures within Primary Wildfire Risk Zone

| Non-Residential Facilities Within Primary Wildfire Risk Zone | | |
|--|--------------------------------|--------------------|
| Facility | Location | Approx. Value |
| Swinomish Longhouse | Swinomish Village | \$250,000 |
| Fire District 13 station (new) | Snee-Oosh Rd., west of Village | \$320,000 |
| LaConner Neighborhood Church | Snee-Oosh Rd., west of Village | \$251,000 |
| Shelter Bay Community buildings | Shelter Bay | \$750,000 |
| Thousand Trails Campground | Lone Tree Point | \$1,444,000 |
| Northwest Indian College | Tallawhalt | \$550,000 |
| Shaker Church (new) | Tallawhalt | \$300,000 |
| Swinomish Utility water tanks | Indian Rd. | \$600,000 |
| Cycle Barn | Mill Rd. Lane | \$341,000 |
| TOTAL | | \$4,806,000 |

Table 6-5. Non-Residential Facilities Within Primary Wildfire Risk Zone.

The largest community within the zone, the Shelter Bay Community with approximately 900 lots, has taken steps to implement the “Firewise” program to reduce the risk of wildfire; while this is an important step toward minimizing the risk, many trees remain in Shelter Bay and denser stands exist to the west, a dangerous direction from which a fire outbreak could erupt, given prevailing winds. Given the examples of devastating fires in communities around the country and the similarity of conditions and potential within this risk zone, structures and communities within this zone are deemed to be highly vulnerable to potential wildfire.

6.5 On-Reservation Fishing and Shellfish Harvest

Beach seining and shellfish harvesting have long traditions with the Tribe and are important elements of Tribal cultural and historical identity. Salmon have an equally prominent place in Tribal traditions, and the Tribe, through its fisheries branch, has invested significant time and effort into enhancement and protection of salmon habitat on the Reservation. Much work has gone into enhancement of estuarine habitat for salmon at various shoreline locations, as well as protection of stream habitat that is vital to viability of salmon production and survival. Key pockets of estuarine habitat around the perimeter of the Reservation are at risk of loss from eventual sea level rise, and increased sedimentation from higher runoff will threaten stream viability of habitat. The few beach seining sites on the Reservation are highly vulnerable to eventual and permanent inundation from sea level rise, and lacking the ability to perform seining at somewhat higher elevation as sea level rises, such activity could eventually disappear entirely.

Shellfish beds on the Reservation were previously identified through mapping of sensitive areas under the Shoreline and Sensitive Areas ordinance. Productive shellfish beds are located along the west shore of the Reservation, as shown in Figure 5-3. By their nature, shellfish beds are found in existing intertidal zones periodically inundated by fluctuating tides, but are not permanently inundated. These shellfish beds are entirely at risk of loss through permanent inundation, being located in tidal zones projected to experience increasing sea level rise, as potential migration of shellfish beds will ultimately be blocked by steeper shorelines and bluffs. Such inundation would result in significant loss of long-standing traditional tribal shellfish harvest opportunities.

In addition, shellfish populations may be vulnerable to the effects of increasing acidification of marine waters, should such changes occur as is currently being observed in Pacific coastal waters. Increasing acidity would cause the calcium carbonate shells to dissolve, essentially destroying the viability of the organisms. Populations are considered to be highly vulnerable to such potential impacts.

6.6 Potential Erosion Areas

Some structures which appear to be well above likely sea level rise inundation or surge levels could be impacted by shoreline erosion. In areas where there is no bank protection such as rock outcrops or bulkheads, a rise in sea level could accelerate erosion and put structures at risk on both medium banks and on high marine bluffs where some structures have been constructed too close to the top of the bank or bluff. Strong storms and tidal surges could further exacerbate erosion and slumping of banks and bluffs, undermining and threatening structures. The general factors determining potential for erosion include degree of slope, fetch of shoreline grade, soil composition, and degree of stabilizing vegetation, but it must be noted that erosion of unprotected

shorelines, bluffs and high banks within the Reservation has not been well studied or documented. While these processes and effects already occur, the extent to which they may be accelerated with sea level rise is uncertain; where the right combination of factors occurs, however, there is potential for erosion. It would seem prudent, therefore, to identify potential erosion areas, with the expectation that setback of structures within those zones will need to be determined with additional study. Figure 6-6 illustrates shoreline areas potentially susceptible to erosion from either sea level rise or storm/tidal surge, based on current knowledge of contributing factors.

The response of homeowners and others to such risks is key, not only to assessing potential impacts to those structures, but also to assessing the resulting impacts of home protection on adjacent habitat and resources when coupled with the effects of sea level rise. If homes at risk are allowed to construct or raise bulkheads for protection, those structures in turn will divert impacts onto nearby beaches and nearshore environments. Waves reflect off bulkheads, scouring the beach and impacting habitat such as forage fish spawning areas and eelgrass beds. Built structures along the shoreline can also interfere with longshore transport of sediment or with inputs of sediments from eroding bluffs. This could cause additional problems associated with shoreline impacts by starving the systems of sediments needed for accretion of beaches, making it harder for natural processes to keep ahead of sea level rise.



Figure 6-6. Potential Shoreline Bluff Erosion Areas.

7. Risk Analysis

The ultimate outcome of this project is to identify and prioritize appropriate strategies to respond to climate change challenges. Choosing such strategies and assigning proper priorities necessarily relies upon the risk and probability of given events. Once the vulnerability assessment is complete, risk analysis is a relatively straight-forward, quasi-computational exercise. The vulnerability assessment produces the level of impact, or “consequence,” for impacts on given sectors, and this consequence is combined with previously estimated probability to derive the estimated risk. Following the methods in the King County guidebook, we estimate the risk with the following equation (CIG 2007):

$$\text{Consequence} \times \text{Probability} = \text{Estimated Risk.}$$

Applying this methodology to vulnerable areas within the Reservation, a risk analysis was performed for identified impacts and vulnerabilities, as summarized in Table 7-1. This level of analysis is intended to inform and guide later critical decision-making on adaptation options and is not framed for the purposes presented here in the context of more traditional uses of risk, such as insurance estimating or financial planning. Financial issues are certainly a consideration in terms of cost of proposed actions, and will be considered as such in the ensuing phase of work to determine recommended actions, but risk as used here will be applied to help guide evaluation of adaptation policy options.

In that context, the analysis presented here is subject to further consideration and/or revision based on other factors such as timeframes for impacts/actions, geographic scope of impacts/actions, and competing priorities. Much of this additional analysis will occur as part of the second phase of this project to evaluate potential strategies and actions. This later phase of work will involve input from a wide cross-section of interests, including Tribal departments and staff, community groups, advisory groups, and outside entities with whom coordination may be sought. The bottom line for decision-makers is that ultimate determination of perceived risk is not necessarily a fixed item but may also be subject to individual perceptions of issues including risk.

**TABLE 7-1. RISK ANALYSIS OF POTENTIAL IMPACTS BY SECTOR
HUMAN/BUILT SYSTEMS**

| Sector | Element | Potential Impacts | Vulnerability (impact level) | Probability of Impact | Estimated Risk |
|---------------|-----------------------|---|-------------------------------------|------------------------------|-----------------------|
| Land Use | Shoreline Development | Increasing inundation from gradual sea level rise | High | High | High |
| | | Increasing frequency and severity of storm surges | High | High | High |
| | | Beach/bluff erosion with increasing rise/surges | High | High | High |
| | Stormwater Control | Inundation/backup of drainage lines and discharge points from higher tides, storm surges | Medium | Medium | Medium |
| | | Damage to discharge outfalls from bank erosion | High | Medium | Medium-High |
| | Hazardous Sites | Spread of contaminants through inundation/ flooding from higher tides, storm surges | High | Medium | Medium-High |
| | Agriculture | Eventual inundation as rising high tide tops dikes | Medium-High | High | Medium-High |
| | | Storm events push tidal surges over dikes | Medium | High | Medium-High |
| | | Increasing salinization from salt intrusion with rising sea levels | Medium | High | Medium-High |
| | Housing/ Residential | Increasing inundation from gradual sea level rise and higher tides | High | High | High |
| | | Storm-tidal surge flooding, gently sloping shorelines, or where surge tops bank/seawall/dikes | High | Medium | Medium-High |
| | | Bank erosion, threatening near-bank structures | Medium | Medium | Medium |
| | | Increased risk of wildfire from increasingly drier conditions | Medium-High | High | Medium-High |

| Sector | Element | Potential Impacts | Vulnerability (impact level) | Probability of Impact | Estimated Risk |
|--------------------------|------------------------|---|------------------------------|-----------------------|----------------|
| (Land Use cont'd.) | Commercial/ Industrial | Increasing inundation from gradual sea level rise and higher tides | High | High | High |
| | | Storm-tidal surge flooding, gently sloping shorelines, or where surge tops bank/seawall/dikes | High | Medium | Medium-High |
| | | Bank erosion, threatening near-bank structures | Medium | Medium | Medium |
| | | Increased risk of wildfire from increasingly drier conditions | Medium-High | High | Medium-High |
| | Recreation | Increasing inundation of public beaches, parks from gradual sea level rise | High | High | High |
| | | Storm-tidal surge flooding, gently sloping shorelines, or where surge tops bank/seawall/dikes | High | Medium | Medium-High |
| | | Spread of contaminants through inundation/ flooding from higher tides, storm surges | Medium | Medium | Medium |
| Public/Private Utilities | Water | Reduced supply due to decreased source (river/ snowpack), increased demand | Medium | Medium | Medium |
| | | Contamination of local supplies from inundation, flooding | Medium | Medium | Medium |
| | Wastewater | Inundation of treatment facilities from higher tides, storm surges | Low | Medium | Low- Medium |
| | Communications | Service disruption from severe storm events; duration of outage proportional to severity | High | Medium | Medium-High |
| | Energy/Power | Service disruption from severe storm events; duration of outage proportional to severity | High | Medium | Medium-High |
| | | Increased energy demand to counter higher temperatures | Medium | Medium | Medium |
| | Waste Disposal | Spread of waste from during flooding from higher tides, tidal surges, storm events | Medium | Medium | Medium |

| Sector | Element | Potential Impacts | Vulnerability (impact level) | Probability of Impact | Estimated Risk |
|--------------------|--|--|------------------------------|-----------------------|----------------|
| Emergency Services | Police | Increased demand for assistance/response during storm events, outages, flooding | Medium | Medium | Medium |
| | Fire | Increased demand for assistance/response to wildfire, storm events, outages, flooding | Medium- High | High | Medium-High |
| | Other Emergency (disaster, repair crews, etc.) | Increased demand for assistance/response during storm events, outages, flooding | Medium | Medium | Medium |
| Human Health | Heat-related illness | Increased demand for and stress on services to treat heat-related health issues (heat exhaustion/stroke, etc.) | Medium-High | High | Medium-High |
| | Disease vectors | New/increased disease vectors, and related outbreaks | Medium | Medium | Medium |
| | Pollution-related illness | Increased pollution-related illness exacerbated by weather and climate conditions | Medium- High | Medium | Medium-High |
| | Solar radiation issues | Increase in skin cancers from higher UV radiation levels | Medium | Medium | Medium |
| | Respiratory disease | Increasing incidence of asthma, and allergen-related problems | Medium- High | Medium | Medium-High |
| | Food-related illness from contaminated seafood | Increased incidence of poisoning from consuming toxin-laden seafoods | Medium | Medium | Medium |
| Transportation | Access/ Circulation | Inundation of access routes, travel disruption, isolation from mainland, as higher tides top dikes | High | High | High |
| | | Travel disruption/road closures due to stronger/ more frequent storm/tidal surge events | Medium-High | Medium | Medium |
| | | Incidental road closure/ travel disruption from wildfire | Medium-High | Medium | Medium |
| | Road System Integrity | Flooding damage from storm/tidal surge, buckling/cracking from higher temperatures | Medium | Medium | Medium |

| Sector | Element | Potential Impacts | Vulnerability (impact level) | Probability of Impact | Estimated Risk |
|--------------------------|-----------------------------|---|------------------------------|-----------------------|----------------|
| (Transportation cont'd.) | Bridges | Erosion of bridge footings from higher tides/storm surges | Medium | Medium | Medium |
| | | Increased deterioration/ fatigue of bridge joints from increased or prolonged heat | Medium | Medium | Medium |
| | Public Transit | Service disruption, impact-related closures | High | Medium | Medium-High |
| | Marine transport facilities | Increasing inundation of marine facilities and ports from gradual sea level rise and higher tides | High | High | High |
| Cultural Resources | Coastal sites/ artifacts | Increasing inundation of sites from gradual sea level rise | High | High | High |
| | Cultural remains | Disturbance/exposure from severe storm events | High | Medium | Medium-High |
| | Cultural use plants | Loss/migration of traditional cultural use species | High | Medium | Medium-High |
| | Treaty areas | Impacts to “U & A” treaty resources (e.g., fishing, hunting) | (TBD) | Medium | (TBD) |
| | Shellfish harvesting | Potential loss of harvest sites and opportunities due to impacts to shellfish populations and habitat | High | High | High |
| | Beach seining | Potential loss of beach seining sites and opportunities | High | High | High |
| | Marine facilities | Increasing impacts to dock facilities from rising sea level, impairing fishing activities | High | High | High |

**RISK ANALYSIS OF POTENTIAL CLIMATE CHANGE IMPACTS BY SECTOR
NATURAL SYSTEMS**

| Sector | Element | Potential Impacts | Vulnerability (impact level) | Probability of impact | Estimated Risk |
|---|-----------------------------|---|------------------------------|-----------------------|----------------|
| Shoreline/ Beaches | (general) | Increasing tidal inundation from gradual sea level rise | High | High | High |
| | (general) | Increasing frequency and severity of storm/ tidal surges | High | High | High |
| | (general) | Beach erosion with increasing rise/surges | High | High | High |
| Tidelands/ Marine Habitat | Habitat viability | Increasing inundation from sea level rise forcing gradual migration to maintain viability | Medium-High | High | Medium-High |
| | Estuarine beaches | Increasing inundation and loss from rising sea level | High | High | High |
| Fish & Wildlife | Shellfish | Increasing inundation of shallows, estuaries | Medium | High | Medium-High |
| | | Weakened viability due to habitat changes | High | Medium | Medium-High |
| | Fin Fish | Increasing inundation of shallows, estuaries, spawning grounds | Medium-High | High | Medium-High |
| | | Weakened viability due to habitat changes (temperature, acidification, etc.) | High | Medium | Medium-High |
| | Waterfowl/ Shorebirds | Loss of forage areas and opportunities due to impacts on food sources | Medium-High | Medium | Medium-High |
| | Upland wildlife/ habitat | Degradation/conversion from higher temperature and increased wildfire incidence | High | Medium | Medium-High |
| Stressed viability from habitat and temperature changes, forced migration | | High | Medium | Medium-High | |

| Sector | Element | Potential Impacts | Vulnerability (impact level) | Probability of impact | Estimated Risk |
|------------------|----------------|--|-------------------------------------|------------------------------|-----------------------|
| Water Resources | Freshwater | Declining consistency/ volume of in-stream flows, earlier peak runoff | Medium-High | Medium | Medium-High |
| | Groundwater | Increasing salinization from salt water intrusion | Medium-High | Medium | Medium-High |
| | Wetlands | Increasing inundation from higher tides, storm surges (estuarine) | High | High | High |
| | | Decline/degradation of upland wetlands from reduced flow input | High | Medium | Medium-High |
| Forest Resources | (general) | Lower moisture content, increased potential for destructive wildfire | High | High | High |
| | | Heat stress, increase in drought-tolerant species, decrease in drought-sensitive species | Medium-High | Medium | Medium-High |
| | | Greater pest infestations, disease vectors (bark beetles, fungus, etc.) | Medium-High | High | Medium-High |
| Air Quality | (general) | Increasing stagnation, noxious elements/ parameters due to higher average temperatures | Medium | Medium | Medium |

8. Conclusions

The scientific evidence of climate change is increasingly abundant and convincing. Warmer global temperatures, melting glaciers, reduced mountain snow pack, rising sea levels, declining summer river flows, and other factors point to such evidence. Given the geographic location and characteristics of the Swinomish Indian Reservation, climate change impacts on the Reservation community are perceived to potentially be both significant and long-term.

Determining proper responses to climate change impacts is essentially a deliberative game of “what-if’s.” What if sea level rise eventually threatens to cut off access to the Reservation from the mainland? What if higher tides or tidal surges threaten valuable commercial, residential, or infrastructure investments? What if dock facilities for fishing or other commercial purposes became unusable? What if a serious wildfire broke out in a densely developed area of the Reservation during a searing heat wave? What if any or all of these were to happen sooner than predicted? This project attempts to address such critical questions, and this report is the first step toward the answers.

The scope of this assessment is broad by design to help ensure that this first look at potential issues will be properly comprehensive and will allow for the fullest consideration and prioritization of issues. The range of potential impacts identified in this assessment therefore affects a broad cross-section of interests and assets. While numerous impacts were ranked as significant, the broad scope of the project and identified issues necessarily limited the depth to which any single issue or group of issues could be examined, and a number of issues warrant such further examination. The need for further study, coupled with the expected long-term duration of climate changes, mandates that considered responses will need to be crafted over timeframes much longer than is customary for conventional planning efforts. The extended timeframes needed for planning and implementing responses will present new and possibly unique challenges for those responsible for undertaking response, including how to institutionalize and adapt response to changing information and conditions over time.

Building upon the results of this analysis, risk and vulnerability can be used together to inform and guide the process of prioritizing planning areas (sectors) for strategy development and implementation, which will be a key component of the final action plan. Table 8-1 below is a generalized version of the vulnerability-risk prioritizing methodology. This prioritization task will be an important component of the next phase of work during the second year of the project.

PLANNING AREAS WITH SYSTEMS THAT ARE...

| | Low Vulnerability | High Vulnerability |
|-----------|---|--|
| High Risk | <i>May be priority planning areas</i> | <i>Should be priority planning areas</i> |
| Low Risk | <i>Are unlikely to be priority planning areas</i> | <i>May be priority planning areas</i> |

Source: Preparing for Climate Change: A Guidebook for Local, Regional, and State Governments

Table 8-1. Sample Vulnerability-Risk Matrix for Identifying Priority Planning Areas

9. References

The following reports have been reviewed under this project for the purpose of assessing climate change impacts; references in boldface indicate primary sources cited:

- Andrey J, Mills B (2003) Climate change and the Canadian transportation system: vulnerabilities and adaptations. In: Andrey J, Knapper J (eds) Weather and transportation in Canada. Department of Geography, University of Waterloo. Ontario, Canada
- Bartlett KH, Kidd SE, Kronstad JW (2008) The emergence of *Cryptococcus gattii* in British Columbia and the Pacific Northwest. *Current Infectious Disease Reports* 10:58-65.
- Beggs PJ, Bambrick HJ (2005) Is the global rise of asthma an early impact of anthropogenic climate change? *Environmental Health Perspectives* 113:915-919. Doi:10.1289/ehp.7724. Available via <http://dx.doi.org/> Accessed 20 April 2005
- Booth S, Zeller D (2006) Mercury, food webs, and marine mammals: Implications of diet and climate change for human health. *Environmental Health Perspectives* 113(5):521-526. Published online 2005 February 2. Doi:10.1289/ehp.7603
- Bouma MJ, van der Kaay HJ (1994) Epidemic malaria in India and the El Niño southern oscillation. *Lancet* 344:1638–1639, Pmid:7984012.
- Bunyanich S, Landrigan C, McMichael A, Epstein P (2003) The impact of climate change on child health. *Ambulatory Pediatrics*, Volume 3, Issue 1, Pages 44-52
- Colwell RR (1996) Global climate and infectious disease: The cholera paradigm. *Science* 274:2025–2031. Pmid:8953025
- Cheney D, Dewey B (2009) Shellfish and climate change: Ecological and economic effects. Presentation at the Washington Climate Change Impacts Assessment Conference Feb. 12, 2009. Climate Impacts Group, University of Washington. Seattle, WA
- Colwell RR, Patz JA (1998) Climate, infectious disease and human health: An interdisciplinary perspective, American Society for Microbiology. Washington, DC
- de Chavez R, Tauli-Corpuz V (2008) Guide on climate change & Indigenous Peoples. Tebtebba Foundation Indigenous Peoples' International Centre for Policy Research and Education, Baguio City, Philippines
- DHPE (Directors of Health Promotion and Education). Internet resource site for infectious diseases. <http://www.dhpe.org/infect/index.html> Accessed 23 March 2009
- Diffey B (2004) Climate change, ozone depletion and the impact on ultraviolet exposure of human skin. *Physics in medicine and biology* 49 R1-R11
- Diggle L (2007) Rotavirus diarrhea and future prospects for prevention. *British Journal of Nursing* 16(16):970–4. Pmid:18026034
- Duffy A, (1999) Temperature and thermal expansion. Boston University Physics Department. <http://physics.bu.edu/~duffy/py105/Temperature.html> Accessed 9 April, 2009
- Fischer TK, Viboud C, Parashar U et al (2007) Hospitalizations and deaths from diarrhea and rotavirus among children <5 years of age in the United States, 1993–2003. *Journal of Infectious Diseases*. 195 (8): 1117–25. Doi:10.1086/512863. Pmid:17357047
- Gleick PH, Cooley H, Heberger M, Herrera P, Moore E (2009) The impacts of sea-level rise on the California coast. Pacific Institute CEC-500-2009-024-D
- Glick P, Clough J, Nunley B (2007) Sea level rise and coastal habitats in the Pacific Northwest: An analysis for Puget Sound, Southwestern Washington, and Northwestern Oregon. National Wildlife Federation**
- Gubler DJ, Reiter P, Ebi KL, Yap W, Nasci R, Patz JA (2001) Climate variability and change in the United States: Potential impacts on vector- and rodent-borne diseases. *Environmental Health Perspectives* 109 Suppl 2:223-33

- Guinotte J, Fabry V (2008) Ocean acidification and its potential effects on marine ecosystems. *Annals of the New York Academy of Sciences* 1134:320-342, Doi:10.1196/1439.013
- Hansen T (2008-2009) NW coastal nations at risk of climate change disruption. News from Indian Country 28 Apr 2008. http://indiancountrynews.net/index.php?option=com_content&task=view&id=3080&Itemid=5. Accessed 7 July, 2009
- Hood WG, (2008) Estuarine habitat restoration with global climate change and rising sea-level. Skagit River Systems Cooperative, Powerpoint presentation at Skagit Basin Climate Change Workshop, March 5-6, 2009
- Hyman RC, Potter JR, Savonis MJ, Burkett VR, Tump JE (2008) Impacts of climate change and variability on transportation systems and infrastructure: Gulf Coast Study, Phase I. U.S. Climate Change Science Program (USCCSP), Subcommittee on Global Change Research, Committee on the Environment and Natural Resources, Executive Office of the President, Washington, DC.
- Iacobellis, S.F., J. R. Norris, M. Kanamitsu, M. Tyree and D. R. Cayan. 2009. Climate variability and California low level temperature inversions (Draft). Scripts Institute of Oceanography. 47 pages.
- IPCC Working Group I (2007) Climate change 2007: the physical science basis. Contribution of Working Group I to the Fourth Assessment Report of the Intergovernmental Panel on Climate Change, Solomon S, Qin D, Manning M, Chen Z, Marquis M, Avery KB, Tignor M, Miller HL, (eds) Cambridge University Press, Cambridge, United Kingdom and New York, NY**
- IPCC Working Group II (2007) Climate change 2007: Impacts, adaptation and vulnerability. Contribution of Working Group II to the Fourth Assessment Report of the Intergovernmental Panel on Climate Change, Parry ML, Canziani OF, Palutikof LP, van der Linden PJ, Hanson CE (eds), Cambridge University Press, Cambridge, United Kingdom and New York, NY**
- Kairas P, Rybczk J, (2009) Sea Level Rise and eelgrass (*Zostera marina*) production: A spatially explicit relative elevation model for Padilla Bay, WA Science Direct website
- Lipp EK, Rose JB (1997) "The role of seafood in foodborne diseases in the United States of America" *Rev Sci Tech* 16:620-640, Pmid:9501377
- Littell, JS, Elsner MM, Whitely Binder LC, and Snover AK (eds) (2009) "The Washington Climate Change Impacts Assessment: Evaluating Washington's Future in a Changing Climate" Climate Impacts Group, University of Washington, Seattle, WA**
- Lobitz B, Beck L, Huq A, Wood B, Fuchs G, Faruque AS, Colwell R (2000) Climate and infectious disease: Use of remote sensing for detection of *Vibrio cholerae* by indirect measurement. *Proceedings of the National Academy of Science USA* 97:1438-1443, Pmid:10677480
- Mantua N, Hare S (2002) "The Pacific Decadal Oscillation" *Journal of Oceanography* 58:35-44.
- Mote P, Salathé Jr. E (2009) Future climate change in the Pacific Northwest. In: The Washington Climate Change Impacts Assessment: Evaluating Washington's future in a changing climate. Climate Impacts Group, University of Washington, Seattle, WA.**
- Mote P, Petersen A, Reeder S, Shipman H, Whitely Binder LC (2008) Sea level rise in the coastal waters of Washington State" Climate Impacts Group, University of Washington, Seattle, WA**
- NCAI (National Congress of American Indians) (2009) 2009 mid-year session, Resolution NGF-09-031. http://www.ncai.org/index.php?id=105&selectpro_resid=42. Accessed 7-9-09.
- National Research Council of the National Academies (US) (2008) The potential impacts of climate change on U.S transportation. Committee on Climate Change and U.S. Transportation. Transportation Research Board Special Report 290. Transportation Research Board and Division on Earth and Life Studies. Washington, D.C.

- Patz JA, Engelberg D, Last J (2000) "The effects of changing weather on public health." Annual Review of Public Health 21:271–307, Pmid:10884955
- Patz, JA. (2002) "A human disease indicator for the effects of recent global climate change" Proceedings of the National Academy of Sciences
- Rahmstorf, S. (2007) "A semi-empirical approach to projecting future sea-level rise" Science 315:368-370, Pmid:1135456**
- Snover AK, Whitely Binder LC, Lopez J, Willmott E, Kay J, Howell D, Simmonds J (2007) *Preparing for Climate Change: A Guidebook for Local, Regional, and State Governments. In association with and published by ICLEI, Oakland, CA.***
- Soo Hoo, WK, and Sumitani M (2005) Climate change will impact the Seattle Department of Transportation. Office of City Auditor, August 9, 2005
- Swinomish Indian Tribal Community (1991) A gathering of wisdoms: tribal mental health: a cultural perspective. Swinomish Tribal Mental Health Project, La Conner, WA
- Swinomish Indian Tribal Community (1996) The Swinomish Comprehensive Plan: the official land use comprehensive plan for the Swinomish Indian Reservation. La Conner, WA
- Tebaldi C, Hayhoe K, Arblaster JM, Meehl GA (2006) Going to the extremes. Climatic Change, 79, 185-211.
- Titus J (2008) Does sea level rise matter to transportation along the Atlantic coast? In: The potential impacts of climate change on U.S transportation. The National Research Council of the National Academies, Transportation Research Board and Department of Earth Science and Life Sciences, Washington, D.C.
- van Wijngaarden, W. A. and L. A. Vincent. 2004. Bulletin of the American Meteorological Society.
- Vizuite, Will, V. Junquera, V., McDonald-Buller, E., McGaughey, G., Yarwood, G. and Allen, D. 2002. Effects of temperature and land use on predictions of biogenic emissions in Eastern Texas. Atmospheric Environment. Vol. 36 No. 20. 3321-3337.
- Warren, LP (1993) Scour at bridges- What's it all about? U.S. Geological Survey and Massachusetts Highway Department. Open File Report 93-480
<http://ma.water.usgs.gov/publications/ofr/scour.htm> Accessed 9 April 2009
- Washington Department of Ecology (2006) Impacts of climate change on Washington's economy: A preliminary assessment of risks and opportunities. Publication No. 07-01-010.**
- White, M. L., R. S. Russo, Y. Shao, J. L. Ambrose, K. Haase, E.K. Frinak, R.K. Varner, O. W. Wingenter, H. Mao, R. Talbot and B. C. Sive. 2009. Are biogenic emissions a significant source of summertime atmospheric toluene in the rural Northeastern United States?. Atmospheric Chemistry and Physics, Volume 9, Issue 1, pp 81- 92.
- Willet, K. M., P.D. Jones, N.P., Gillette and P. W. Thome. 2008. Recent changes in surface humidity: development of HadCRUGH Dataset. Journal of Climate.
- Williams T, Hardison P (2006) Impacts on Indigenous peoples. In: Climate change and Pacific rim Indigenous nations. Northwest Indian Applied Research Institute (NIARI). The Evergreen State College, Olympia, WA
- Wooler S (2004) The changing climate: Impact on the Department for Transport. Department for Transport, London, United Kingdom
- Zeng, G. J.A. Pyle, and P. J. Young. 2008. Impact of climate change on tropospheric ozone and its global budgets. Atmos. Chem. Phys., Vol. 8, 369-387.
- Zervas C (2005) Response of extreme storm tide levels to long-term sea level change. National Oceanic Atmospheric Administration (NOAA) Center for Operational Oceanographic Products and Services.**